



Shire of Mount Marshall

non-potable strategic community water supplies plan

Department of Water and Environmental Regulation
Prime House, 8 Davidson Terrace
Joondalup Western Australia 6027
Locked Bag 10 Joondalup DC WA 6919

Phone: 08 6364 7000

Fax: 08 6364 7001

National Relay Service 13 36 77

dwer.wa.gov.au

© Government of Western Australia

January 2025

This work is copyright. You may download, display, print and reproduce this material in unaltered form only (retaining this notice) for your personal, non-commercial use or use within your organisation. Apart from any use as permitted under the *Copyright Act 1968*, all other rights are reserved. Requests and inquiries concerning reproduction and rights should be addressed to the Department of Water and Environmental Regulation.

Acknowledgements

Throughout the development of this Strategic Community Water Supply plan several people from the Rural Water Planning section in the Department of Water and Environment Regulation (the department) were involved:

Sherrie Anderson, Rosie Bell, Tracy Calvert, Mell Culhane, Elizabeth Tanner Sandy Turton-Parkinson and Renae Thorpe.

The department would also like to thank the Shire of Mount Marshall and the Water Corporation for their advice, support and assistance during the preparation of this plan.

For more information about this plan, contact Rural Water Planning on 1800 780 300.

Cover photograph: Beacon Rock Tank, Shire of Mount Marshall.

Disclaimer

This document has been published by the Department of Water and Environmental Regulation. Any representation, statement, opinion or advice expressed or implied in this publication is made in good faith and on the basis that the Department of Water and Environmental Regulation and its employees are not liable for any damage or loss whatsoever which may occur as a result of action taken or not taken, as the case may be in respect of any representation, statement, opinion or advice referred to herein. Professional advice should be obtained before applying the information contained in this document to particular circumstances.

This publication is available at our website www.dwer.wa.gov.au or for those with special needs it can be made available in alternative formats such as audio, large print, or Braille.

Contents

Summary	1
Introduction.....	2
Strategic community water supplies and agricultural area dams	3
Shire of Mount Marshall map.....	4
Strategic community water supply access.....	5
Overview of different fill points.....	5
Emergency contact.....	5
Farm bots	5
Shire of Mount Marshall SCWS sites.....	6
Description of community water supplies	7
Beacon Rock	7
Beacon Rock site description.....	8
North Cleary (Crimpy's Tank)	9
North Cleary site description.....	10
Marindo Rocks (Christie's Tank).....	11
Marindo Rocks site description	12
Glossary	13

Summary

Water supply planning is essential in rural areas and requires collaboration, involvement and participation from all stakeholders, including farmland communities, local government authorities (LGAs) and State Government agencies as part of an integrated approach to sustainable water supply for the future.

This plan provides information for the Shire and farmers on the location of strategic community water supplies (SCWS). It advises how to access non-potable water for emergency stock watering and firefighting purposes, including the facilities available at each site.

Introduction

Over the past 40 years, recurrent water supply problems have affected the dryland agricultural region. Emerging climate changes are likely to increase the occurrences of low rainfall years, resulting in water shortages and restrictions in rural communities.

As farmers face long-term water security challenges, they are encouraged to proactively develop and maintain on-farm water infrastructure to better prepare for dry periods.

Rural water planning recognises the importance of preparing for these events to increase the opportunities for delivering an assured water supply to farmland communities in the dryland agricultural areas of Western Australia (WA).

SCWS planning is one of the key roles of the Department of Water and Environmental Regulation's (the department's) rural water program. The aim is to safeguard dryland agricultural areas wherever possible against serious water deficiencies.

While landholder self-sufficiency must remain the primary objective, the rural water program recognises the importance of emergency off-farm water supplies to farming communities. It also builds on the SCWS network across the dryland agricultural area through the Community water supplies partnership (CWSP) program and the Agricultural areas (AA) dam works program.

Both programs establish and improve non-potable water supplies to ensure that water is available for emergency livestock watering, firefighting and other farm needs. The CWSP program aims to reduce reliance on potable scheme water supplies for non-potable needs, and to increase water availability for public amenities such as sportsgrounds.

This SCWS plan has been compiled for the Shire of Mount Marshall to provide a clear description of each of the SCWS in the Shire available for firefighting purposes, and to farmers and farming communities in times of emergency.

Strategic community water supplies and agricultural area dams

A network of SCWS has been developed across WA's dryland agricultural areas to provide an important source of non-potable water for farming and firefighting needs.

These supplies are for emergency use in times when low rainfall causes on-farm supplies to become depleted, and farmers need to travel to access water for livestock and essential farming purposes.

Vesting of the strategic dams and bores in each LGA varies, with some sites owned by government agencies (including the department), Water Corporation, the LGA itself, or by private entities where an agreement has been made to allow access.

It is important that these water supplies are carefully managed to ensure water is available during times of emergency.

The department keeps in regular contact with rural communities to monitor the condition of SCWS and identify and address any maintenance issues.

Each year, the department's rural water program undertakes works to maintain and upgrade sites vested with it, and sites in priority areas vulnerable to dry conditions.

AA dams have been developed since the early 1990s to provide water and support the growth of farming in the dryland agricultural area. There are about 480 of the original 681 AA dams that range from high value to no value in terms of their condition and serviceability.

SCWS is a subset of the AA dams that are reliable, in good to excellent repair and retain a high value. The department uses LGA maps to determine which sites are worth upgrading and to identify priority areas to develop new SCWS.

Figure 1 shows the location of the SCWS and AA dams in the Shire of Mount Marshall, with symbols indicating the capacity, vesting and values of each site.

Shire of Mount Marshall map

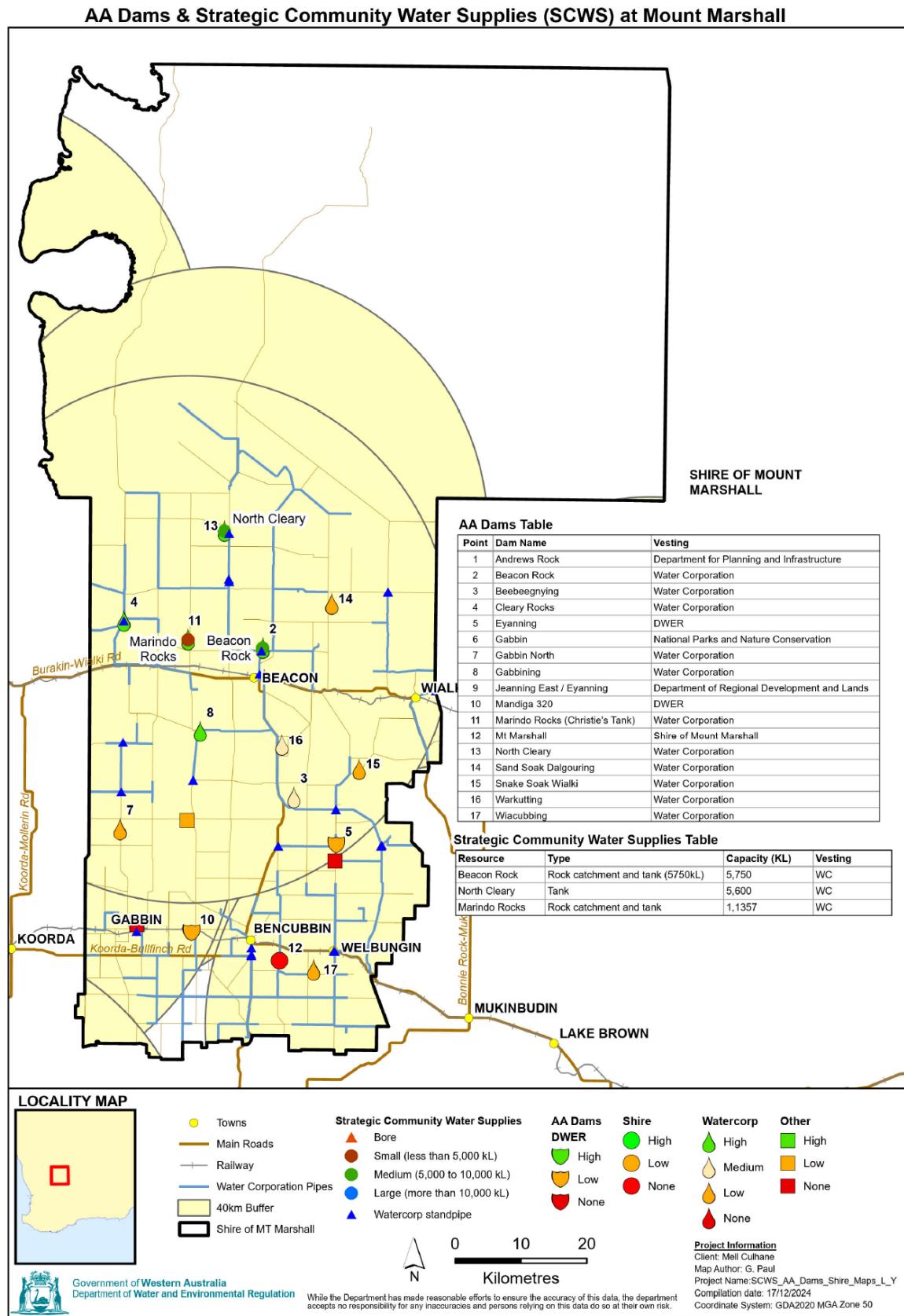


Figure 1 Location of SCWS (at 17 December 2024)

Strategic community water supply access

Overview of different fill points

Each SCWS will have a fill point to allow access to water supply for agricultural purposes. Each fill point will have a camlock fitting. Standard sizes of camlocks include 50 mm (2 inch), 80 mm (3 inch) fitting and in some cases a 100 mm (4 inch) connection is fitted for firefighting purposes. These camlock fittings will be available where there is a tank, standpipe, swipe card system or bore fill point. When accessing water directly from dams without tank storage, you will need to bring your own pump to extract water.

Emergency contact

The emergency access contact is the Shire of Mount Marshall Chief Executive Officer (CEO) on 0427 851 202.

Farm bots

Some tanks are fitted with farm bots, which regularly record the water level and feed this information into a website. You can access this website at app.farmbot.com.au (Login ID: **public.access** Password: **access1**) to view water tank levels for tanks fitted with farm bots.

Below are examples of different fill points you may come across in your LGA.



Tank standard camlock fitting



Farm bot positioned on top of tank



Swipe card standpipe system



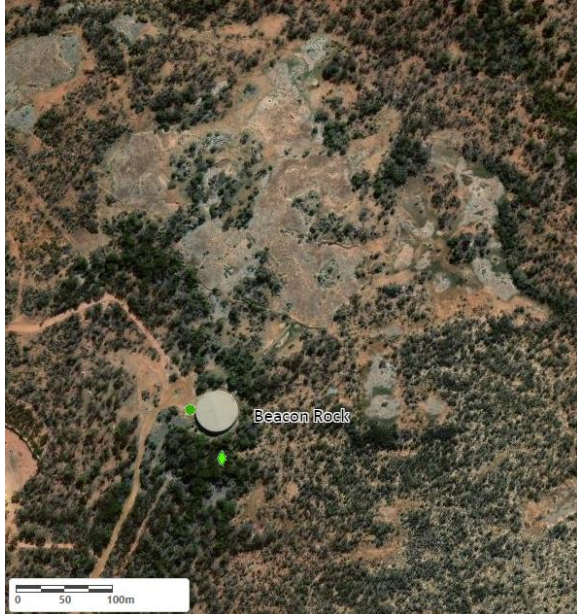
Tank, electric swipe card and pump for bore

Shire of Mount Marshall SCWS sites

Site name	Location
Beacon Rock	Beacon Rock Road, ~2 km west of Ingleton Road and ~5.8 km east of Bimbijy Road
North Cleary	Bimbijy Road, ~1.1 km south of Lancaster Road and 2.4 km north of Mitchell Road
Marindo Rocks	Marindo North Road, ~1.8 km north of Beacon Rock Road

Description of community water supplies

Beacon Rock



Aerial view of Beacon Rock



Location map



Beacon Rock tank (2013)



Beacon Rock catchment



Fill point (2013)



Sump (2013)

Beacon Rock site description

Vesting	Water Corporation
Purpose	Strategic community water supply for agricultural purposes, including emergency stock and firefighting water
Associated reserve	22456
AA dam #	491
Catchment type	Rock catchment
Catchment area (ha)	~ 9 ha

Location and coordinates

Location: Beacon Rock Road, ~2 km west of Ingleton Road and ~5.8 km east of Bimbij Road

Latitude	-30.41066849
Longitude	117.87675583
Eastings	584369
Northings	6635985

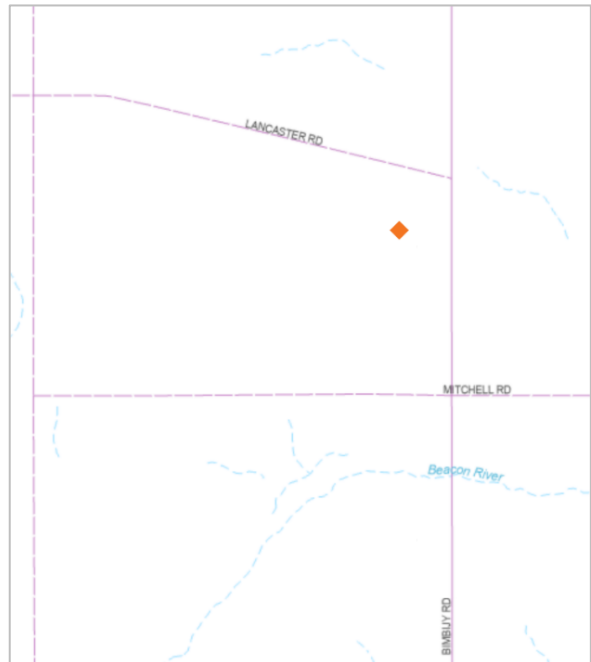
Water supply and access

Structure type	Rock catchment and tank
Tank capacity	5,750 kL
Camlock coupling sizes	3 inch (80 mm) and 2 inch (50 mm)
Standpipe Y/N	Yes
Swipe card Y/N	No
Pump Y/N	No
Heavy vehicle access	Yes
Turnaround area	Yes
Emergency access contact	Shire CEO 0427 851 202

North Cleary (Crimpy's Tank)



Aerial view of North Cleary



Location map



North Cleary tank (2024)



North Cleary catchment (2016)



Fill point (2024)

North Cleary site description

Vesting	Water Corporation
Purpose	Water
Associated reserve	25323
AA dam #	–
Catchment type	Rock catchment
Catchment area (ha)	~ 3.9 ha

Location and coordinates

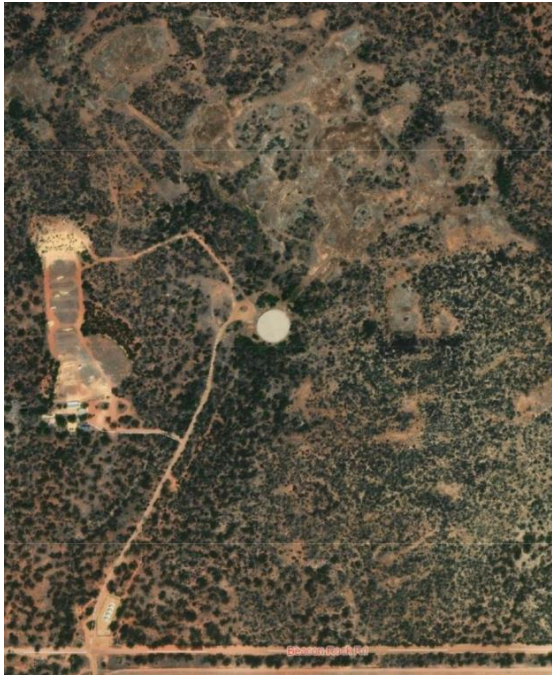
Location: Bimbijy Road, ~1.1 km south of Lancaster Road and 2.4 km north of Mitchell Road

Latitude	-30.2509902
Longitude	117.8149261
Eastings	578401
Northings	6653121

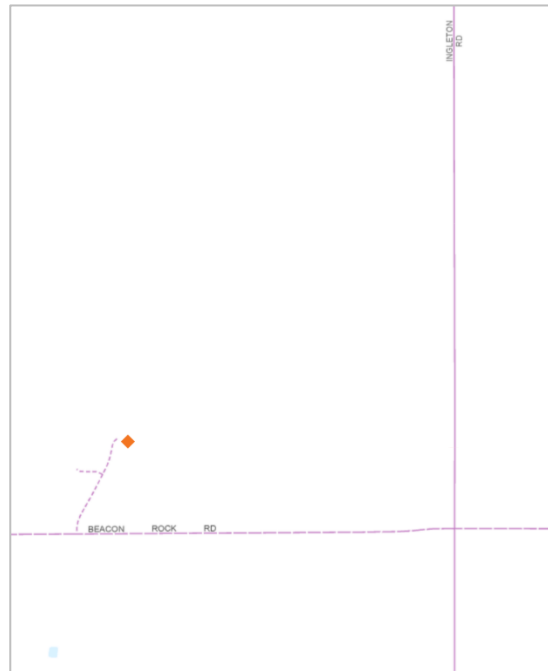
Water supply and access

Structure type	Rock catchment and tank
Tank capacity	5,600 kL (estimated)
Camlock coupling sizes	3 inch (80 mm) female, 2 inch (50 mm) female, 1.5 inch male
Standpipe Y/N	Yes
Swipe card Y/N	No
Pump Y/N	No
Heavy vehicle access	Yes
Turnaround area	Yes
Emergency access contact	Shire CEO 0427 851 202

Marindo Rocks (Christie's Tank)



Aerial view of Marindo Rocks



Location map



Marindo Rocks tank (2016)



Sump (2016)

Marindo Rocks site description

Vesting	Water Corporation
Purpose	Water
Associated reserve	21417
AA dam #	457
Catchment type	Rock catchment
Catchment area (ha)	~ 1.6 ha

Location and coordinates

Location: Beacon Rock Road, ~2 km west of Ingleton Road and ~5.8 km east of Bimbij Road

Latitude	-30.40010437
Longitude	117.7585668
Eastings	572868
Northings	6636634

Water supply and access

Structure type	Rock catchment and tank
Tank capacity	1,357 kL (estimated)
Camlock coupling sizes	2 inch (50 mm)
Standpipe Y/N	Yes
Swipe card Y/N	No
Pump Y/N	No
Heavy vehicle access	Yes
Turnaround area	Yes
Emergency access contact	Shire CEO 0427 851 202

Glossary

Camlock	A male hose coupling fixed for connection of a water hose. Camlocks can be attached to fill points such as tanks, or standpipes to allow access to water supply. Camlock sizes vary from site to site and generally include 50 mm (2 inch) and 80 mm (3 inch) as a standard. At some sites a 100 mm (4 inch) camlock has been included for firefighting purposes.
Catchment types	<p>Earth – land cleared, cambered and compacted to provide a catchment area for surface water.</p> <p>Bitumen – catchment lined with bitumen to allow capture of surface water.</p> <p>Rock catchment – rock that slopes, has containment walls to capture surface water to a storage source (e.g. a tank or a concrete dam).</p> <p>Bore – a drilled casing that accesses groundwater to provide a water supply.</p> <p>CBH – water is captured from a CBH grain silo storage facility and stored in a dam or tank.</p>
Farm bot	A device fitted to some tanks to regularly record the water level and feed this information into a website. You can access this website at app.farmbot.com.au (Login ID: public.access Password: access1) to see water tank levels for tanks fitted with farm bots.
Fill point	Location where a water supply can be accessed from using camlock fittings either via standpipe, swipe card system, tank or bore.
Non-potable	Water not suitable for human consumption.
Solar pump	A pump powered via solar energy that pumps water from one location to another (e.g. from dam to dam or from dam to tank).
Staff gauges	A marker measuring tool positioned at surveyed depths in a dam to indicate water levels.
Standpipe	A pipe overhead, on a plinth or raised off the ground to provide a fill point for water supply.
Swipe card	A metered fill point requiring a card to be swiped to start pumping system. Contact the LGA for further information.
Vesting	Person or governing agency with responsibility for managing land.



Department of Water and Environmental Regulation
Prime House
8 Davidson Terrace
Joondalup Western Australia 6027

Locked Bag 10, Joondalup DC WA 6919

Phone: 08 6364 7000
Fax: 08 6364 7001
National Relay Service 13 36 77
wa.gov.au/dwer

24250239