

The WA Roadmap

**Our plan to deliver recommendations
from the Disability Royal Commission**

Easy Read version



A warning about this document



In this document we talk about some things that might:

- upset you
- make you feel worried.



You can talk to someone you trust if you:

- need support to read this document
- don't feel comfortable to read this document.

How to use this document



We are the Government of Western Australia.

We wrote this document.



We explain the words in **bold**.

There is also a list of these words on page **31**.



This is an Easy Read summary
of another document.

It only includes the most important ideas.



You can find the other document on our website.

[www.wa.gov.au/government/royal-
commission-violence-abuse-neglect-and-
exploitation-of-people-disability](http://www.wa.gov.au/government/royal-commission-violence-abuse-neglect-and-exploitation-of-people-disability)



This is a long document.

You don't need to read it all at once.

You can take your time.

What's in this document?

About the Disability Royal Commission	5
About the roadmap	7
Our principles and actions	9
Recommendations we need to make a decision about	15
Word list	31
Contact us	36
Support to contact us	37

About the Disability Royal Commission



The **Disability Royal Commission** looked into problems that Australians with disability experienced.



This included people with disability who live in Western Australia.



It helped us find out what:

- went wrong
- we need to improve.



The Disability Royal Commission shared ideas about what we can change.

These ideas are called **recommendations**.



These recommendations will help us make Western Australia safer for people with disability.

These recommendations will also help us make Western Australia more:



- **inclusive** – when something is inclusive, everyone can take part and feels like they belong



- **accessible** – when something is accessible, it's easy to find and use services, and move around.

About the roadmap



We created a plan to deliver **100** recommendations from the Disability Royal Commission.

We call this plan our roadmap.



Our roadmap explains our:

- actions
- **principles.**



Our principles are ideas we:

- believe in
- think are important.



Our roadmap also explains how we will make a decision about **32** more recommendations.

We still need to decide if we:



- agree with these recommendations

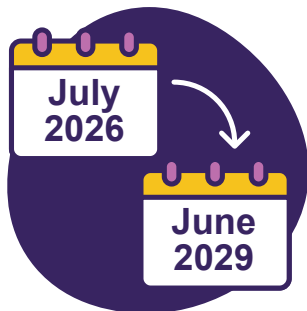


- mostly agree with these recommendations.



We will use this roadmap for actions we plan to finish by June 2026.

We will create new roadmaps for actions we plan to finish:



- between July 2026 to June 2029



- after June 2029.

Our principles and actions



Our roadmap has **5** principles to support how we will deliver the recommendations.



We explain these principles and our actions to support them on the following pages.

1. Connect with people with disability, families and carers



This principle is about making sure we hear ideas from:

- people with disability
- families
- carers.



We will find out the best way for them to share their ideas with us for different recommendations.



We also created a new group called the Disability Lived Experience Advisory Panel.



The group will include:

- people with disability
- carers.



The group will share their ideas and advice with us about different recommendations.

2. Work with the disability sector



This principle is about working with the **disability sector** to deliver the recommendations.



The disability sector includes different services and organisations that:

- support people with disability
- speak up for people with disability.



We will ask certain organisations for their ideas about different recommendations.



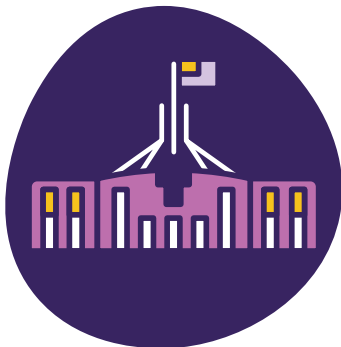
This will make sure we get the best advice for each recommendation.

3. Work with governments



This principle is about working with governments to deliver the recommendations.

This includes working with:



- the Australian Government



- state and territory governments.

4. Make sure our roadmap is working well



This principle is about how we check that our actions to deliver the recommendations are working well.

This includes checking to see what:



- is working well



- could work better.

5. Be clear and honest about what we are doing



This principle is about how we will be clear and honest with people about our work to deliver the recommendations.

This includes:



- sharing clear information with the community



- explaining how we will use ideas from people with disability, families and carers.

Recommendations we need to make a decision about



There are **32** recommendations we need to make a decision about.

We need to decide if we:



- agree with these recommendations



- mostly agree with these recommendations.



We will tell people how we are going with our decisions by June 2025.



We explain our actions to help us make a decision on the following pages.

Supported decision-making



Supported decision-making is when you help someone make important decisions about their life.



We still need to make a decision about **12** recommendations for supported decision-making.



We will check the law in Western Australia about supported decision-making.



We will write a report that explains how we can change the law to improve supported decision making for people with disability.



We will finish this report before the end of 2025.

People with disability in detention settings



Detention settings are places where people are kept when they have broken the law.

For example, in a prison.



We still need to make a decision about **5** recommendations for the **rights** of people with disability in detention settings.



Rights are rules about how everyone must treat you:

- fairly
- equally.



There are rules that detention settings must follow to:

- protect people's rights
- keep people safe from harm.



We will make sure these rules also protect people with disability and keep them safe from harm.

End segregated education



Segregated means you keep people apart because of their differences.

This includes if you separate people with disability from people without disability.



We still need to make a decision about **2** recommendations to end segregated education.



We will learn how we can make education more inclusive for people with disability.

We will learn from:



- students and parents



- teachers and other staff



- groups that speak up for teachers.



We will check the law in Western Australia about education.



We will write a report that explains how we can change the law to make education more inclusive for people with disability.



We will finish this report by the end of 2024.

End segregated employment



Employment means you:

- have a job
- go to work
- get paid



We still need to make a decision about **one** recommendation to end segregated employment.



We will work with other governments to help us make a decision about this recommendation.



We will also find out what people think about a plan to end segregated employment.

This plan is called the National Inclusive Employment Roadmap.



In 2025, we will talk to:

- workers with disability
- families
- disability employment providers
- groups that speak up for workers with disability.

Protect people with disability



We still need to make a decision about **4** recommendations for protecting people with disability.



We will also work with governments to decide the best ways to protect people with disability.

This includes checking the laws that protect:



- the rights of people with disability



- people with disability from **family and domestic violence**.

Family and domestic violence is when someone close to you hurts you, such as:



- your partner, like your boyfriend or girlfriend
- a member of your family
- someone who takes care of you
- someone you live with.



We will work with governments to find out how our laws can better protect people with disability.



This includes how we can update the law to better explain **coercive control**.



Coercive control is when someone tries to control your life.

They might trick you or make you feel scared.

Make housing safer



We still need to make a decision about **2** recommendations for making housing safer.



We will keep working with governments to find out how we can improve housing.



We will also look at how we can improve the law to make housing safer for people with disability.



We will talk to people with disability who rent their homes.



We will also talk to other groups like organisations that support housing rights.

End group homes



Group homes are places where people with disability:

- live together
- get support.



We still need to make a decision about **2** recommendations to end group homes.



We will work with governments and the disability sector to:

- help us make a decision
- find out how much it costs to run group homes.



In 2025, we will talk to:

- people with disability in group homes
- families
- carers.



We will use what we find out to write our new Disability Housing Framework.

This framework will explain what we found out about:



- the housing needs of people with disability



- how people are getting accessible housing



- how we can give people with disability more choice in their housing.

The NDIS principles



We still need to make a decision about **one** recommendation for the National Disability Insurance Scheme (NDIS) principles.



We will work with governments to find out how the NDIS can work better with the **justice system**.



The justice system makes sure everyone is treated fairly and follows the law.

The justice system includes:

- prisons
- courts
- police.



We will also check the supports people with disability can use when they are in the justice system.

Check the deaths of people with disability



We still need to make a decision about **2** recommendations to check the deaths of people with disability.

We might need to check the deaths of people with disability to find out:



- if something could have been done to stop the death



- what we could do in the future to keep people safe.



We will work with governments to decide what we should do about checking the deaths of people with disability.

Word list

This list explains what the **bold** words in this document mean.



Accessible

When something is accessible, it's easy to:

- find and use services
- move around.



Coercive control

Coercive control is when someone tries to control your life.

They might trick you or make you feel scared.



Detention settings

Detention settings are places where people are kept when they have broken the law.



Disability Royal Commission

The Disability Royal Commission looked into problems that Australians with disability experienced.



Disability sector

The disability sector includes different services and organisations that:

- support people with disability
- speak up for people with disability.



Employment

Employment means you:

- have a job
- go to work
- get paid.

Family and domestic violence



Family and domestic violence is when someone close to you hurts you, such as:

- your partner, like your boyfriend or girlfriend
- a member of your family
- someone who takes care of you
- someone you live with.



Group homes

Group homes are places where people with disability:

- live together
- get support.



Inclusive

When something is inclusive, everyone:

- can take part
- feels like they belong.



Justice system

The justice system makes sure everyone is treated fairly and follows the law.

The justice system includes:

- prisons
- courts
- police.



Principles

Our principles are ideas we:

- believe in
- think are important.



Recommendations

Recommendations are ideas about what we can change.



Rights

Rights are rules about how everyone must treat you:

- fairly
- equally.



Segregated

Segregated means you keep people apart because of their differences.



Supported decision-making

Supported decision-making is when you help someone make important decisions about their life.

Contact us



You can call us.

1800 176 888



You can send us an email.

enquiries@communities.wa.gov.au



You can write to us.

**Locked Bag 5000
Fremantle WA 6959**



You can visit our website.

www.communities.wa.gov.au

Support to contact us

National Relay Service



You can call the National Relay Service if you:

- are deaf or hard of hearing
- find it hard to speak using the phone.



TTY (Type and Listen)

1800 555 677



Speak and listen

1300 555 727



You can ask them to connect you to our phone number.

1800 176 888

Translating and Interpreting Service



If you need something in a language other than English, you can call the Translating and Interpreting Service.

131 450



You can ask them to connect you to our phone number.

1800 176 888



You can also ask for their support to send us an email.

enquiries@communities.wa.gov.au



The Information Access Group created this Easy Read document using stock photography and custom images. The images may not be reused without permission. For any enquiries about the images, please visit **www.informationaccessgroup.com**. Quote job number 6081.