



A Western Australia **for Everyone** State Disability Strategy



Annual Report (2021)

2020 2030

On 3 December 2020, A Western Australia for Everyone: State Disability Strategy 2020-2030 (the Strategy) was launched.

This Annual Report provides an overview of achievements during the Strategy's first year.

Progress reports on activities due to commence within 1-2 years of the launch of the Strategy are provided.

Highlights from activities which are currently underway and/or will be continuously undertaken have also been included.

Further annual reports will be prepared on the progress of the Strategy and outcomes delivered.

Completed Actions

Department of Communities

Positive Behaviour Support Practitioners

Four rounds of training to increase the number of Behaviour Support Practitioners have been completed to date, with a fifth round due to commence in March 2022 for completion by June 2022.

To date:



186 places were offered
(179 trainees completed the program)



49 trainees were regionally/
remotely based with an additional **31**
providing services in regional areas.

The delivery of this training forms part of the National Action Plan for developing the availability and access to the NDIS specialist behaviour support market.

“This training really pulls together the important parts of the process, and legislative expectations and ties them with person centred values based on the latest behavioural science knowledge.”

– Training participant.

Main Roads WA, Perth Children's Hospital Foundation, City of Perth

Kids Bridge – connecting hospital with nature

On 4 August 2021, Koolangka Bridge, meaning 'children' in Noongar, officially opened, linking Perth Children's Hospital to Kings Park with access and inclusion an integral part of the bridge design.

WA Police, Department of Communities

Safe services for all



Launched in WA in February 2021,
16,062 NDIS Worker Screening Checks were undertaken for 2021/22.

WA Police

Autism Alert Card



WA Police partnered with Autism WA to support the development of a state-wide 'Autism Alert Card' (Card) launched on 3 December 2020.

A total of 444 Cards have been distributed to date with a further 57 applications in progress. On average, five applications are received per week.

Pillar Participate and contribute

Actions
23

Short
3

Medium
3

Long
0

Ongoing
17

All State Government agencies

Priority Action

Employment participation in the WA Public Sector

Implement the Public Sector Commission's People with Disability: Action Plan to Improve WA Public Sector Employment Outcomes 2020-2025. Increase the representation of people with disability employed in the public sector to 5% by the end of 2025.

- Within the public sector overall, representation of people with disability **1.5%**
 - Workforce disability and workforce data information is available in the Public Sector Commissioner's report on the State of the WA Government Sector Workforce 2020–21 and related [statistical bulletin](#).

Highlighted initiatives include:

- Several agencies have participated in the Building the Talent Pool project, through National Disability Services WA in partnership with the WA Public Sector Commission.
- The Public Sector Commission has engaged with a range of Disability Employment Service providers to raise awareness and understanding of public sector recruitment processes, as well as better understanding services provided by Disability Employment Service providers.
- Main Roads Procurement Plans and 'Request Approval to Call Tenders Goods and Services' documents include a recommendation that buyers consider purchasing from an approved WA Disability Enterprise.
- The Department of Transport is working closely with the National Disability Recruitment Coordinator to improve access, inclusion, and opportunities for current and future employees with disability, including mental health conditions.
- The Department of Training and Workforce Development continue to apply section 66R of the Equal Opportunity Act to all job advertising to encourage applications from people with disability.
- The Department of Education has held discussions with the Autism Association of Western Australia to explore work placement opportunities for people with autism.
- WA Police contracts to organisations supporting people with disability. Contracted services include gardening, painting and cleaning.

Pillar Living well

Actions
26

Short
10

Medium
0

Long
1

Ongoing
15

Department of Communities

Priority Action

9.1 Liveable Design Housing

Increase the availability of Liveable Design housing to provide more housing options for people with disability. A target of 40% of all new builds in Western Australia to Liveable Design standards by 2030 will provide more housing options and choices for people with disability.

The WA Housing Strategy 2020-2030** contains a target that seeks to "catalyse 40 per cent of new homes built to liveable design standards by 2030." The Department of Communities constructs 100 per cent of public housing to a minimum silver standard where practicable and previously sought to build a minimum of 20 per cent of all residential construction to silver standard or above. Several builders in WA are incorporating aspects of Liveable Design as standard specifications to their builds.

**WA Housing Strategy 2020-2030 Connecting 150,000 WA households to a home by 2030.

Department of Communities

Priority Action

9.2 Specialist Disability Accommodation (SDA)

Increase the availability of suitable housing options for people with complex disability by developing the SDA market in Western Australia. The SDA program will enrol existing State-owned group homes and identify people suitable and in priority need of SDA, such as young people with disability who are residing in nursing and aged care facilities.

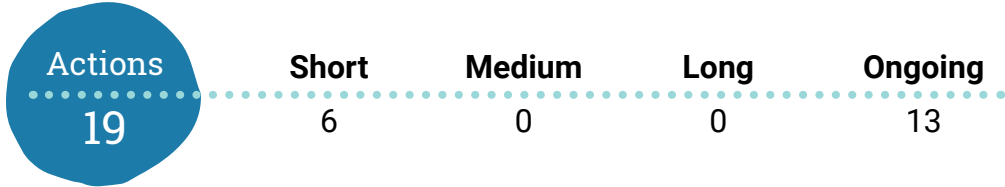
The SDA market in WA continues to develop and will provide homes for people assessed as SDA eligible by the National Disability Insurance Scheme (NDIS). Following consultation with the sector throughout 2021 and in the context of current market conditions, enrolling State-owned group homes is under consideration.



Number of SDA dwellings and places in WA as at August 2021:
248 dwellings
and
384 places

Pillar

Inclusive communities



Department of Communities

Priority Action

Legislated renewal of the Disability Services Act 1993

Undertake the legislated renewal of the Disability Services Act 1993 to renew and refresh the approach to strengthening outcomes from mandated access and inclusion planning.

A consultation process for the development of new disability legislation will be undertaken in 2022, which will include a review of the current Disability Access and Inclusion Plan approach to inform the drafting of access and inclusion provisions in the new legislation.

Department of the Premier and Cabinet, Office of Digital Government

Priority Action

Disability and digital inclusion

Develop a blueprint for digital inclusion for all Western Australians, including people with disability.

In November 2021, the Department of the Premier and Cabinet launched the Digital Inclusion in WA What we Heard Report. The Report highlights key findings from the Government's consultation with the community on a draft Digital Inclusion Blueprint for all Western Australians, including people with disability. Findings from the What we Heard Report will inform a final Blueprint and a program of initiatives to make Western Australia a more digitally inclusive State.

Pillar

Rights and equity



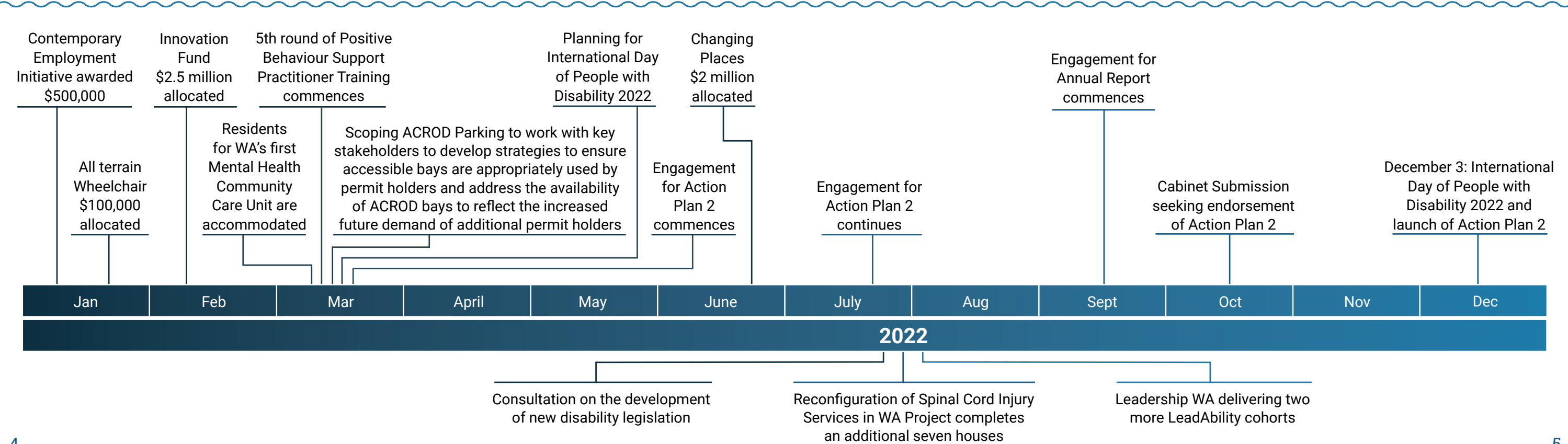
Department of Communities

Priority Action

12.1 All together for one

Identify legislative reform required to improve outcomes for people with disability, including but not limited to the Disability Services Act 1993, and provide advice to government to better support the rights of people with disability.

A consultation process for the development of new disability legislation will be undertaken in 2022, which will include identifying and addressing approaches to improve rights and equity outcomes for people with disability to inform provisions in the new legislation.





Aboriginal Community Controlled Organisation Capability Building Grants Program was established in partnership with the Department of Finance which totalled \$850,000. Nineteen grants of up to \$50,000 each were provided to assist Aboriginal Community Controlled Organisations to build their capability in areas of operational and cultural governance, and organisational and workforce development. The Aboriginal Community Controlled Organisation Capacity Building Grants complement the work of the WA State Government funded Sector Transition Fund, particularly in building their capacity and capability to operate in the NDIS environment and to continue to provide quality services to people with disability.



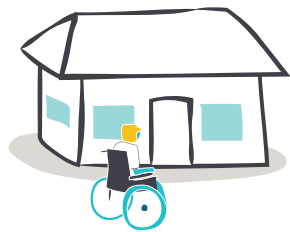
Residents for WA's first Mental Health Community Care Unit (the Unit) are expected in March 2022. The Unit is a community based residential service for adults with significant mental health issues and provides residents a highly supported environment with 24/7 psychosocial, clinical, and peer support.



Specialised tours offered at the WA Maritime and Shipwrecks Museums for visitors who are blind or vision impaired. Participants have the chance to touch and examine specially selected objects from the Museum's collections and displays.

The WA Museum Boola Bardip actively partnered with organisations that provide services to people with disability to continuously improve visitor experience, these include:

- Rocky Bay Studio artists delivered Ocean Meet Lands.
- Autism Association of WA produced printable visual stories and visual supports for children and adults with Autism for the WA Museum Boola Bardip.
- VisAbility has produced a braille site map and a visitor guide for vision impaired visitors and the Epoch café, situated in the Museum, also provides braille menus.
- Disability in the Arts, Disadvantage in the Arts, Australia (DADAA) provided in person disability access and inclusion training to all front of house staff at the WA Maritime Museum and WA Shipwrecks Museum.
- Spectrum Space (formerly Autism West) delivered external ground tours of the HMAS Ovens submarine at the WA Maritime Museum for visitors with disability.
- Eastern Goldfields Education Support Centre in partnership with The Museum of the Goldfields deliver tailored tours and education programs that are inclusive and tailored to the individual needs of the Support Centre students.



Led by North Metropolitan Health Service, the Reconfiguration of Spinal Cord Injury Services in WA Project links people with newly acquired spinal cord injuries, who are eligible for State Housing, to accessible housing upon discharge from hospital. So far, five houses have been completed and allocated by the Department of Communities to people with disability. A further seven houses are currently under construction by the Department of Communities and programmed for completion in 2022.



During 2022, the Department of Justice will continue to progress reforms to the Criminal Law (Mentally Impaired Accused) Act 1996 (WA) to improve justice outcomes for mentally impaired accused people. Amendments arising from the 2015 Statutory Review of the Guardianship and Administration Act 1990 (WA) aimed at strengthening safeguards for adults with a decision-making disability and improving the overall operation of the Act, will also continue to be progressed. A Victims of Crime Strategy is currently under development by Office of the Commissioner for Victims of Crime to investigate opportunities to better identify and support victims of crime who have disability.



DADAA
receives
\$140,000
per annum
until 2023

The Department of Local Government, Sport and Cultural Industries, Culture and the Arts (CATA) Division continues to fund peak arts and disability organisation DADAA through its Arts Organisation Investment Program. CATA's Regional Arts and Cultural Investment Program, Community Participation and Inclusion Program has funded three projects supporting artists with disability in the regions.

CATA promotes accessible arts and cultural activities, events, online resources and funding programs. Arts mentorships, residencies and artist hubs provide artists with disability the opportunities to develop and showcase new work and engage their peers in the arts and cultural sector.

Choose Art, an accessible arts activities and online resource for people with disability to find and participate in arts programs, opportunities, and events in their local area and beyond.



As We Are, empowering people with an intellectual disability, facilitated an 18 months mentorship for two artists with disability culminating in an exhibition for "Deep Winter", at PS Art Space during the 10 nights at the Port Festival in Fremantle 2021 and article in seesaw WA arts magazine.



In 2021/22 financial year, 23,160 ACROD permits were issued including 241 to people who are legally blind.

Disability Royal Commission

In 2021, the Department of Communities responded to matters arising during Public Hearing 8 and Public Hearing 16, of the Disability Royal Commission into Violence, Abuse, Neglect and Exploitation of People with Disability with regard to disability awareness training for child protection staff in Western Australia.

In response to this, the Whole-Of-Life Planning Training was commissioned to increase the skills of Team Leaders and Senior Practice Leaders within Communities child protection teams to support vulnerable young people with disability in care, through to adulthood. The intended outcome is increased positive outcomes for this group of young people when they transition from care at 18 years of age.



During 2021, the Department of Education established a number of data sets in response to the Royal Commission into Violence, Abuse, Neglect and Exploitation of People with Disability. These broad ranging data sets are supporting the Department of Education to review progress in key areas and to identify areas for improvement. Schools use the Reporting to Parents, Special Educational Needs platform to plan, monitor and report the achievement of students with disability who require a differentiated or alternative curriculum. In addition to the Western Australian Curriculum, many schools use the Abilities Based Learning Education, Western Australia to assess students with disability and collect data to effectively plan for students who require extensive or substantial adjustments.

The WA Government supports the work of the Disability Royal Commission, by providing people in prisons, youth detention facilities and forensic mental health facilities with an opportunity to disclose their experiences. This is being facilitated through the distribution of targeted information that is accessible

to people with disability. The Department of Communities has made information accessible within its Bennett Brook Disability Justice Centre, sharing posters, explaining processes and allowing residents the ability to phone the Disability Royal Commission to make a submission.