



Yandeyarra Layout Plan 1 - Living Area Amendment 5

Land Administration

| | |
|--|--|
| | cadastre |
| | lodged cadastre |
| | private lease |
| | recommended settlement zone |
| | settlement zone |
| | settlement layout (SL) lot & SL-lot number |

63

Exclusion Boundary (see [Aboriginal Settlements Guideline 3](#))

| | |
|--|----------------------|
| | chlorine gas storage |
| | fuel storage |
| | industry |
| | no-go area |
| | power station |
| | utility |

Land Use (see [Aboriginal Settlements Guideline 1](#))

| | | |
|--|---------------------------------------|--|
| | road reserve | road, essential service distribution network |
| | residential | house, residential quarters |
| | visitor camping | camping ground, traditional law and culture |
| | community | child care premises, civic use, corrective institution, educational establishment, health care centre, worship building |
| | open space | agriculture - extensive, essential service distribution network, traditional law and culture |
| | rural | rural pursuit, agriculture - extensive, animal husbandry - intensive, agriculture - intensive, essential service distribution network |
| | recreation | recreation, essential service distribution network |
| | pedestrian access way | essential service distribution network, pedestrian access way |
| | drinking water source protection area | any use permitted under the Drinking Water Source Protection Plan |
| | waterway | agriculture - extensive, agriculture - intensive, traditional law and culture |
| | commercial | art centre, caravan park, motel, office, service station, shop, tourism accommodation |
| | industrial | fuel depot, industry, motor vehicle repair, storage, vehicle wrecking |
| | public utility | electricity supply, essential service distribution network, drinking water supply, wastewater disposal, telecommunications, rubbish disposal |

0 25 50 75 100 125 metres
projection : MGA zone 50, GDA 94

This Layout Plan does not constitute development approval. It is the responsibility of the developer to ensure that all relevant consents, approvals, licences and clearances are in place prior to commencing physical works on the site. Organisations responsible for such matters may include land owner, local government, incorporated community council, native title representative body, native title prescribed body corporate, Aboriginal Cultural Materials Committee, Environmental Protection Authority, state and federal government departments, and other relevant regulatory authorities. Go to the [PlanWA interactive planning map](#) to view Layout Plans with other spatial layers.

Base information and aerial imagery supplied by the Western Australian Land Information Authority SLIP 1096-2018-1. Cadastre date 12/06/2019. May 2019 aerial image. Drinking water source protection area derived from the Yandeyarra (Mugarinye) Drinking Water Source Protection Plan October 2010, commissioned by the Dept. of Communities (Housing). Settlement layout lots are not derived from calculated dimensions.

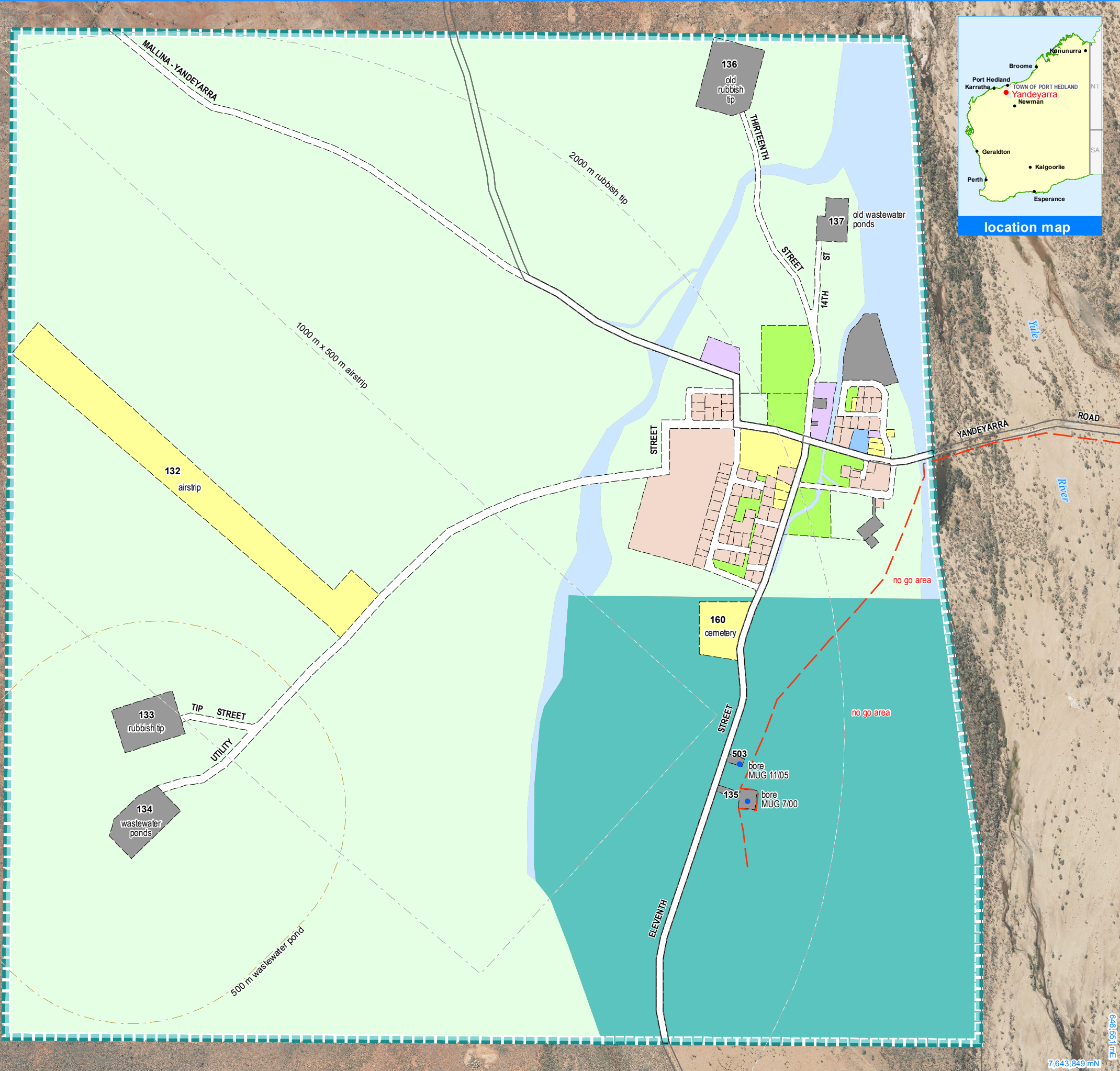
Map document : Yandeyarra LP1 Amd5 - Living Area v2.mxd
Produced by Land Use Planning, Department of Planning, Lands & Heritage on behalf of the Western Australian Planning Commission.
© Western Australian Planning Commission 2019



[Yandeyarra Layout Plan 1 Background Report](#)

| Layout Plan 1 endorsement | |
|---------------------------|---------------|
| Community | 6 July 2001 |
| Local Government | 16 July 2001 |
| Traditional Owners | - |
| WAPC | 1 August 2001 |
| Amendment 5 endorsement | |
| WAPC | 15 March 2018 |

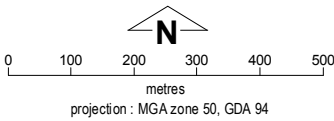
7,647,101 mN
63,2749 mE



Yandeyarra Layout Plan 1 - Context Amendment 5

- Features**
- production bore
- Land Administration**
- cadastre
 - lodged cadastre
 - private lease
 - recommended settlement zone
 - settlement zone
 - settlement layout (SL) lot & SL-lot number
- Exclusion Boundary**
- no-go area
 - utility
 - wastewater

| | |
|---------------------------------------|--|
| road reserve | road, essential service distribution network |
| residential | house, residential quarters |
| visitor camping | camping ground, traditional law and culture |
| community | child care premises, civic use, corrective institution, educational establishment, health care centre, worship building |
| open space | agriculture - extensive, essential service distribution network, traditional law and culture |
| rural | rural pursuit, agriculture - extensive, animal husbandry - intensive, agriculture - intensive, essential service distribution network |
| recreation | recreation, essential service distribution network |
| pedestrian access way | essential service distribution network, pedestrian access way |
| drinking water source protection area | any use permitted under the Drinking Water Source Protection Plan |
| waterway | agriculture - extensive, agriculture - intensive, traditional law and culture |
| commercial | art centre, caravan park, motel, office, service station, shop, tourism accommodation |
| industrial | fuel depot, industry, motor vehicle repair, storage, vehicle wrecking |
| public utility | electricity supply, essential service distribution network, drinking water supply, wastewater disposal, telecommunications, rubbish disposal |



This Layout Plan does not constitute development approval. It is the responsibility of the developer to ensure that all relevant consents, approvals, licences and clearances are in place prior to commencing physical works on the site. Organisations responsible for such matters may include land owner, local government, incorporated community council, native title representative body, native title prescribed body corporate, Aboriginal Cultural Materials Committee, Environmental Protection Authority, state and federal government departments, and other relevant regulatory authorities. Go to the [PlanWA interactive planning map](#) to view Layout Plans with other spatial layers.

Base information and aerial imagery supplied by the Western Australian Land Information Authority SLIP 1096-2018-1. Cadastre date 12/06/2019. May 2019 aerial image. Drinking water source protection area derived from the Yandeyarra (Mugarinye) Drinking Water Source Protection Plan October 2010, commissioned by the Dept. of Communities (Housing). Settlement layout lots are not derived from calculated dimensions.

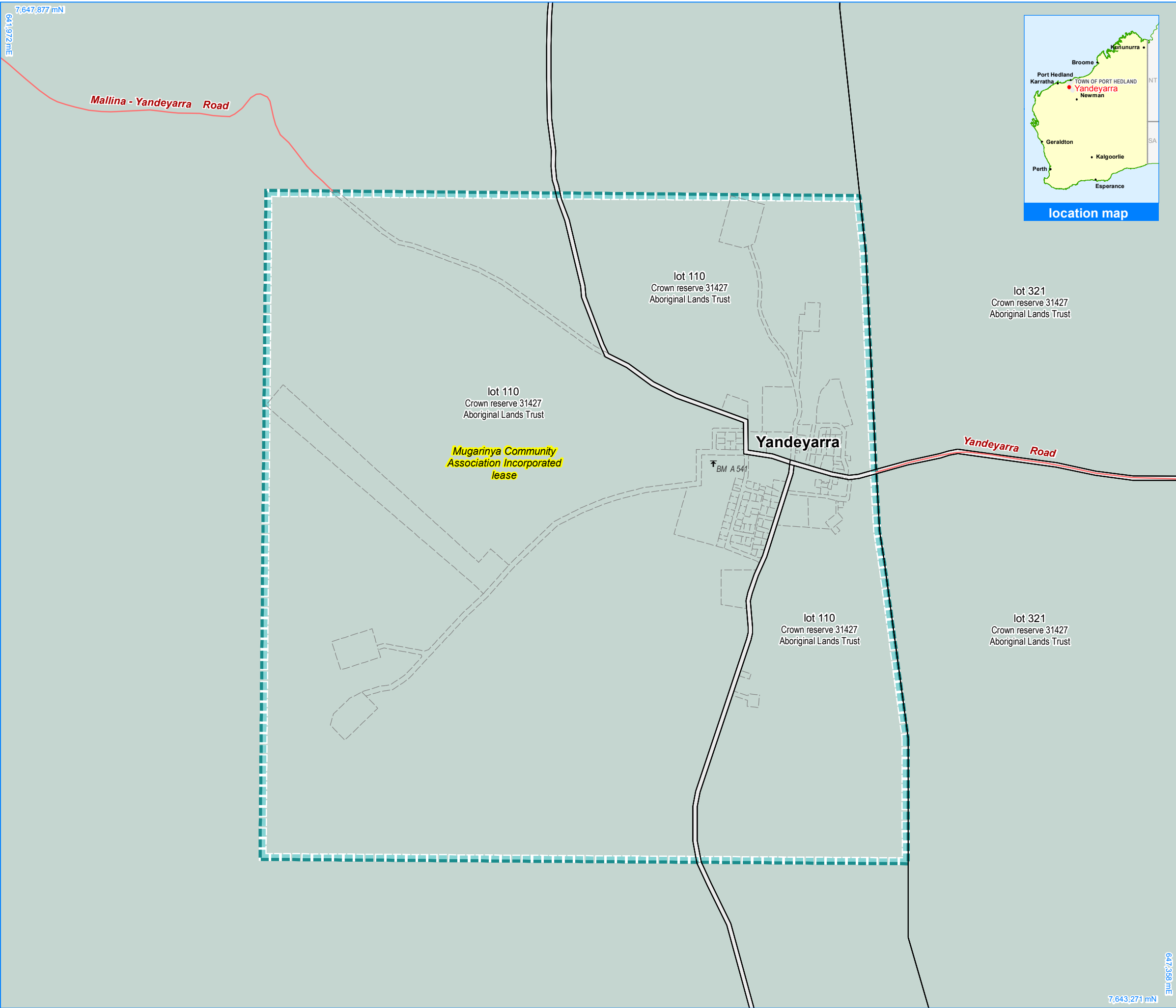
Map document : Yandeyarra LP1 Amd5 - Context v2.mxd
Produced by Land Use Planning, Department of Planning, Lands & Heritage on behalf of the Western Australian Planning Commission.
© Western Australian Planning Commission 2019



| Layout Plan 1 endorsement | |
|---------------------------|---------------|
| Community | 6 July 2001 |
| Local Government | 16 July 2001 |
| Traditional Owners | - |
| WAPC | 1 August 2001 |
| Amendment 5 endorsement | |
| WAPC | 15 March 2018 |

7,643,649 mN

64,651 mE



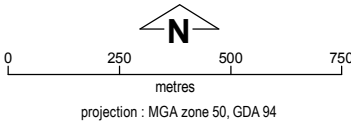
Yandeyarra Layout Plan 1 - Land Tenure Amendment 5

| Land Tenure | |
|--|--------------------------|
| crown reserve | |
| crown reserve | - Aboriginal Lands Trust |
| Department of Biodiversity, Conservation & Attractions managed | |
| freehold | |
| leasehold | |
| other | |
| pastoral lease | |
| pastoral lease | - Aboriginal Lands Trust |
| unallocated crown land | |
| water reserve | |

| Geodetic Survey Marks | |
|-----------------------|-----------------------------|
| ⊕ | bench mark & name |
| ⊙ | standard survey mark & name |

| Land Administration | |
|---------------------|-----------------------------|
| | cadastre |
| | lodged cadastre |
| | private lease |
| | recommended settlement zone |
| | settlement zone |
| | settlement layout (SL) lot |

| Roads | |
|-------|------------------|
| | national highway |
| | state highway |
| | major road |
| | minor road |
| | track |



This Layout Plan does not constitute development approval. It is the responsibility of the developer to ensure that all relevant consents, approvals, licences and clearances are in place prior to commencing physical works on the site. Organisations responsible for such matters may include land owner, local government, incorporated community council, native title representative body, native title prescribed body corporate, Aboriginal Cultural Materials Committee, Environmental Protection Authority, state and federal government departments, and other relevant regulatory authorities. Go to the [PlanWA interactive planning map](#) to view Layout Plans with other spatial layers.

Base information supplied by the Western Australian Land Information Authority SLIP 1096-2018-1. Cadastre date 12/06/2019.
Settlement layout lots are not derived from calculated dimensions.
Map document : Yandeyarra LP1 Amd5 - Land Tenure v2.mxd
Produced by Land Use Planning, Department of Planning, Lands & Heritage on behalf of the Western Australian Planning Commission.
© Western Australian Planning Commission 2019



| Layout Plan 1 endorsement | |
|---------------------------|---------------|
| Community | 6 July 2001 |
| Local Government | 16 July 2001 |
| Traditional Owners | - |
| WAPC | 1 August 2001 |
| Amendment 5 endorsement | |
| WAPC | 15 March 2018 |