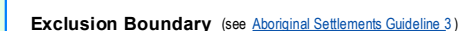


## Land Administration



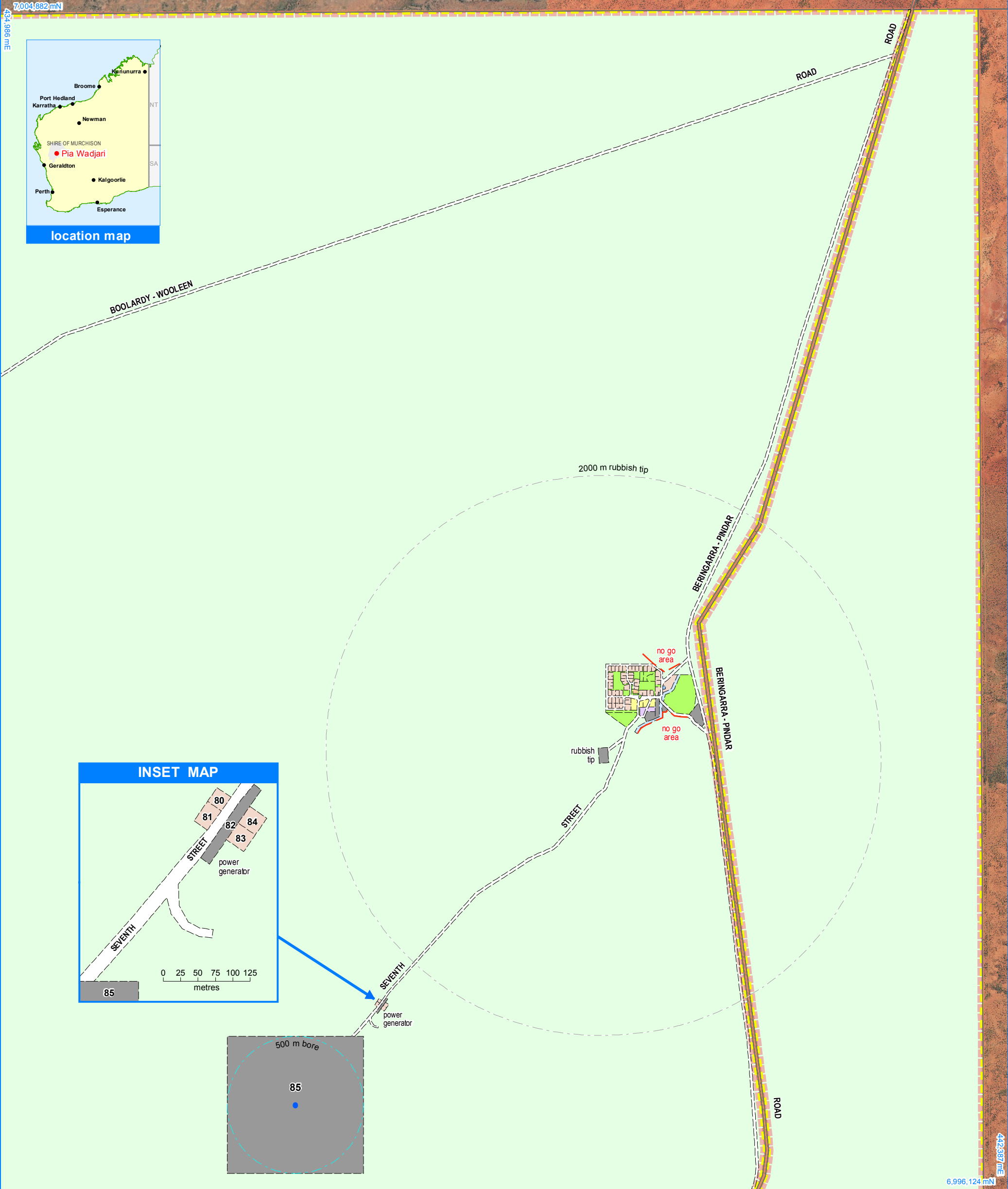
projection : MGA zone 50, GDA 94



Western  
Australian  
Planning  
Commission

## Pia Wadjari Layout Plan 1 Background Report

Layout Plan 1 endorsement	
Community	2 September 2002
Local Government	26 September 2002
Traditional Owners	-
WAPC	1 July 2003
Amendment 3 endorsement	
WAPC	1 September 2016



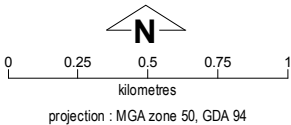
Pia Wadjari Layout Plan 1 - Living Area

Amendment 3



This Layout Plan does not constitute development approval. It is the responsibility of the developer to ensure that all relevant consents, approvals, licences and clearances are in place prior to commencing physical works on the site. Organisations responsible for such matters may include land owner, local government, incorporated community council, native title representative body, native title prescribed body corporate, Aboriginal Cultural Materials Committee, Environmental Protection Authority, state and federal government departments, and other relevant regulatory authorities.

Layout Plan 1 endorsement	
Community	2 September 2002
Local Government	26 September 2002
Traditional Owners	-
WAPC	1 July 2003
Amendment 3 endorsement	
WAPC	1 September 2016



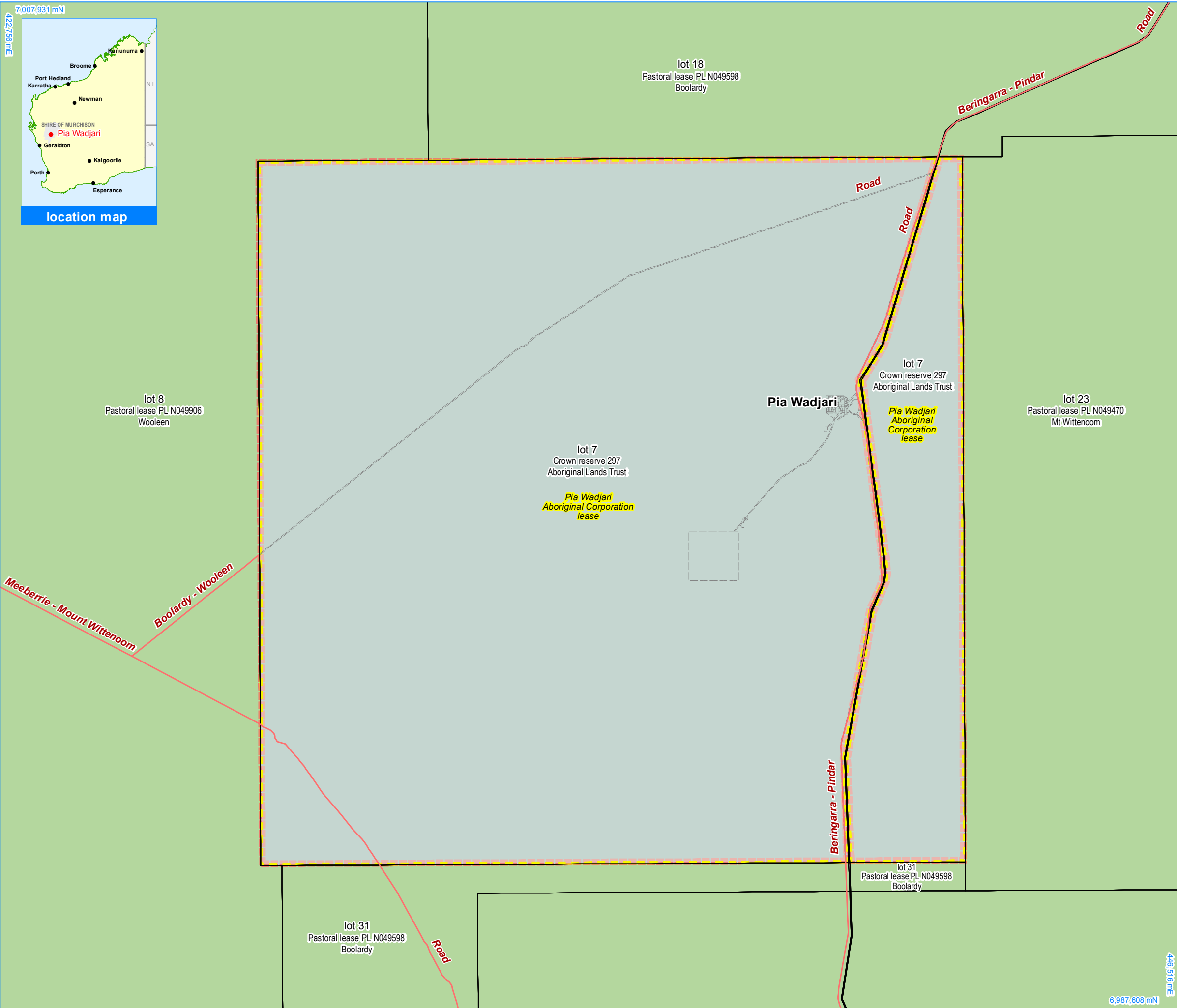
Base information and aerial imagery supplied by the Western Australian Land Information Authority SLIP 1096-2018-1. October 2006, March 2017 & October 2018 aerial images. Extraction date of cadastre 16/11/2018.  
**Settlement layout lots are not derived from calculated dimensions.**  
Map document : Pia Wadjari LP1 Amd3 - Context v3.mxd  
Produced by Land Use Planning, Department of Planning, Lands & Heritage, on behalf of the Western Australian Planning Commission.  
© Western Australian Planning Commission 2018

Land Use

road reserve	road, essential service distribution network
residential	house, residential quarters
visitor camping	camping ground, traditional law and culture
community	child care premises, civic use, corrective institution, educational establishment, health care centre, worship building
open space	agriculture - extensive, essential service distribution network, traditional law and culture
rural	rural pursuit, agriculture - extensive, animal husbandry - intensive, agriculture - intensive, essential service distribution network
recreation	recreation, essential service distribution network
pedestrian access way	essential service distribution network, pedestrian access way
drinking water source protection area	any use permitted under the Drinking Water Source Protection Plan
waterway	agriculture - extensive, agriculture - intensive, traditional law and culture
commercial	art centre, caravan park, motel, office, service station, shop, tourism accommodation
industrial	fuel depot, industry, motor vehicle repair, storage, vehicle wrecking
public utility	electricity supply, essential service distribution network, drinking water supply, wastewater disposal, telecommunications, rubbish disposal

Features

●	production bore
Land Administration	
	cadastre
	lodged cadastre
	private lease
	recommended settlement zone
	settlement zone
	settlement layout (SL) lot & SL-lot number
Exclusion Boundary	
	drinking water source wellhead protection zone
	no-go area
	utility



# Pia Wadjari Layout Plan 1 - Land Tenure Amendment 3

## Land Tenure

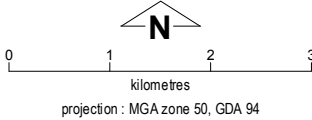
crown reserve	
crown reserve	- Aboriginal Lands Trust
Department of Biodiversity, Conservation & Attractions managed	
freehold	
leasehold	
other	
pastoral lease	
pastoral lease	- Aboriginal Lands Trust
unallocated crown land	
water reserve	

## Land Administration

	cadastre
	lodged cadastre
	private lease
	recommended settlement zone
	settlement zone
63	settlement layout (SL) lot & SL-lot number

## Roads

	national highway
	state highway
	major road
	minor road
	track



This Layout Plan does not constitute development approval. It is the responsibility of the developer to ensure that all relevant consents, approvals, licences and clearances are in place prior to commencing physical works on the site. Organisations responsible for such matters may include land owner, local government, incorporated community council, native title representative body, native title prescribed body corporate, Aboriginal Cultural Materials Committee, Environmental Protection Authority, state and federal government departments, and other relevant regulatory authorities.

Base information supplied by the Western Australian Land Information Authority SLIP 1096-2018-1. Cadastre date 16/11/2018. Settlement layout lots are not derived from calculated dimensions. Map document : Pia Wadjari LP1 Amd3 - Land Tenure v2.mxd Produced by Land Use Planning, Department of Planning, Lands & Heritage on behalf of the Western Australian Planning Commission. © Western Australian Planning Commission 2018



Layout Plan 1 endorsement	
Community	2 September 2002
Local Government	26 September 2002
Traditional Owners	-
WAPC	1 July 2003
Amendment 3 endorsement	
WAPC	1 September 2016