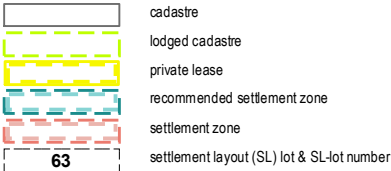




Kalumburu Layout Plan 2 - Living Area Amendment 12

Land Administration

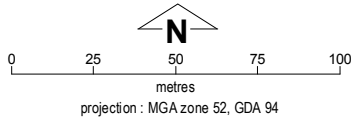


Exclusion Boundary (see [Aboriginal Settlements Guideline 3](#))



Land Use (see [Aboriginal Settlements Guideline 1](#))

road reserve	road, essential service distribution network
residential	house, residential quarters
visitor camping	camping ground, traditional law and culture
community	child care premises, civic use, corrective institution, educational establishment, health care centre, worship building
open space	agriculture - extensive, essential service distribution network, traditional law and culture
rural	rural pursuit, agriculture - extensive, animal husbandry - intensive, agriculture - intensive, essential service distribution network
recreation	recreation, essential service distribution network
pedestrian access way	essential service distribution network, pedestrian access way
drinking water source protection area	any use permitted under the Drinking Water Source Protection Plan
waterway	agriculture - extensive, agriculture - intensive, traditional law and culture
commercial	art centre, caravan park, motel, office, service station, shop, tourism accommodation
industrial	fuel depot, industry, motor vehicle repair, storage, vehicle wrecking
public utility	electricity supply, essential service distribution network, drinking water supply, wastewater disposal, telecommunications, rubbish disposal



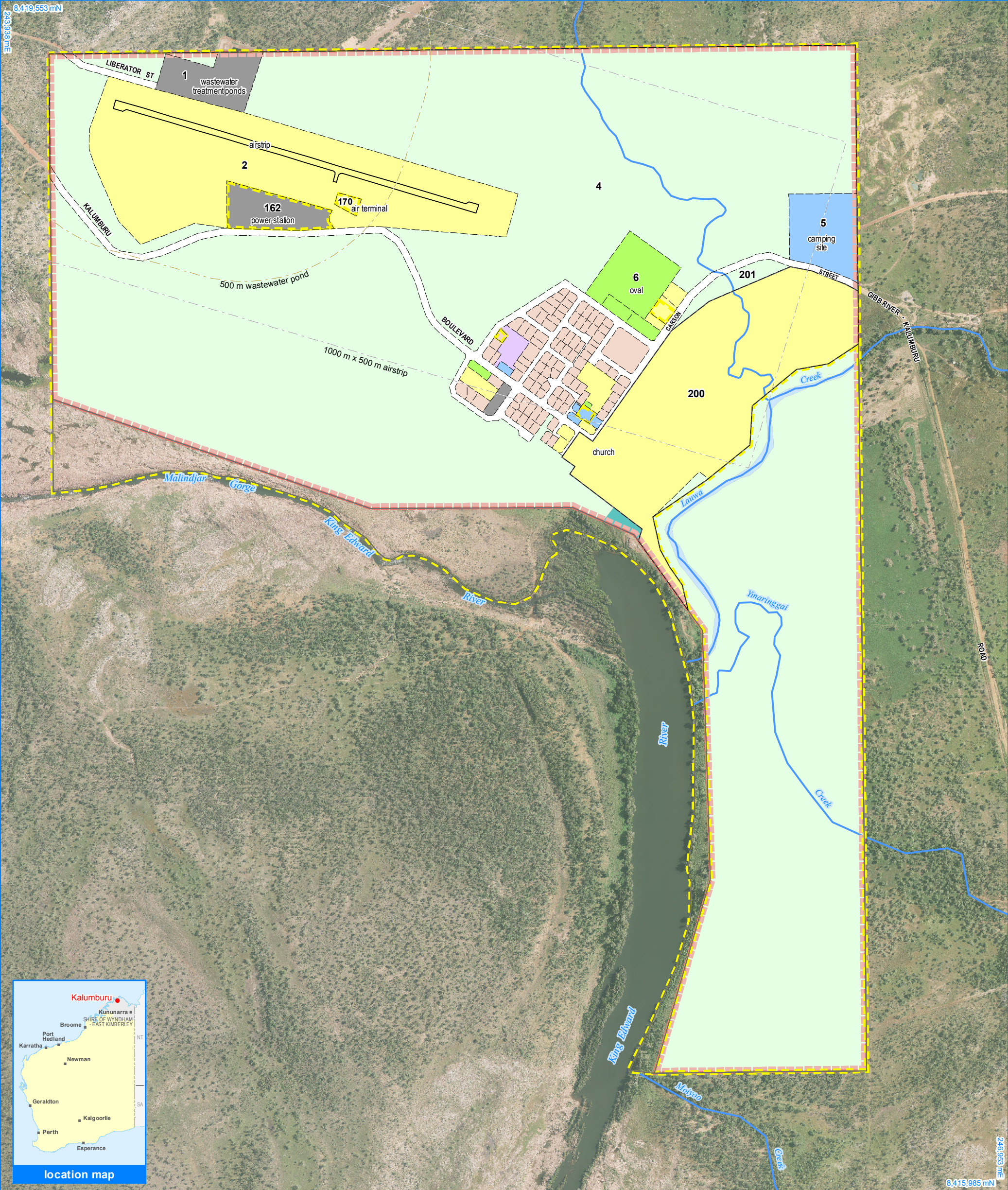
This Layout Plan does not constitute development approval. It is the responsibility of the developer to ensure that all relevant consents, approvals, licences and clearances are in place prior to commencing physical works on the site. Organisations responsible for such matters may include land owner, local government, incorporated community council, native title representative body, native title prescribed body corporate, Aboriginal Cultural Materials Committee, Environmental Protection Authority, state and federal government departments, and other relevant regulatory authorities. Go to the [PlanWA interactive planning map](#) to view Layout Plans with other spatial layers.

Base information and aerial imagery supplied by the Western Australian Land Information Authority SLIP 1096-2018-1. Cadastre date 17/01/2020. March 2019 aerial image. For Finished Floor Levels, refer to Kalumburu Community Flood Study May 2018, commissioned by the Department of Communities (Housing). Drinking water source protection area derived from the Kalumburu Community Drinking Water Source Protection Plan, May 2010, commissioned by the Dept. of Communities (Housing). Settlement layout lots are not derived from calculated dimensions. Map document : Kalumburu LP2 Amd12 - Living Area.mxd Produced by Land Use Planning, Department of Planning, Lands & Heritage on behalf of the Western Australian Planning Commission. © Western Australian Planning Commission 2020



Kalumburu Layout Plan 2 Background Report

Layout Plan 2 endorsement	
Community	13 December 2004
Local Government	7 July 2005
Traditional Owners	-
WAPC	4 October 2005
Amendment 12 endorsement	
WAPC	17 January 2020



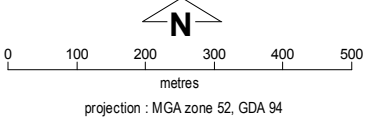
Kalumburu Layout Plan 2 - Context

Amendment 12



This Layout Plan does not constitute development approval. It is the responsibility of the developer to ensure that all relevant consents, approvals, licences and clearances are in place prior to commencing physical works on the site. Organisations responsible for such matters may include land owner, local government, incorporated community council, native title representative body, native title prescribed body corporate, Aboriginal Cultural Materials Committee, Environmental Protection Authority, state and federal government departments, and other relevant regulatory authorities. Go to the [PlanWA interactive planning map](#) to view Layout Plans with other spatial layers.

Layout Plan 2 endorsement	
Community	13 December 2004
Local Government	7 July 2005
Traditional Owners	-
WAPC	4 October 2005
Amendment 12 endorsement	
WAPC	17 January 2020



Base information and aerial imagery supplied by the Western Australian Land Information Authority SLIP 1096-2018-1. March 2019 aerial image. Extraction date of cadastre 17/01/2020. For Finished Floor Levels, refer to Kalumburu Community Flood Study May 2018, commissioned by the Department of Communities (Housing). Drinking water source protection area derived from the Kalumburu Community Drinking Water Source Protection Plan, May 2010, commissioned by the Department of Communities (Housing). Settlement layout lots are not derived from calculated dimensions. Map document : Kalumburu LP2 Amd 12 - Context.mxd Produced by Land Use Planning, Department of Planning, Lands & Heritage, on behalf of the Western Australian Planning Commission. © Western Australian Planning Commission 2020

Land Use

road reserve	road, essential service distribution network
residential	house, residential quarters
visitor camping	camping ground, traditional law and culture
community	child care premises, civic use, corrective institution, educational establishment, health care centre, worship building
open space	agriculture - extensive, essential service distribution network, traditional law and culture
rural	rural pursuit, agriculture - extensive, animal husbandry - intensive, agriculture - intensive, essential service distribution network
recreation	recreation, essential service distribution network
pedestrian access way	essential service distribution network, pedestrian access way
drinking water source protection area	any use permitted under the Drinking Water Source Protection Plan
waterway	agriculture - extensive, agriculture - intensive, traditional law and culture
commercial	art centre, caravan park, motel, office, service station, shop, tourism accommodation
industrial	fuel depot, industry, motor vehicle repair, storage, vehicle wrecking
public utility	electricity supply, essential service distribution network, drinking water supply, wastewater disposal, telecommunications, rubbish disposal

Features

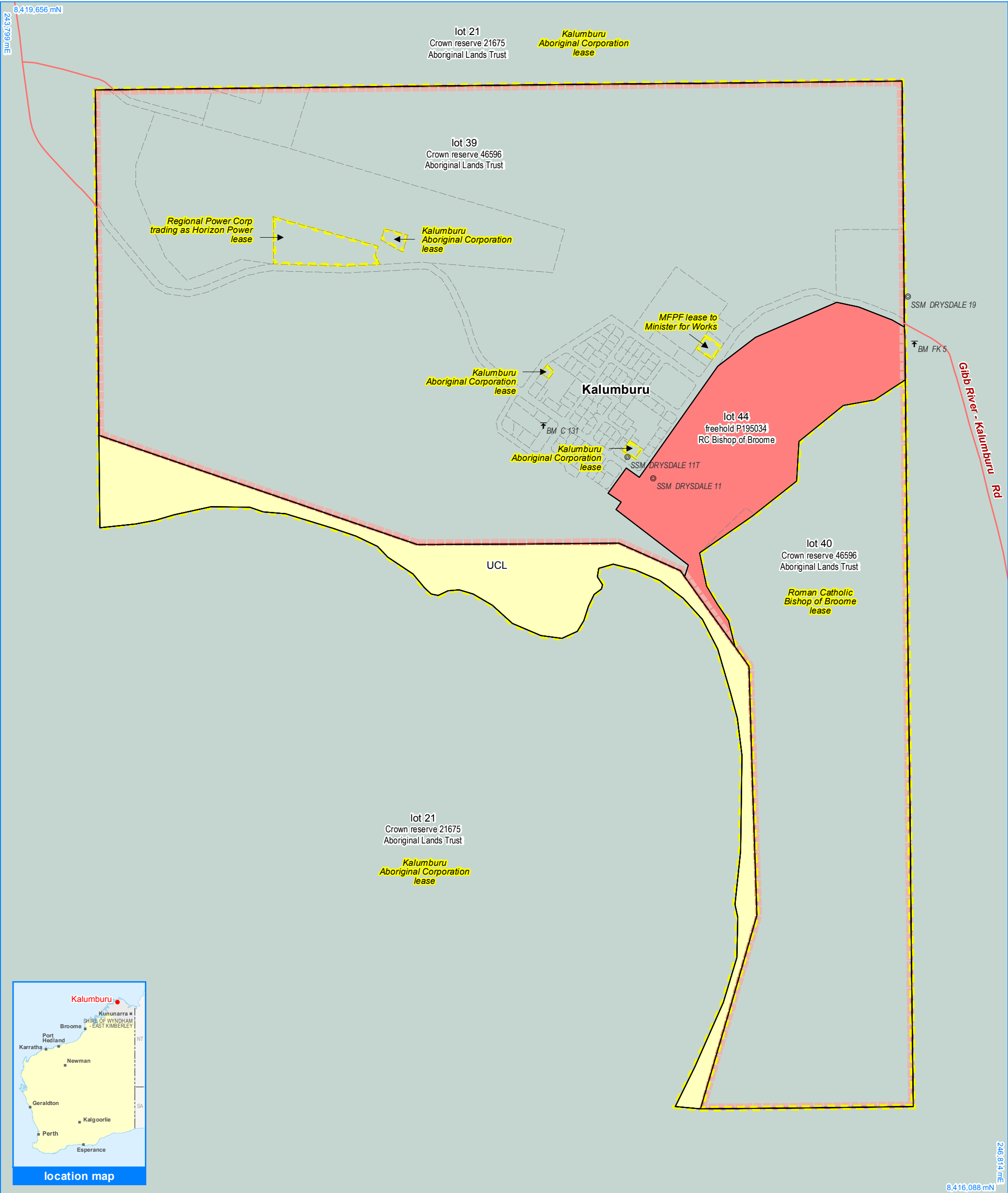
as-constructed miscellaneous feature
watercourse

Land Administration

cadastre
lodged cadastre
private lease
recommended settlement zone
settlement zone
settlement layout (SL) lot & SL-lot number

Exclusion Boundary

utility
wastewater



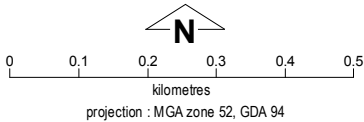
Kalumburu Layout Plan 2 - Land Tenure

Amendment 12



This Layout Plan does not constitute development approval. It is the responsibility of the developer to ensure that all relevant consents, approvals, licences and clearances are in place prior to commencing physical works on the site. Organisations responsible for such matters may include land owner, local government, incorporated community council, native title representative body, native title prescribed body corporate, Aboriginal Cultural Materials Committee, Environmental Protection Authority, state and federal government departments, and other relevant regulatory authorities. Go to the [PlanWA interactive planning map](#) to view Layout Plans with other spatial layers.

Layout Plan 2 endorsement	
Community	13 December 2004
Local Government	7 July 2005
Traditional Owners	-
WAPC	4 October 2005
Amendment 12 endorsement	
WAPC	17 January 2020



Base information and aerial imagery supplied by the Western Australian Land Information Authority SLIP 1096-2018-1. Extraction date of cadastre 17/01/2020. Settlement layout lots are not derived from calculated dimensions. Map document : Kalumburu LP2 Amd12 - Land Tenure.mxd Produced by Land Use Planning, Department of Planning, Lands & Heritage, on behalf of the Western Australian Planning Commission. © Western Australian Planning Commission 2020

Land Tenure

crown reserve	
crown reserve	- Aboriginal Lands Trust
Department of Biodiversity, Conservation & Attractions managed	
freehold	
leasehold	
other	
pastoral lease	
pastoral lease	- Aboriginal Lands Trust
unallocated crown land	
water reserve	

Geodetic Survey Marks

⬆	bench mark & name
⊙	standard survey mark & name

Land Administration

	cadastre
	lodged cadastre
	private lease
	recommended settlement zone
	settlement zone
	settlement layout (SL) lot

Roads

	national highway
	state highway
	major road
	minor road
	track