

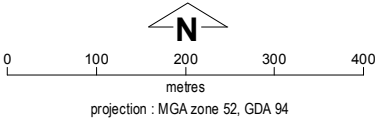
Jimbilum & Yirrallelm Layout Plan 1 - Context

Amendment 2



This Layout Plan does not constitute development approval. It is the responsibility of the developer to ensure that all relevant consents, approvals, licences and clearances are in place prior to commencing physical works on the site. Organisations responsible for such matters may include land owner, local government, incorporated community council, native title representative body, native title prescribed body corporate, Aboriginal Cultural Materials Committee, Environmental Protection Authority, state and federal government departments, and other relevant regulatory authorities. Go to the [PlanWA interactive planning map](#) to view Layout Plans with other spatial layers.

Jimbilum Layout Plan 1 endorsement	
Community	26 November 2010
Local Government	21 June 2011
Traditional Owners	17 January 2011
WAPC	29 September 2011
Amendment 2 endorsement	
WAPC	17 January 2020



Base information and aerial imagery supplied by the Western Australian Land Information Authority SLIP 1096-2018-1. May 2019 aerial image. Extraction date of cadastre 10/01/2020. Settlement layout lots are not derived from calculated dimensions. Map document : Jimbilum Yirrallelm LP1 Amd2 - Context.mxd Produced by Land Use Planning, Department of Planning, Lands & Heritage, on behalf of the Western Australian Planning Commission. © Western Australian Planning Commission 2020

Yirrallelm Layout Plan 1 endorsement	
Community	16 November 2010
Local Government	21 June 2011
Traditional Owners	17 January 2011
WAPC	29 September 2011
Amendment 2 endorsement	
WAPC	17 January 2020

Land Use

road reserve	road, essential service distribution network
residential	house, residential quarters
visitor camping	camping ground, traditional law and culture
community	child care premises, civic use, corrective institution, educational establishment, health care centre, worship building
open space	agriculture - extensive, essential service distribution network, traditional law and culture
rural	rural pursuit, agriculture - extensive, animal husbandry - intensive, agriculture - intensive, essential service distribution network
recreation	recreation, essential service distribution network
pedestrian access way	essential service distribution network, pedestrian access way
drinking water source protection area	any use permitted under the Drinking Water Source Protection Plan
waterway	agriculture - extensive, agriculture - intensive, traditional law and culture
commercial	art centre, caravan park, motel, office, service station, shop, tourism accommodation
industrial	fuel depot, industry, motor vehicle repair, storage, vehicle wrecking
public utility	electricity supply, essential service distribution network, drinking water supply, wastewater disposal, telecommunications, rubbish disposal

Features

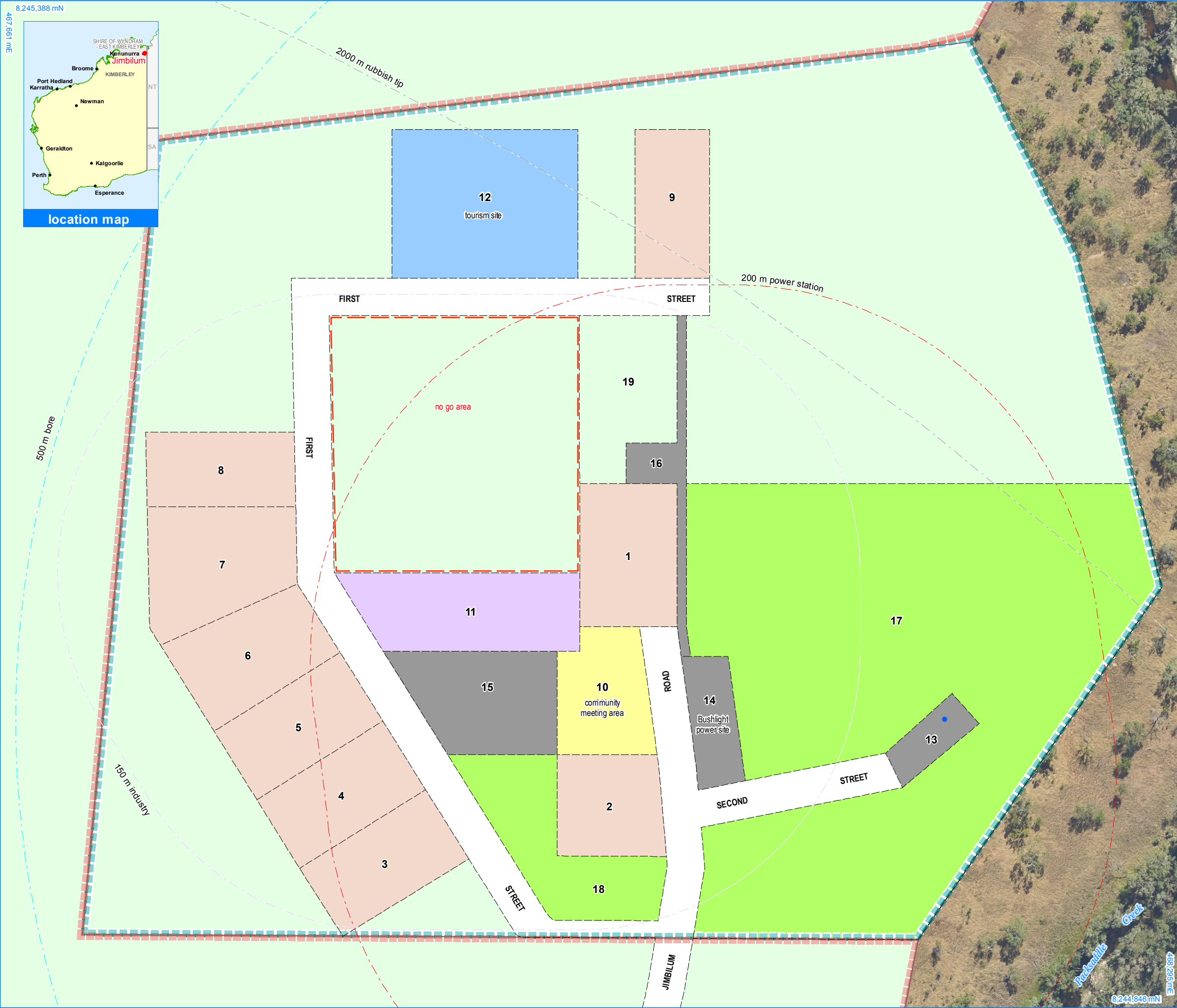
- bore
- watercourse

Land Administration

- cadastre
- lodged cadastre
- private lease
- recommended settlement zone
- settlement zone
- settlement layout (SL) lot & SL-lot number

Exclusion Boundary

- drinking water source wellhead protection zone
- no-go area
- utility



Jimbilum Layout Plan 1 - Living Area Amendment 2

Features

●

bore

Land Administration

cadastre

lodged cadastre

private lease

recommended settlement zone

settlement zone

63

settlement layout (SL) lot & SL-lot number

Exclusion Boundary (see [Aboriginal Settlements Guideline 3](#))

drinking water source wellhead protection zone

industry

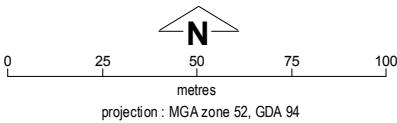
no-go area

power station

utility

Land Use (see [Aboriginal Settlements Guideline 1](#))

road reserve	road, essential service distribution network
residential	house, residential quarters
visitor camping	camping ground, traditional law and culture
community	child care premises, civic use, corrective institution, educational establishment, health care centre, worship building
open space	agriculture - extensive, essential service distribution network, traditional law and culture
rural	rural pursuit, agriculture - extensive, animal husbandry - intensive, agriculture - intensive, essential service distribution network
recreation	recreation, essential service distribution network
pedestrian access way	essential service distribution network, pedestrian access way
drinking water source protection area	any use permitted under the Drinking Water Source Protection Plan
waterway	agriculture - extensive, agriculture - intensive, traditional law and culture
commercial	art centre, caravan park, motel, office, service station, shop, tourism accommodation
industrial	fuel depot, industry, motor vehicle repair, storage, vehicle wrecking
public utility	electricity supply, essential service distribution network, drinking water supply, wastewater disposal, telecommunications, rubbish disposal

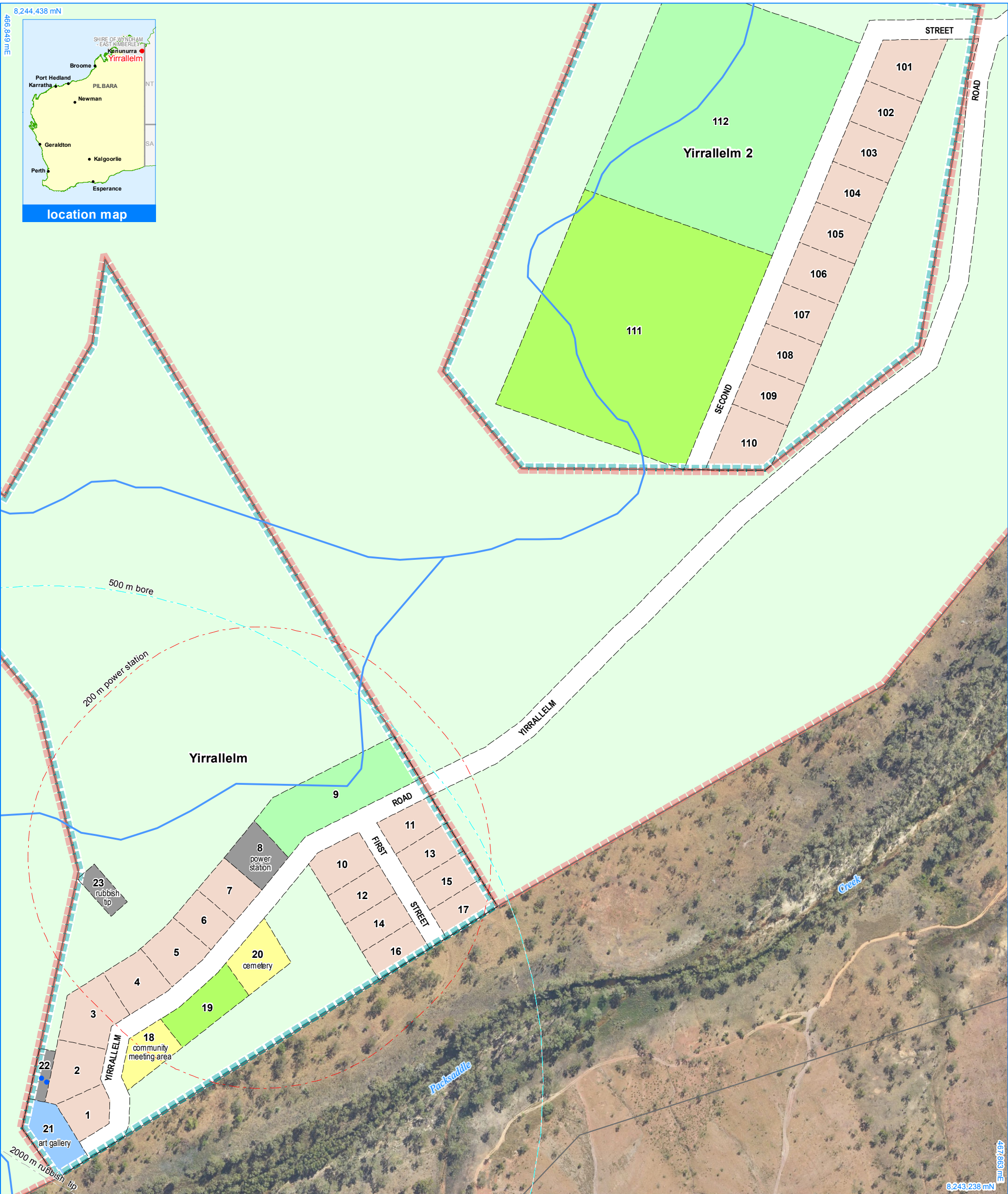


This Layout Plan does not constitute development approval. It is the responsibility of the developer to ensure that all relevant consents, approvals, licences and clearances are in place prior to commencing physical works on the site. Organisations responsible for such matters may include land owner, local government, incorporated community council, native title representative body, native title prescribed body corporate, Aboriginal Cultural Materials Committee, Environmental Protection Authority, state and federal government departments, and other relevant regulatory authorities. Go to the [PlanWA interactive planning map](#) to view Layout Plans with other spatial layers. Base information and aerial imagery supplied by the Western Australian Land Information Authority SLIP 1096-2018-1. Cadastre date 10/01/2020. May 2019 aerial image. Settlement layout lots are not derived from calculated dimensions. Map document : Jimbilum LP1 Amd2 - Living Area.mxd Produced by Land Use Planning, Department of Planning, Lands & Heritage on behalf of the Western Australian Planning Commission. © Western Australian Planning Commission 2020



Jimbilum Layout Plan 1 Background Report

Layout Plan 1 endorsement	
Community	26 November 2010
Local Government	21 June 2011
Traditional Owners	17 January 2011
WAPC	29 September 2011
Amendment 2 endorsement	
WAPC	17 January 2020

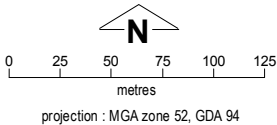


Yirrallelm Layout Plan 1 - Living Area



This Layout Plan does not constitute development approval. It is the responsibility of the developer to ensure that all relevant consents, approvals, licences and clearances are in place prior to commencing physical works on the site. Organisations responsible for such matters may include land owner, local government, incorporated community council, native title representative body, native title prescribed body corporate, Aboriginal Cultural Materials Committee, Environmental Protection Authority, state and federal government departments, and other relevant regulatory authorities. Go to the [PlanWA interactive planning map](#) to view Layout Plans with other spatial layers.

Layout Plan 1 endorsement	
Community	16 November 2010
Local Government	21 June 2011
Traditional Owners	17 January 2011
WAPC	29 September 2011
Amendment 2 endorsement	
WAPC	17 January 2020



Yirrallelm Layout Plan 1 Background Report

Base information and aerial imagery supplied by the Western Australian Land Information Authority SLIP 1096-2018-1. May 2019 aerial image. Extraction date of cadastre 10/01/2020.

Settlement layout lots are not derived from calculated dimensions.

Map document : Yirrallelm (1&2) LP1 Amd2 - Living Area.mxd

Produced by Land Use Planning, Department of Planning, Lands & Heritage, on behalf of the Western Australian Planning Commission.

© Western Australian Planning Commission 2020

Land Use (see [Aboriginal Settlements Guideline 1](#))

road reserve	road, essential service distribution network
residential	house, residential quarters
visitor camping	camping ground, traditional law and culture
community	child care premises, civic use, corrective institution, educational establishment, health care centre, worship building
open space	agriculture - extensive, essential service distribution network, traditional law and culture
rural	rural pursuit, agriculture - extensive, animal husbandry - intensive, agriculture - intensive, essential service distribution network
recreation	recreation, essential service distribution network
pedestrian access way	essential service distribution network, pedestrian access way
drinking water source protection area	any use permitted under the Drinking Water Source Protection Plan
waterway	agriculture - extensive, agriculture - intensive, traditional law and culture
commercial	art centre, caravan park, motel, office, service station, shop, tourism accommodation
industrial	fuel depot, industry, motor vehicle repair, storage, vehicle wrecking
public utility	electricity supply, essential service distribution network, drinking water supply, wastewater disposal, telecommunications, rubbish disposal

Features

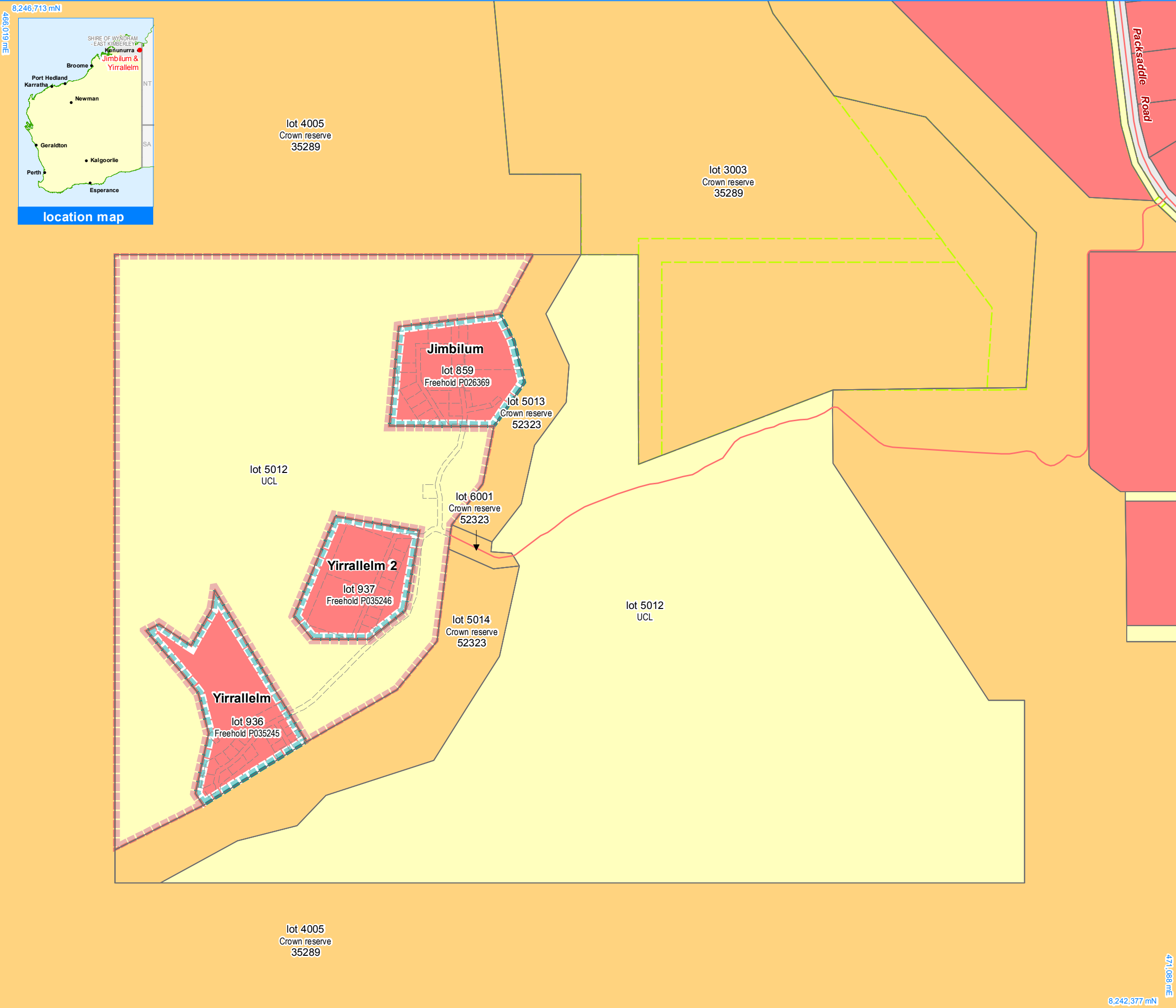
- bore
- watercourse

Land Administration

- cadastre
- lodged cadastre
- private lease
- recommended settlement zone
- settlement zone
- settlement layout (SL) lot & SL-lot number

Exclusion Boundary (see [Aboriginal Settlements Guideline 3](#))

- drinking water source wellhead protection zone
- power station
- utility



Jimbilum Yirrallelm Layout Plan 1 - Land Tenure Amendment 2

Land Tenure

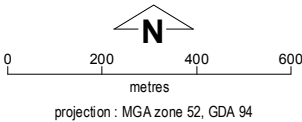
crown reserve	
crown reserve	- Aboriginal Lands Trust
Department of Biodiversity, Conservation & Attractions managed	
freehold	
leasehold	
other	
pastoral lease	
pastoral lease	- Aboriginal Lands Trust
unallocated crown land	
water reserve	

Land Administration

	cadastre
	lodged cadastre
	private lease
	recommended settlement zone
	settlement zone
	settlement layout (SL) lot

Roads

	national highway
	state highway
	major road
	minor road
	track



This Layout Plan does not constitute development approval. It is the responsibility of the developer to ensure that all relevant consents, approvals, licences and clearances are in place prior to commencing physical works on the site. Organisations responsible for such matters may include land owner, local government, incorporated community council, native title representative body, native title prescribed body corporate, Aboriginal Cultural Materials Committee, Environmental Protection Authority, state and federal government departments, and other relevant regulatory authorities. Go to the [PlanWA interactive planning map](#) to view Layout Plans with other spatial layers.

Base information supplied by the Western Australian Land Information Authority
SLIP 1096-2018-1. Cadastre date 10/01/2020.
Settlement layout lots are not derived from calculated dimensions.
Map document : Jimbilum Yirrallelm LP1 Amd2 - Land Tenure.mxd
Produced by Land Use Planning, Department of Planning, Lands & Heritage on behalf of the Western Australian Planning Commission.
© Western Australian Planning Commission 2019



Jimbilum Layout Plan 1 endorsement	
Community	26 November 2010
Local Government	21 June 2011
Traditional Owners	17 January 2011
WAPC	29 September 2011
Amendment 2 endorsement	
WAPC	17 January 2020

Yirrallelm Layout Plan 1 endorsement	
Community	16 November 2010
Local Government	21 June 2011
Traditional Owners	17 January 2011
WAPC	29 September 2011
Amendment 2 endorsement	
WAPC	17 January 2020