

Yiyili Layout Plan 2 - Context

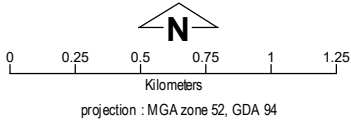
Amendment 4



This Layout Plan does not constitute development approval. It is the responsibility of the developer to ensure that all relevant consents, approvals, licences and clearances are in place prior to commencing physical works on the site. Organisations responsible for such matters may include land owner, local government, incorporated community council, native title representative body, native title prescribed body corporate, Aboriginal Cultural Materials Committee, Environmental Protection Authority, state and federal government departments, and other relevant regulatory authorities.

Go to the [PlanWA interactive planning map](#) to view Layout Plans with other spatial layers.

Layout Plan 2 endorsement	
Community	2 December 2010
Local Government	21 April 2011
Traditional Owners	-
WAPC	29 September 2011
Amendment 4 endorsement	
WAPC	20 May 2020



Base information and aerial imagery supplied by the Western Australian Land Information Authority SLIP 1096-2018-1, July 2005 and October 2019 aerial images. Extraction date of cadastre 20/05/2020. Drinking water source protection area derived from the Yiyili Drinking Water Source Protection Plan 2017 commissioned by the Department of Planning.

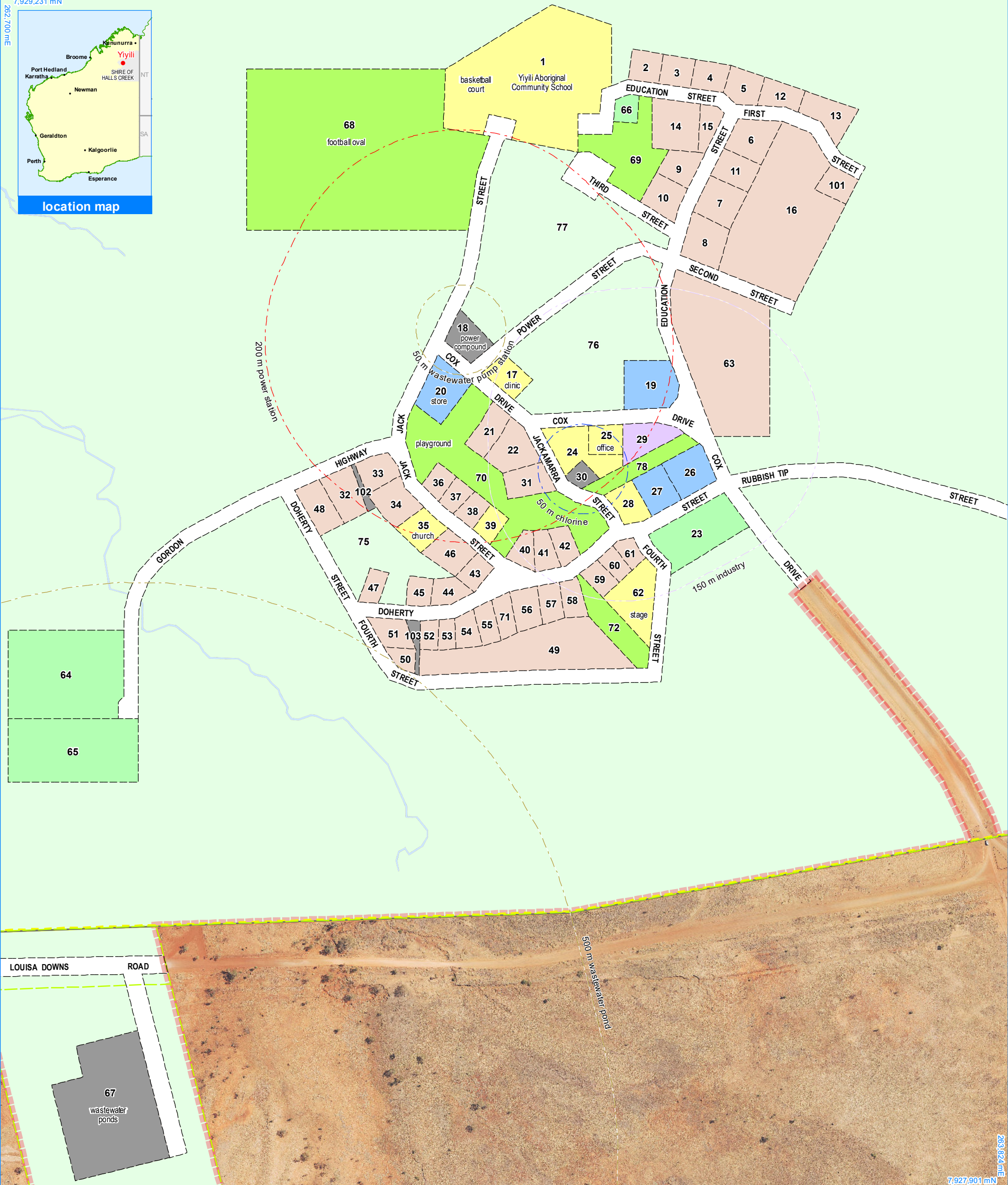
Settlement layout lots are not derived from calculated dimensions.

Map document : Yiyili LP2 Amd4 - Context E.mxd
Produced by Land Use Planning, Department of Planning, Lands and Heritage, on behalf of the Western Australian Planning Commission.
© Western Australian Planning Commission 2020

Land Use	
road reserve	road, essential service distribution network
residential	house, residential quarters
visitor camping	camping ground, traditional law and culture
community	child care premises, civic use, corrective institution, educational establishment, health care centre, worship building
open space	agriculture - extensive, essential service distribution network, traditional law and culture
rural	rural pursuit, agriculture - extensive, animal husbandry - intensive, agriculture - intensive, essential service distribution network
recreation	recreation, essential service distribution network
pedestrian access way	essential service distribution network, pedestrian access way
drinking water source protection area	any use permitted under the Drinking Water Source Protection Plan
waterway	agriculture - extensive, agriculture - intensive, traditional law and culture
commercial	art centre, caravan park, motel, office, service station, shop, tourism accommodation
industrial	fuel depot, industry, motor vehicle repair, storage, vehicle wrecking
public utility	electricity supply, essential service distribution network, drinking water supply, wastewater disposal, telecommunications, rubbish disposal

Features	
	bore - potable water
	as-constructed miscellaneous feature
Land Administration	
	cadastre
	lodged cadastre
	private lease
	recommended settlement zone
	settlement zone
	settlement layout (SL) lot & SL-lot number
	63
Exclusion Boundary	
	utility
	wastewater





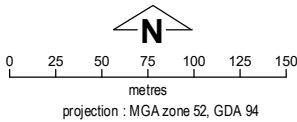
Yiyili Layout Plan 2 - Living Area

Amendment 4



This Layout Plan does not constitute development approval. It is the responsibility of the developer to ensure that all relevant consents, approvals, licences and clearances are in place prior to commencing physical works on the site. Organisations responsible for such matters may include land owner, local government, incorporated community council, native title representative body, native title prescribed body corporate, Aboriginal Cultural Materials Committee, Environmental Protection Authority, state and federal government departments, and other relevant regulatory authorities. Go to the [PlanWA interactive planning map](#) to view Layout Plans with other spatial layers.

Layout Plan 2 endorsement	
Community	2 December 2010
Local Government	21 April 2011
Traditional Owners	-
WAPC	29 September 2011
Amendment 4 endorsement	
WAPC	20 May 2020



Yiyili Layout Plan 2 Background Report

Base information and aerial imagery supplied by the Western Australian Land Information Authority SLIP 1096-2018-1. October 2019 aerial image. Extraction date of cadastre 20/05/2020. Drinking water source protection area derived from the Yiyili Drinking Water Source Protection Plan 2017, commissioned by the Dept. of Planning. Settlement layout lots are not derived from calculated dimensions. Map document : Yiyili LP2 Amd4 - Living Area E.mxd Produced by Land Use Planning, Dept. of Planning, Lands & Heritage, on behalf of the Western Australian Planning Commission. © Western Australian Planning Commission 2020

Land Use (see [Aboriginal Settlements Guideline 1](#))

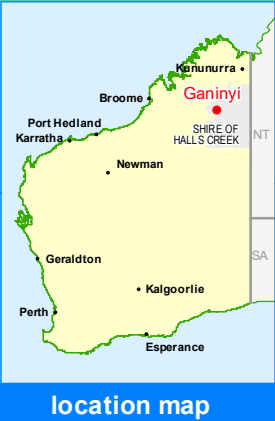
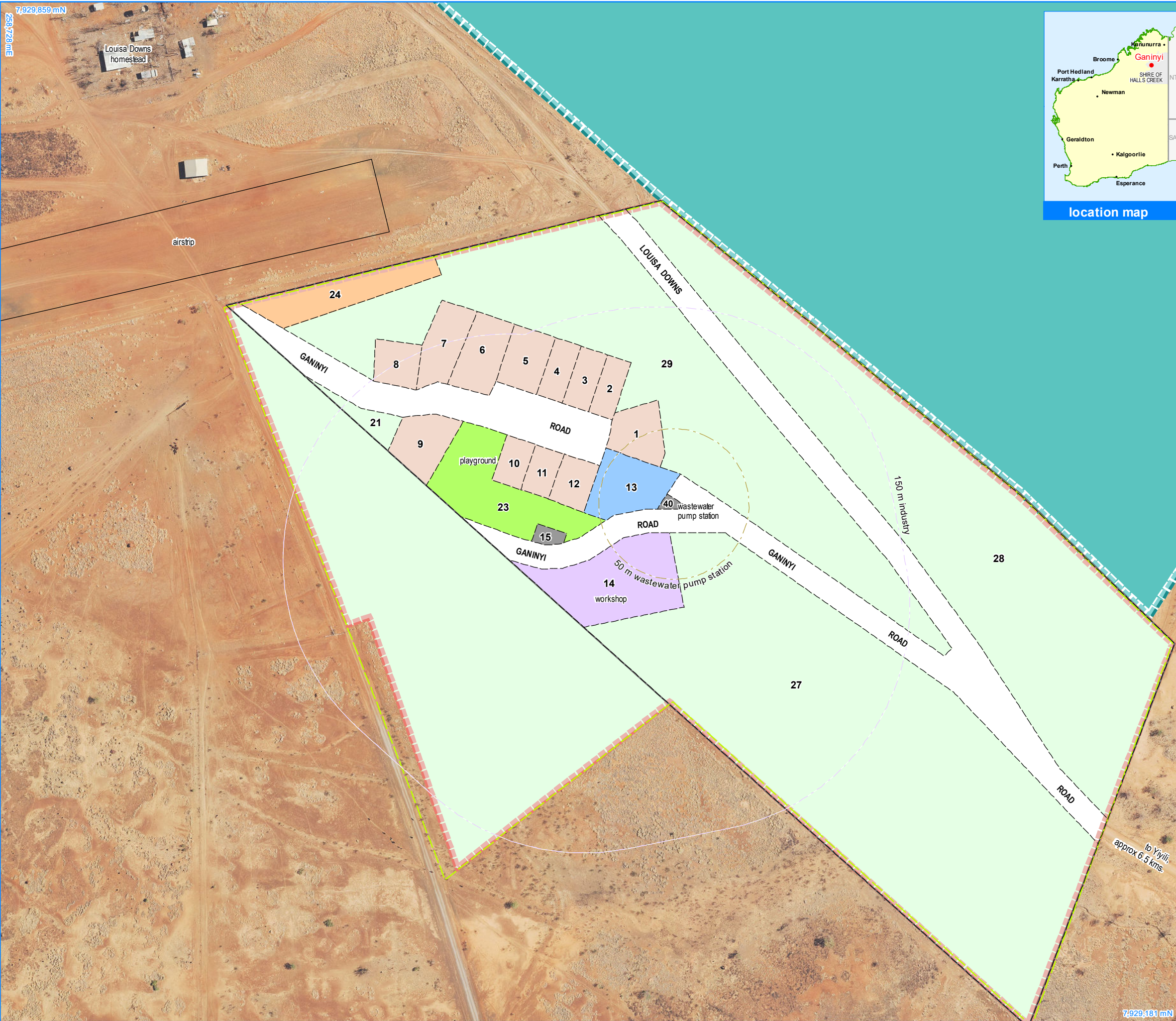
road reserve	road, essential service distribution network
residential	house, residential quarters
visitor camping	camping ground, traditional law and culture
community	child care premises, civic use, corrective institution, educational establishment, health care centre, worship building
open space	agriculture - extensive, essential service distribution network, traditional law and culture
rural	rural pursuit, agriculture - extensive, animal husbandry - intensive, agriculture - intensive, essential service distribution network
recreation	recreation, essential service distribution network
pedestrian access way	essential service distribution network, pedestrian access way
drinking water source protection area	any use permitted under the Drinking Water Source Protection Plan
waterway	agriculture - extensive, agriculture - intensive, traditional law and culture
commercial	art centre, caravan park, motel, office, service station, shop, tourism accommodation
industrial	fuel depot, industry, motor vehicle repair, storage, vehicle wrecking
public utility	electricity supply, essential service distribution network, drinking water supply, wastewater disposal, telecommunications, rubbish disposal

Land Administration

	cadastre
	lodged cadastre
	private lease
	recommended settlement zone
	settlement zone
	settlement layout (SL) lot & SL-lot number

Exclusion Boundary (see [Aboriginal Settlements Guideline 3](#))

	chlorine gas storage
	industry
	utility
	wastewater



Yiyili Layout Plan 2 - Ganinyi Living Area Amendment 4

Features

as-constructed miscellaneous feature

Land Administration

cadastre

lodged cadastre

private lease

recommended settlement zone

settlement zone

63

settlement layout (SL) lot & SL-lot number

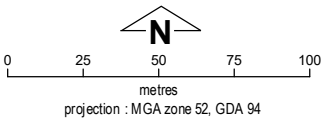
Exclusion Boundary (see [Aboriginal Settlements Guideline 3](#))

industry

wastewater

Land Use (see [Aboriginal Settlements Guideline 1](#))

road reserve	road, essential service distribution network
residential	house, residential quarters
visitor camping	camping ground, traditional law and culture
community	child care premises, civic use, corrective institution, educational establishment, health care centre, worship building
open space	agriculture - extensive, essential service distribution network, traditional law and culture
rural	rural pursuit, agriculture - extensive, animal husbandry - intensive, agriculture - intensive, essential service distribution network
recreation	recreation, essential service distribution network
pedestrian access way	essential service distribution network, pedestrian access way
drinking water source protection area	any use permitted under the Drinking Water Source Protection Plan
waterway	agriculture – extensive, agriculture – intensive, traditional law and culture
commercial	art centre, caravan park, motel, office, service station, shop, tourism accommodation
industrial	fuel depot, industry, motor vehicle repair, storage, vehicle wrecking
public utility	electricity supply, essential service distribution network, drinking water supply, wastewater disposal, telecommunications, rubbish disposal



This Layout Plan does not constitute development approval. It is the responsibility of the developer to ensure that all relevant consents, approvals, licences and clearances are in place prior to commencing physical works on the site. Organisations responsible for such matters may include land owner, local government, incorporated community council, native title representative body, native title prescribed body corporate, Aboriginal Cultural Materials Committee, Environmental Protection Authority, state and federal government departments, and other relevant regulatory authorities. Go to the [PlanWA interactive planning map](#) to view Layout Plans with other spatial layers.

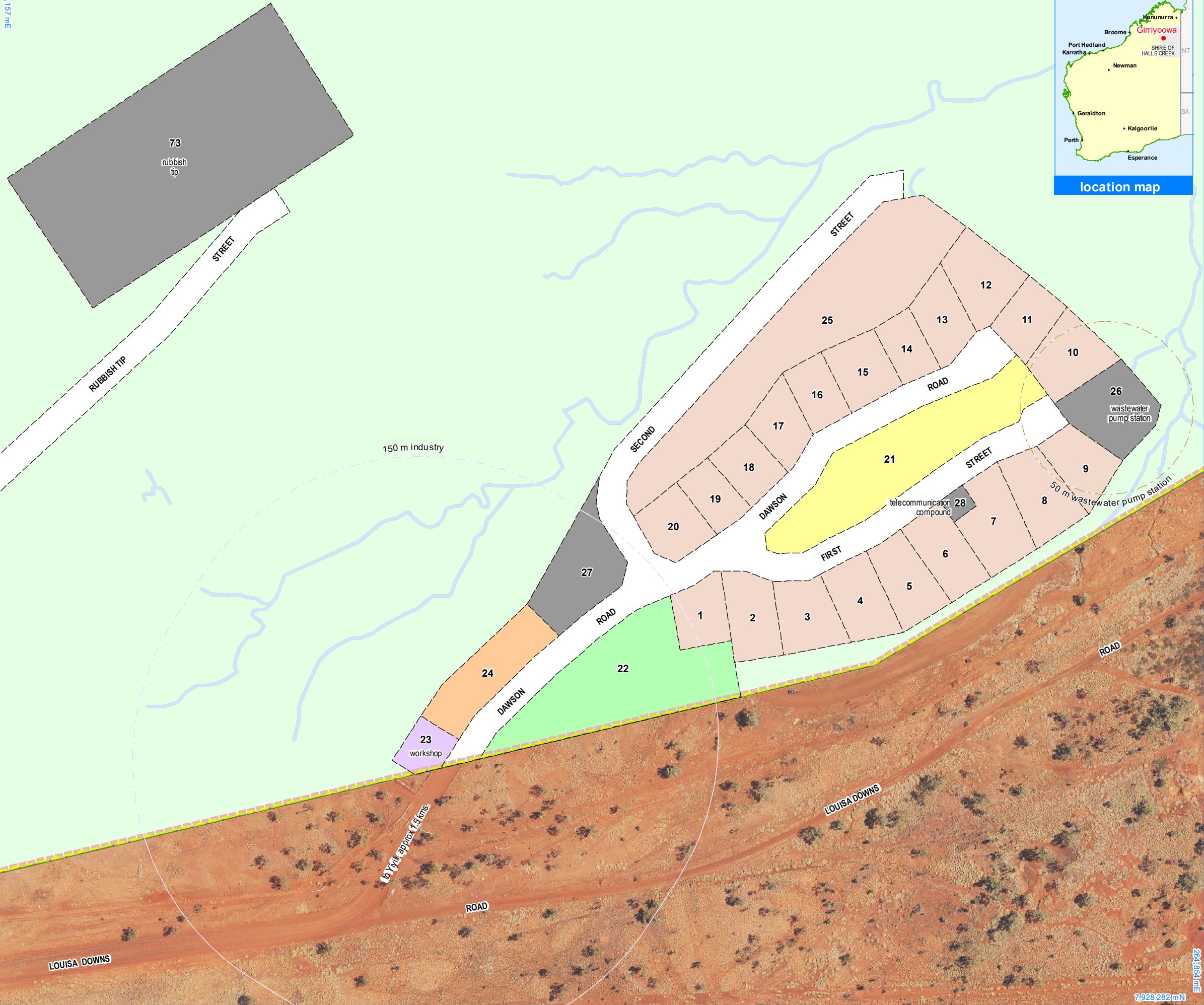
Base information and aerial imagery supplied by the Western Australian Land Information Authority SLIP 1096-2018-1. Cadastre date 20/05/2020. October 2019 aerial image. Drinking water source protection area derived from the Yiyili Drinking Water Source Protection Plan 2017, commissioned by the Department of Planning. Settlement layout lots are not derived from calculated dimensions. Map document : Ganinyi LP2 Amd4 - Living Area E.mxd Produced by Land Use Planning, Department of Planning, Lands & Heritage on behalf of the Western Australian Planning Commission. © Western Australian Planning Commission 2020



Yiyili Layout Plan 2 Background Report

Layout Plan 2 endorsement	
Community	2 December 2010
Local Government	21 April 2011
Traditional Owners	-
WAPC	29 September 2011
Amendment 4 endorsement	
WAPC	20 May 2020

7,928,878 mN
264,157 mE



Yiyili Layout Plan 2 - Girriyoowa Living Area Amendment 4

Land Administration

[Solid line]	cadastre
[Dashed line]	lodged cadastre
[Yellow fill]	private lease
[Green fill]	recommended settlement zone
[Blue fill]	settlement zone
[Red dashed line]	settlement layout (SL) lot & SL-lot number

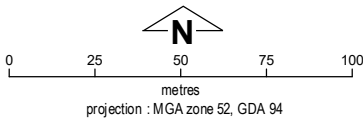
63

Exclusion Boundary (see [Aboriginal Settlements Guideline 3](#))

[Dashed line]	industry
[Dotted line]	wastewater

Land Use (see [Aboriginal Settlements Guideline 1](#))

road reserve	road, essential service distribution network
residential	house, residential quarters
visitor camping	camping ground, traditional law and culture
community	child care premises, civic use, corrective institution, educational establishment, health care centre, worship building
open space	agriculture - extensive, essential service distribution network, traditional law and culture
rural	rural pursuit, agriculture - extensive, animal husbandry - intensive, agriculture - intensive, essential service distribution network
recreation	recreation, essential service distribution network
pedestrian access way	essential service distribution network, pedestrian access way
drinking water source protection area	any use permitted under the Drinking Water Source Protection Plan
waterway	agriculture - extensive, agriculture - intensive, traditional law and culture
commercial	art centre, caravan park, motel, office, service station, shop, tourism accommodation
industrial	fuel depot, industry, motor vehicle repair, storage, vehicle wrecking
public utility	electricity supply, essential service distribution network, drinking water supply, wastewater disposal, telecommunications, rubbish disposal



This Layout Plan does not constitute development approval. It is the responsibility of the developer to ensure that all relevant consents, approvals, licences and clearances are in place prior to commencing physical works on the site. Organisations responsible for such matters may include land owner, local government, incorporated community council, native title representative body, native title prescribed body corporate, Aboriginal Cultural Materials Committee, Environmental Protection Authority, state and federal government departments, and other relevant regulatory authorities. Go to the [PlanWA interactive planning map](#) to view Layout Plans with other spatial layers.

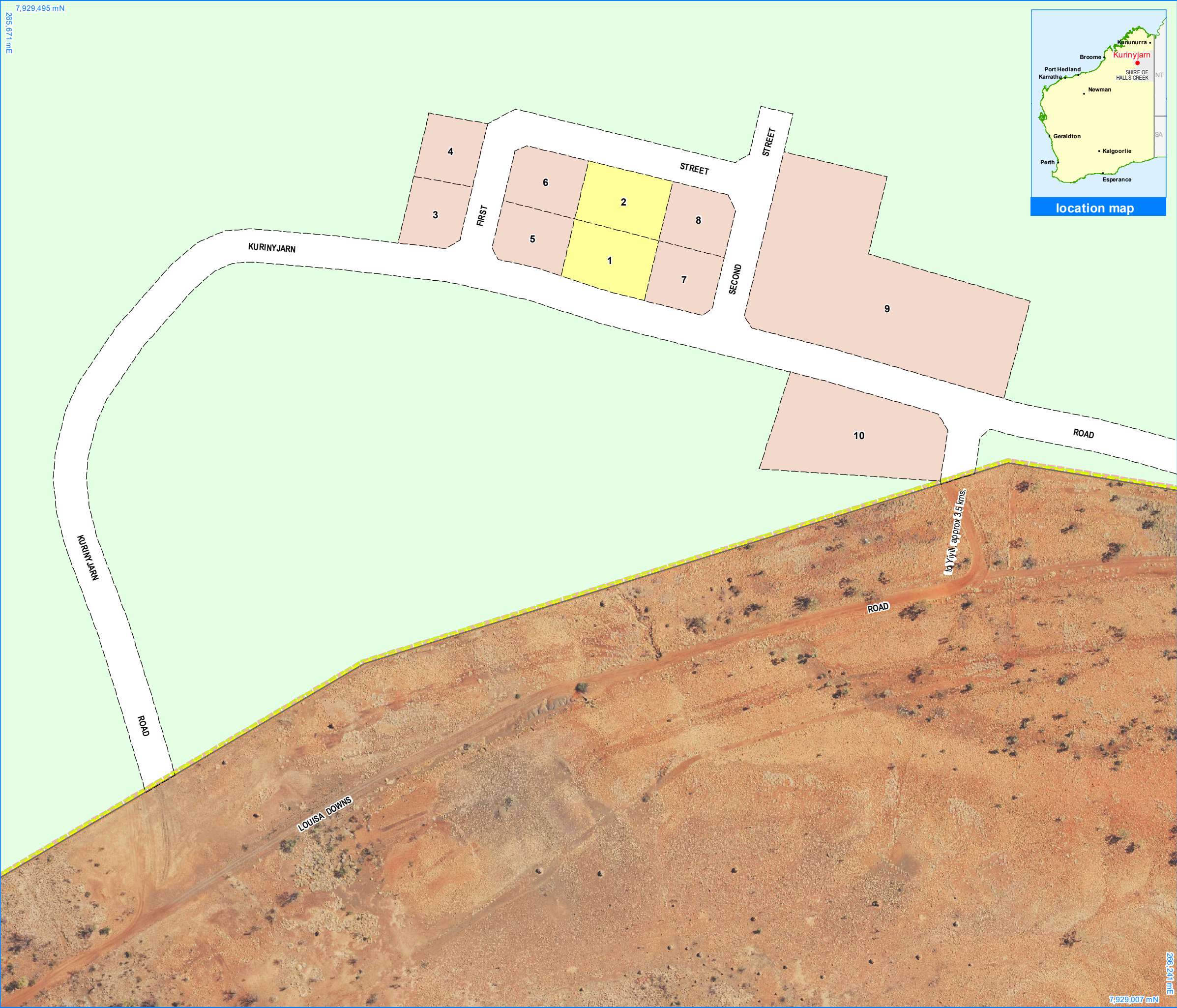
Base information and aerial imagery supplied by the Western Australian Land Information Authority SLIP 1096-2018-1. Cadastre date 20/05/2020. October 2019 aerial image. Drinking water source protection area derived from the Yiyili Drinking Water Source Protection Plan 2017, commissioned by the Department of Planning. Settlement layout lots are not derived from calculated dimensions. Map document: Girriyoowa LP2 Amd4 - Living Area E.mxd Produced by Land Use Planning, Department of Planning, Lands & Heritage on behalf of the Western Australian Planning Commission. © Western Australian Planning Commission 2020



Yiyili Layout Plan 2 Background Report

Layout Plan 2 endorsement	
Community	2 December 2010
Local Government	21 April 2011
Traditional Owners	-
WAPC	29 September 2011
Amendment 4 endorsement	
WAPC	20 May 2020

264,158 mE
7,928,282 mN



Yiyili Layout Plan 2 - Kurinyjarn Living Area Amendment 4

Land Administration

	cadastre
	lodged cadastre
	private lease
	recommended settlement zone
	settlement zone
	settlement layout (SL) lot & SL-lot number

63

Land Use (see [Aboriginal Settlements Guideline 1](#))

road reserve	road, essential service distribution network
residential	house, residential quarters
visitor camping	camping ground, traditional law and culture
community	child care premises, civic use, corrective institution, educational establishment, health care centre, worship building
open space	agriculture - extensive, essential service distribution network, traditional law and culture
rural	rural pursuit, agriculture - extensive, animal husbandry - intensive, agriculture - intensive, essential service distribution network
recreation	recreation, essential service distribution network
pedestrian access way	essential service distribution network, pedestrian access way
drinking water source protection area	any use permitted under the Drinking Water Source Protection Plan
waterway	agriculture - extensive, agriculture - intensive, traditional law and culture
commercial	art centre, caravan park, motel, office, service station, shop, tourism accommodation
industrial	fuel depot, industry, motor vehicle repair, storage, vehicle wrecking
public utility	electricity supply, essential service distribution network, drinking water supply, wastewater disposal, telecommunications, rubbish disposal

0 25 50 75 100
metres
projection : MGA zone 52, GDA 94

This Layout Plan does not constitute development approval. It is the responsibility of the developer to ensure that all relevant consents, approvals, licences and clearances are in place prior to commencing physical works on the site. Organisations responsible for such matters may include land owner, local government, incorporated community council, native title representative body, native title prescribed body corporate, Aboriginal Cultural Materials Committee, Environmental Protection Authority, state and federal government departments, and other relevant regulatory authorities. Go to the [PlanWA interactive planning map](#) to view Layout Plans with other spatial layers.

Base information and aerial imagery supplied by the Western Australian Land Information Authority SLIP 1096-2018-1. Cadastre date 20/05/2020. October 2019 aerial image. Drinking water source protection area derived from the Yiyili Drinking Water Source Protection Plan 2017, commissioned by the Department of Planning.

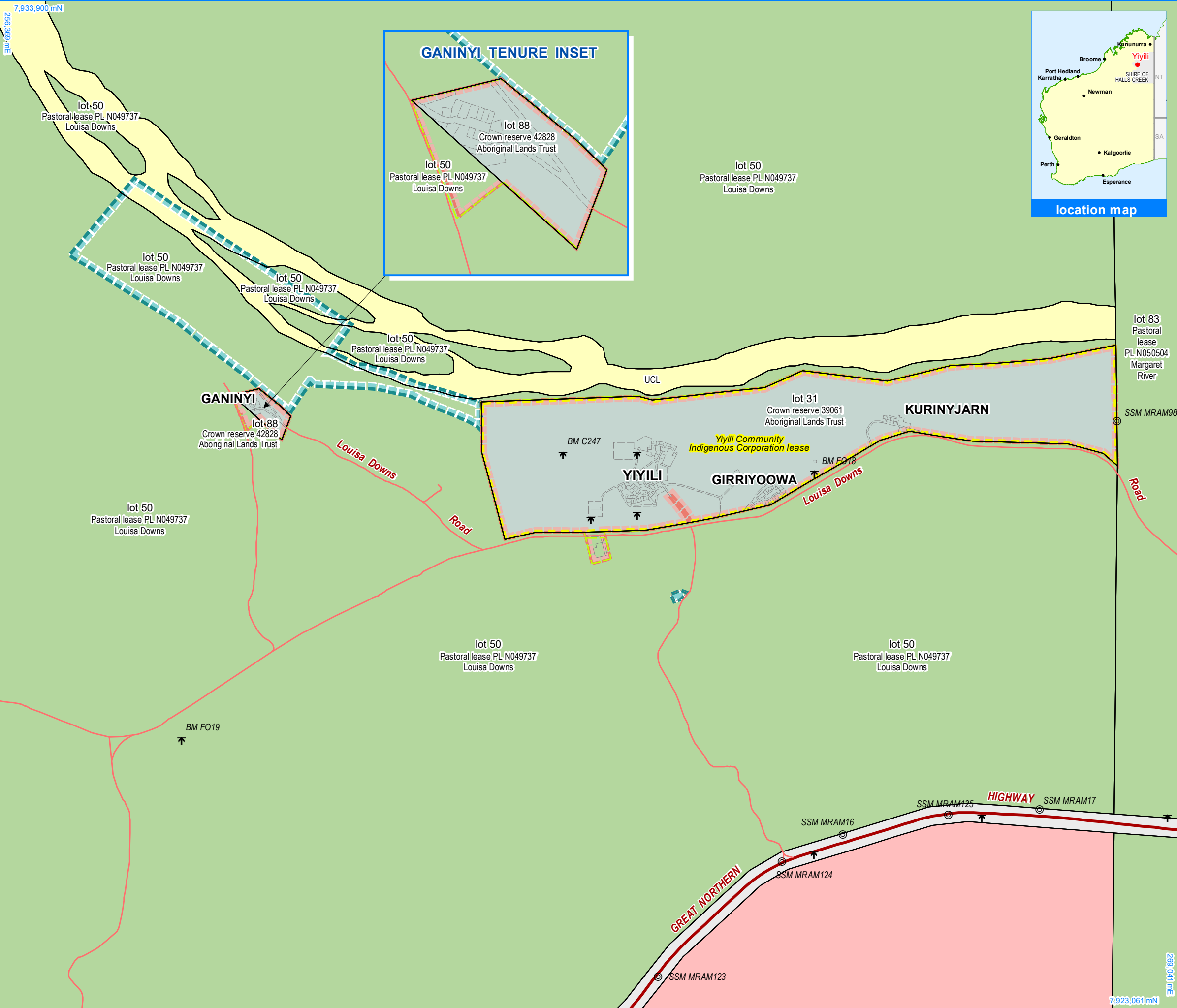
Settlement layout lots are not derived from calculated dimensions.

Map document : Kurinyjarn LP2 Amd4 - Living Area E.mxd
Produced by Land Use Planning, Department of Planning, Lands & Heritage on behalf of the Western Australian Planning Commission.
© Western Australian Planning Commission 2020



Yiyili Layout Plan 2 Background Report

Layout Plan 2 endorsement	
Community	2 December 2010
Local Government	21 April 2011
Traditional Owners	-
WAPC	29 September 2011
Amendment 4 endorsement	
WAPC	20 May 2020



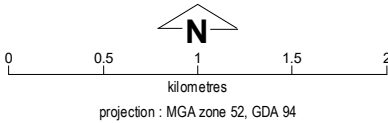
Yiyili Layout Plan 2 - Land Tenure Amendment 4

Land Tenure	
crown reserve	
crown reserve	- Aboriginal Lands Trust
Department of Biodiversity, Conservation & Attractions managed	
freehold	
leasehold	
other	
pastoral lease	
pastoral lease	- Aboriginal Lands Trust
unallocated crown land	
water reserve	

Geodetic Survey Marks	
⚓	bench mark & name
⊙	standard survey mark & name

Land Administration	
	cadastre
	lodged cadastre
	private lease
	recommended settlement zone
	settlement zone
	settlement layout (SL) lot

Roads	
	national highway
	state highway
	major road
	minor road



This Layout Plan does not constitute development approval. It is the responsibility of the developer to ensure that all relevant consents, approvals, licences and clearances are in place prior to commencing physical works on the site. Organisations responsible for such matters may include land owner, local government, incorporated community council, native title representative body, native title prescribed body corporate, Aboriginal Cultural Materials Committee, Environmental Protection Authority, state and federal government departments, and other relevant regulatory authorities. Go to the [PlanWA interactive planning map](#) to view Layout Plans with other spatial layers.

Base information supplied by the Western Australian Land Information Authority SLIP 1096-2018-1. Cadastre date 20/05/2020.
Settlement layout lots are not derived from calculated dimensions.
Map document : Yiyili LP2 Amd4 - Land Tenure E.mxd
Produced by Land Use Planning, Department of Planning, Lands & Heritage on behalf of the Western Australian Planning Commission.
© Western Australian Planning Commission 2020



Layout Plan 2 endorsement	
Community	2 December 2010
Local Government	21 April 2011
Traditional Owners	-
WAPC	29 September 2011
Amendment 4 endorsement	
WAPC	20 May 2020