

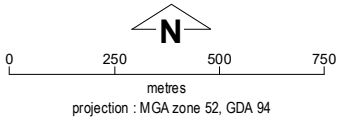
Warmun Layout Plan 2 - Land Tenure

Amendment 15



This Layout Plan does not constitute development approval. It is the responsibility of the developer to ensure that all relevant consents, approvals, licences and clearances are in place prior to commencing physical works on the site. Organisations responsible for such matters may include land owner, local government, incorporated community council, native title representative body, native title prescribed body corporate, Aboriginal Cultural Materials Committee, Environmental Protection Authority, state and federal government departments, and other relevant regulatory authorities. Go to the [PlanWA interactive planning map](#) to view Layout Plans with other spatial layers.

Layout Plan 2 endorsement	
Community	13 July 2005
Local Government	25 August 2005
Traditional Owners	-
WAPC	21 February 2006
Amendment 15 endorsement	
WAPC	7 December 2020



Base information and aerial imagery supplied by the Western Australian Land Information Authority SLIP 1180-2020-1. Extraction date of cadastre 7/12/2020. Settlement layout lots are not derived from calculated dimensions. Positional accuracy of aerial imagery is +/- 2 metres. Map document : Warmun LP2 Amd15 - Land Tenure E.mxd Produced by Land Use Planning, Department of Planning, Lands & Heritage, on behalf of the Western Australian Planning Commission. © Western Australian Planning Commission 2020

Land Tenure

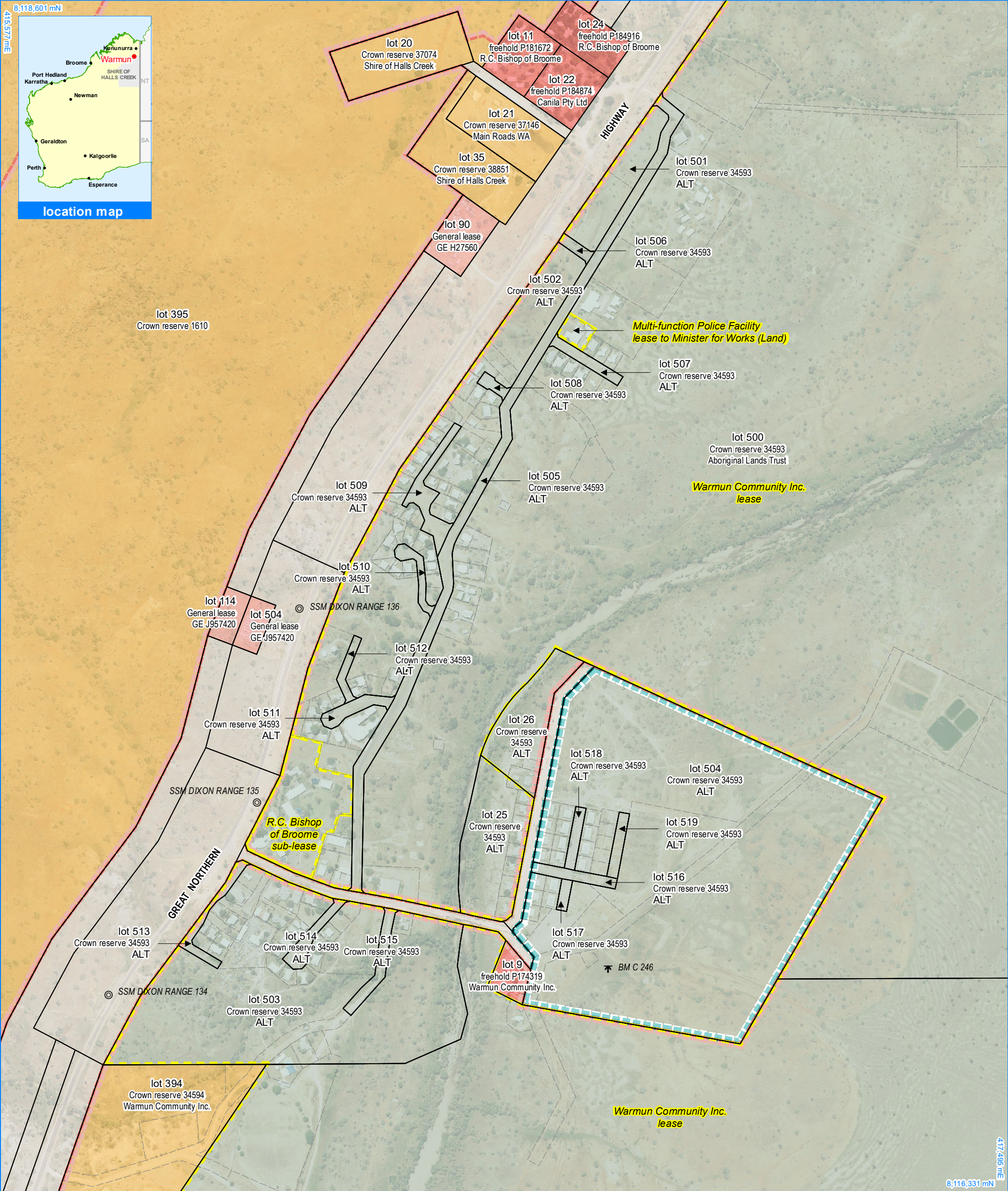
crown reserve	
crown reserve	- Aboriginal Lands Trust
Department of Biodiversity, Conservation & Attractions managed	
freehold	
leasehold	
other	
pastoral lease	
pastoral lease	- Aboriginal Lands Trust
unallocated crown land	
water reserve	

Geodetic Survey Marks

↑	bench mark & name
⊙	standard survey mark & name

Land Administration

	cadastre
	local government area
	lodged cadastre
	private lease
	recommended settlement zone
	settlement zone
	settlement layout (SL) lot & SL-lot number



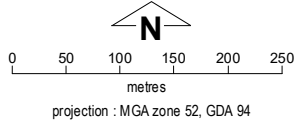
Warmun Layout Plan 2 - Land Tenure Closeup

Amendment 15



This Layout Plan does not constitute development approval. It is the responsibility of the developer to ensure that all relevant consents, approvals, licences and clearances are in place prior to commencing physical works on the site. Organisations responsible for such matters may include land owner, local government, incorporated community council, native title representative body, native title prescribed body corporate, Aboriginal Cultural Materials Committee, Environmental Protection Authority, state and federal government departments, and other relevant regulatory authorities. Go to the [PlanWA interactive planning map](#) to view Layout Plans with other spatial layers.

Layout Plan 2 endorsement	
Community	13 July 2005
Local Government	25 August 2005
Traditional Owners	-
WAPC	21 February 2006
Amendment 15 endorsement	
WAPC	7 December 2020



Base information and aerial imagery supplied by the Western Australian Land Information Authority SLIP 1180-2020-1. Extraction date of cadastre 7/12/2020. March 2019 aerial image. Settlement layout lots are not derived from calculated dimensions. Positional accuracy of aerial imagery is +/- 2 metres. Map document : Warmun LP2 Amd15 - Land Tenure Closeup E.mxd Produced by Land Use Planning, Department of Planning, Lands & Heritage, on behalf of the Western Australian Planning Commission. © Western Australian Planning Commission 2020

Land Tenure

crown reserve	
crown reserve	- Aboriginal Lands Trust
Department of Biodiversity, Conservation & Attractions managed	
freehold	
leasehold	
other	
pastoral lease	
pastoral lease	- Aboriginal Lands Trust
unallocated crown land	
water reserve	

Geodetic Survey Marks

↑	bench mark & name
©	standard survey mark & name

Land Administration

	cadastre
	lodged cadastre
	private lease
	recommended settlement zone
	settlement zone
	settlement layout (SL) lot