

# Wanarn Layout Plan 1 - Living Area Amendment 11

**Land Administration**

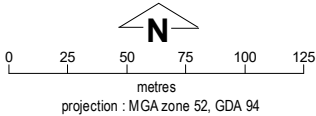
	cadastre
	lodged cadastral
	private lease
	recommended settlement zone
	settlement zone
	settlement layout (SL) lot & SL-lot number

**Exclusion Boundary** (see [SPP 3.2 Aboriginal Settlements Guideline](#))

	industry
	no-go area
	power station

**Land Use** (see [SPP 3.2 Aboriginal Settlements Guideline](#))

road reserve	road, essential service distribution network
residential	house, residential quarters
visitor camping	camping ground, traditional law and culture
community	child care premises, civic use, corrective institution, educational establishment, health care centre, worship building
open space	agriculture - extensive, essential service distribution network, traditional law and culture
rural	rural pursuit, agriculture - extensive, animal husbandry - intensive, agriculture - intensive, essential service distribution network
recreation	recreation, essential service distribution network
pedestrian access way	essential service distribution network, pedestrian access way
drinking water source protection area	any use permitted under the Drinking Water Source Protection Plan
waterway	agriculture - extensive, agriculture - intensive, traditional law and culture
commercial	art centre, caravan park, motel, office, service station, shop, tourism accommodation
industrial	fuel depot, industry, motor vehicle repair, storage, vehicle wrecking
public utility	electricity supply, essential service distribution network, drinking water supply, wastewater disposal, telecommunications, rubbish disposal



This Layout Plan does not constitute development approval. It is the responsibility of the developer to ensure that all relevant consents, approvals, licences and clearances are in place prior to commencing physical works on the site. Organisations responsible for such matters may include land owner, local government, incorporated community council, native title representative body, native title prescribed body corporate, Aboriginal Cultural Materials Committee, Environmental Protection Authority, state and federal government departments, and other relevant regulatory authorities. Go to the [PlanWA Interactive planning map](#) to view Layout Plans with other spatial layers.

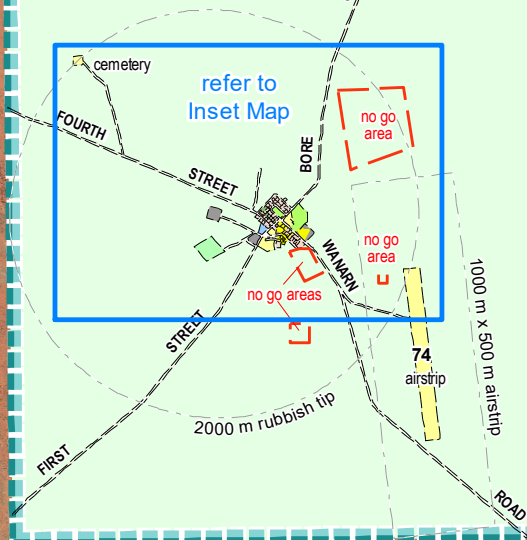
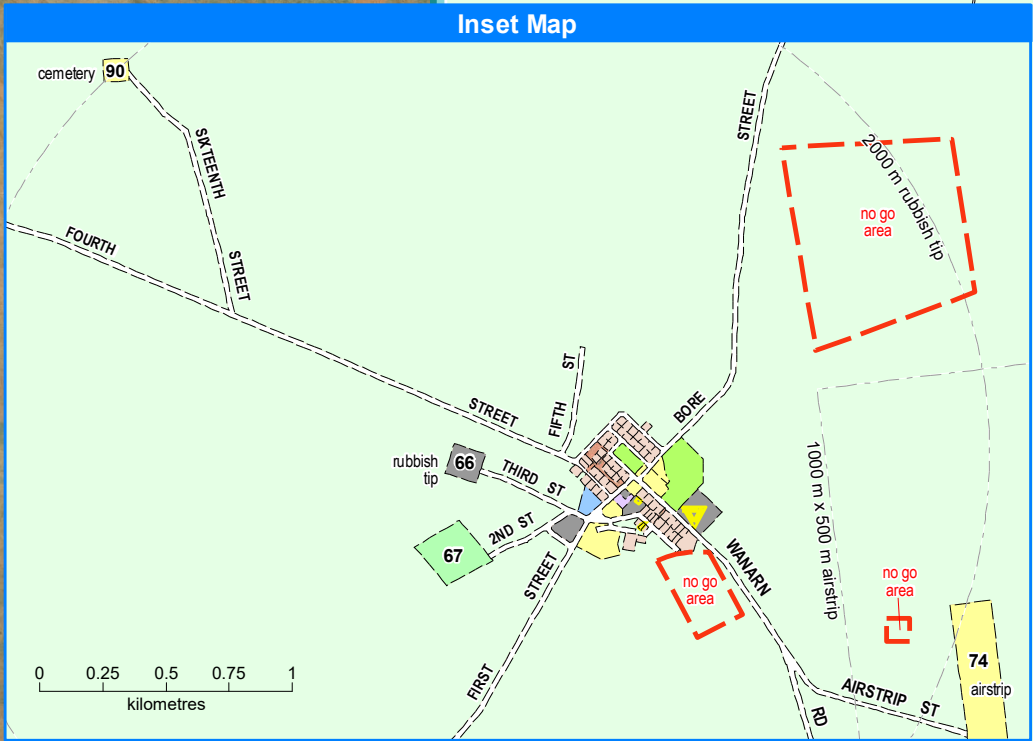
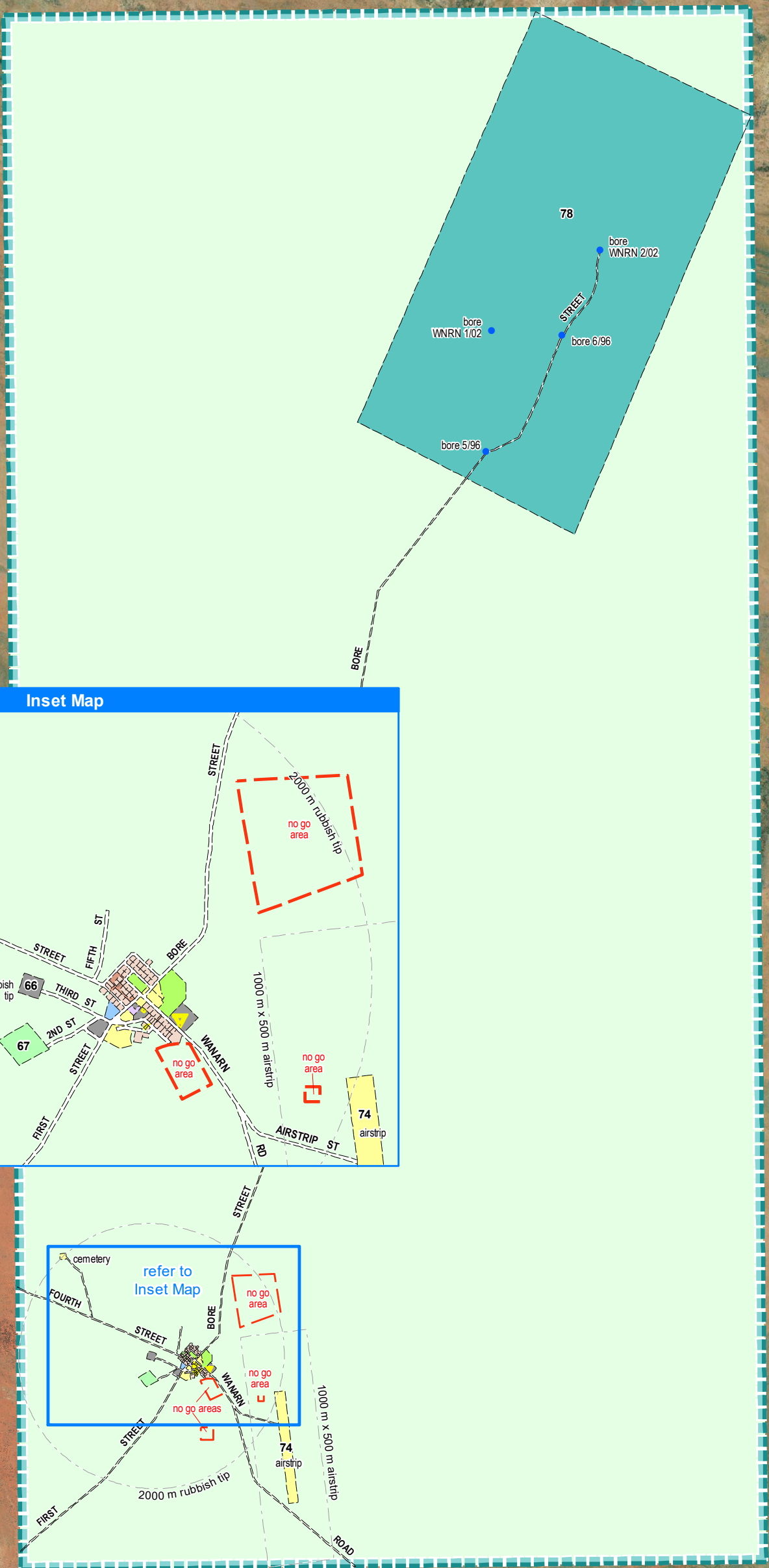
Base information and aerial imagery supplied by the Western Australian Land Information Authority SLIP 1096-2018-1. Cadastre date 9/11/2020. January 2020 aerial image. Drinking water source protection area derived from the Wanarn Drinking Water Source Protection Plan November 2010, commissioned by the Department of Communities. **Settlement layout lots are not derived from calculated dimensions. Positional accuracy of aerial imagery is +/- 2 metres.** Map document : Wanarn LP1 Amd11 - Living Area E.mxd Produced by Land Use Planning, Department of Planning, Lands & Heritage on behalf of the Western Australian Planning Commission. © Western Australian Planning Commission 2020



[Wanarn Layout Plan 1 Background Report](#)

Layout Plan 1 endorsement	
Community	1 December 2003
Local Government	4 March 2004
Traditional Owners	20 March 2013
WAPC	4 May 2004
Amendment 11 endorsement	
WAPC	9 November 2020





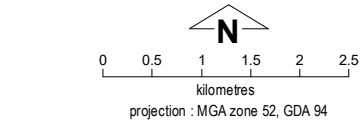
## Wanarn Layout Plan 1 - Context

## Amendment 11



This Layout Plan does not constitute development approval. It is the responsibility of the developer to ensure that all relevant consents, approvals, licences and clearances are in place prior to commencing physical works on the site. Organisations responsible for such matters may include land owner, local government, incorporated community council, native title representative body, native title prescribed body corporate, Aboriginal Cultural Materials Committee, Environmental Protection Authority, state and federal government departments, and other relevant regulatory authorities. Go to the [PlanWA interactive planning map](#) to view Layout Plans with other spatial layers.

Layout Plan 1 endorsement	
Community	1 December 2003
Local Government	4 March 2004
Traditional Owners	20 March 2013
WAPC	4 May 2004
Amendment 11 endorsement	
WAPC	9 November 2020



Base information and aerial imagery supplied by the Western Australian Land Information Authority SLIP 1096-2018-1. Extraction date of cadastre 9/11/2020. February 2007 & January 2020 aerial images. Drinking water source protection area derived from the Wanarn Drinking Water Source Protection Plan November 2010 commissioned by the Department of Communities (Housing). Settlement layout lots are not derived from calculated dimensions. Positional accuracy of aerial imagery is +/- 2 metres. Map document : Wanarn LP1 Amd11 - Context E.mxd Produced by Land Use Planning, Department of Planning, Lands & Heritage, on behalf of the Western Australian Planning Commission. © Western Australian Planning Commission 2020

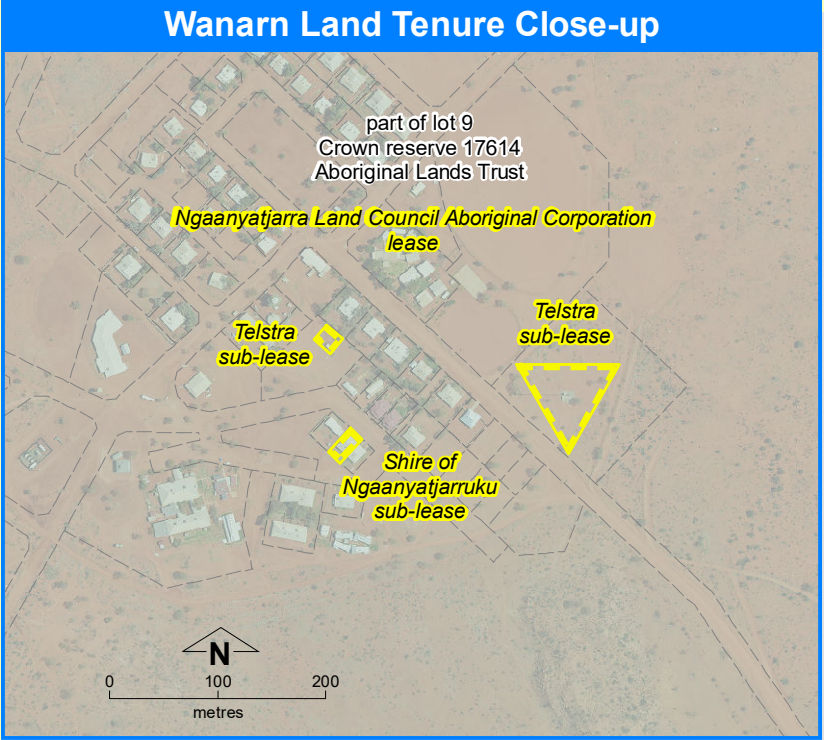
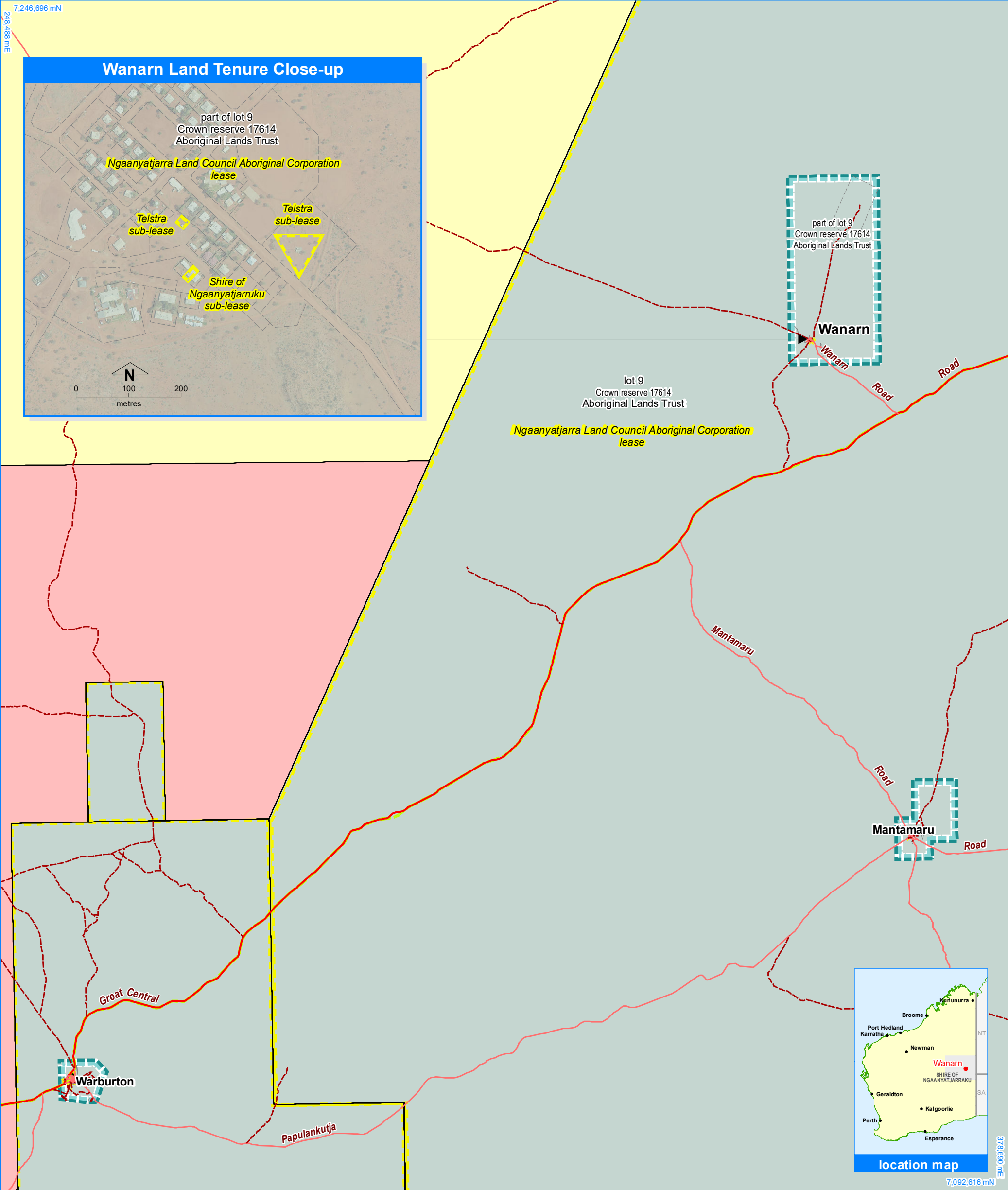
### Land Use

road reserve	road, essential service distribution network
residential	house, residential quarters
visitor camping	camping ground, traditional law and culture
community	child care premises, civic use, corrective institution, educational establishment, health care centre, worship building
open space	agriculture - extensive, essential service distribution network, traditional law and culture
rural	rural pursuit, agriculture - extensive, animal husbandry - intensive, agriculture - intensive, essential service distribution network
recreation	recreation, essential service distribution network
pedestrian access way	essential service distribution network, pedestrian access way
drinking water source protection area	any use permitted under the Drinking Water Source Protection Plan
waterway	agriculture - extensive, agriculture - intensive, traditional law and culture
commercial	art centre, caravan park, motel, office, service station, shop, tourism accommodation
industrial	fuel depot, industry, motor vehicle repair, storage, vehicle wrecking
public utility	electricity supply, essential service distribution network, drinking water supply, wastewater disposal, telecommunications, rubbish disposal

### Features

bore	bore
cadastre	cadastre
lodged cadastre	lodged cadastre
private lease	private lease
recommended settlement zone	recommended settlement zone
settlement zone	settlement zone
settlement layout (SL) lot & SL-lot number	settlement layout (SL) lot & SL-lot number
63	63
no-go area	no-go area
utility	utility



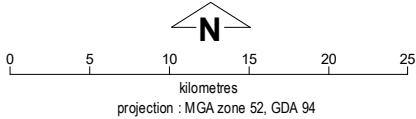


Wanarn Layout Plan 1 - Land Tenure Amendment 11



This Layout Plan does not constitute development approval. It is the responsibility of the developer to ensure that all relevant consents, approvals, licences and clearances are in place prior to commencing physical works on the site. Organisations responsible for such matters may include land owner, local government, incorporated community council, native title representative body, native title prescribed body corporate, Aboriginal Cultural Materials Committee, Environmental Protection Authority, state and federal government departments, and other relevant regulatory authorities. Go to the [PlanWA interactive planning map](#) to view Layout Plans with other spatial layers.

Layout Plan 1 endorsement	
Community	1 December 2003
Local Government	4 March 2004
Traditional Owners	20 March 2013
WAPC	4 May 2004
Amendment 11 endorsement	
WAPC	9 November 2020



Base information supplied by the Western Australian Land Information Authority SLIP 1096-2018-1. January 2020 aerial image. Extraction date of cadastre 9/11/2020. Settlement layout lots are not derived from calculated dimensions. Positional accuracy of aerial imagery is +/- 2 metres. Map document : Wanarn LP1 Amd11 - Land Tenure E.mxd Produced by Land Use Planning, Department of Planning, Lands & Heritage, on behalf of the Western Australian Planning Commission. © Western Australian Planning Commission 2020

Land Tenure

crown reserve	
crown reserve	- Aboriginal Lands Trust
Department of Biodiversity, Conservation & Attractions managed	
freehold	
leasehold	
other	
pastoral lease	
pastoral lease	- Aboriginal Lands Trust
unallocated crown land	
water reserve	

Land Administration

	cadastre
	lodged cadastre
	private lease
	recommended settlement zone
	settlement zone
	settlement layout (SL) lot

Roads

	national highway
	state highway
	major road
	minor road
	track