

Tjukurla Layout Plan 2 - Living Area Amendment 2

Features

bore

Land Administration

cadastre

lodged cadastre

private lease

recommended settlement zone

settlement zone

settlement layout (SL) lot & SL-lot number

Exclusion Boundary (see [SPP 3.2 Aboriginal Settlements Guideline](#))

chlorine gas storage

drinking water source wellhead protection zone

industry

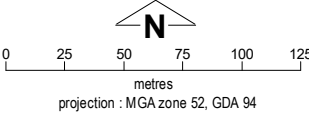
no-go area

power station

utility

Land Use (see [SPP 3.2 Aboriginal Settlements Guideline](#))

road reserve	road, essential service distribution network
residential	house, residential quarters
visitor camping	camping ground, traditional law and culture
community	child care premises, civic use, corrective institution, educational establishment, health care centre, worship building
open space	agriculture - extensive, essential service distribution network, traditional law and culture
rural	rural pursuit, agriculture - extensive, animal husbandry - intensive, agriculture - intensive, essential service distribution network
recreation	recreation, essential service distribution network
pedestrian access way	essential service distribution network, pedestrian access way
drinking water source protection area	any use permitted under the Drinking Water Source Protection Plan
waterway	agriculture - extensive, agriculture - intensive, traditional law and culture
commercial	art centre, caravan park, motel, office, service station, shop, tourism accommodation
industrial	fuel depot, industry, motor vehicle repair, storage, vehicle wrecking
public utility	electricity supply, essential service distribution network, drinking water supply, wastewater disposal, telecommunications, rubbish disposal



This Layout Plan does not constitute development approval. It is the responsibility of the developer to ensure that all relevant consents, approvals, licences and clearances are in place prior to commencing physical works on the site. Organisations responsible for such matters may include land owner, local government, incorporated community council, native title representative body, native title prescribed body corporate, Aboriginal Cultural Materials Committee, Environmental Protection Authority, state and federal government departments, and other relevant regulatory authorities. Go to the [PlanWA interactive planning map](#) to view Layout Plans with other spatial layers.

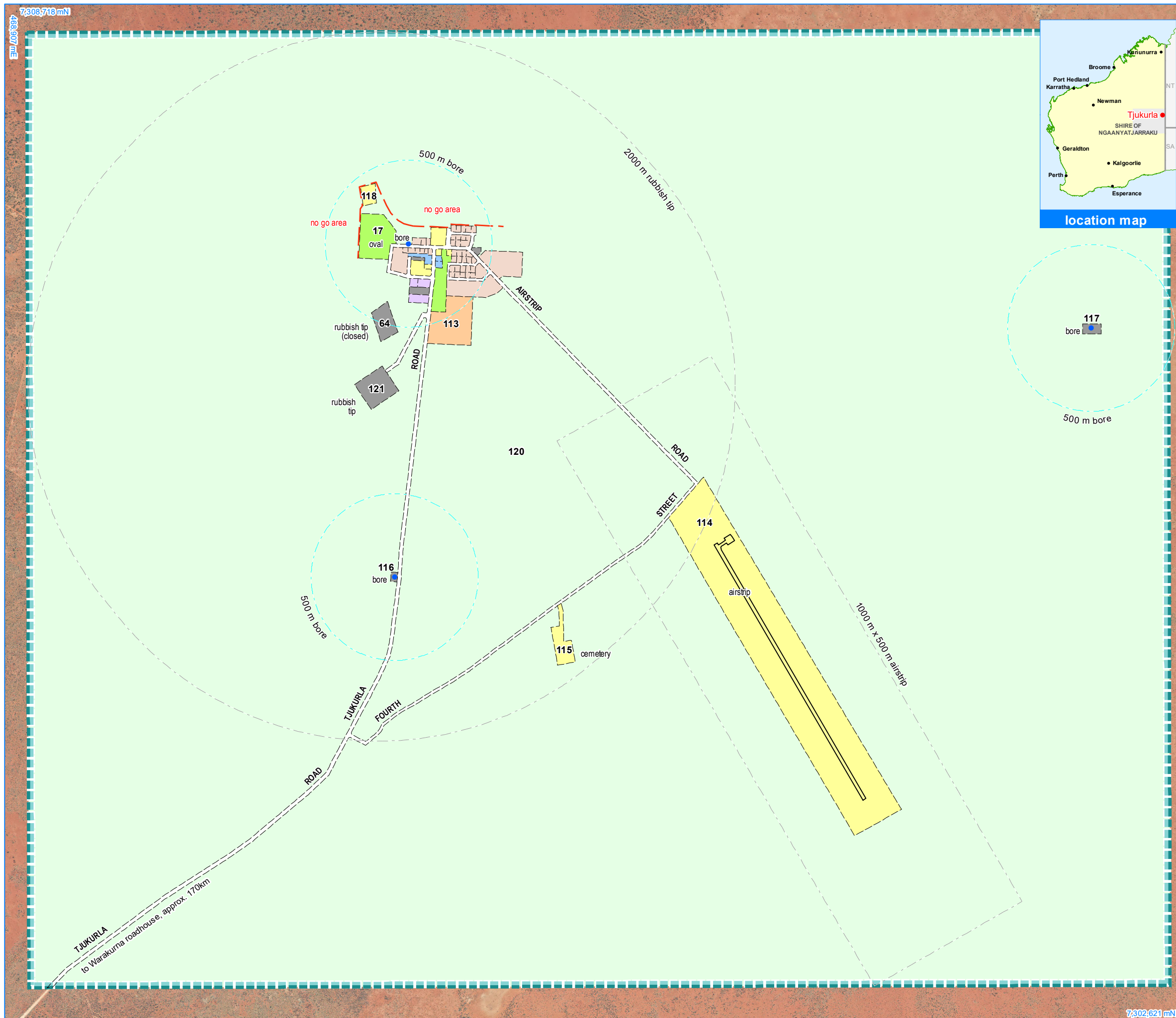
Base information and aerial imagery supplied by the Western Australian Land Information Authority SLIP 1096-2018-1. Cadastre date 16/09/2020. January 2020 aerial image. **Settlement layout lots are not derived from calculated dimensions.** **Positional accuracy of aerial imagery is +/- 2 metres.**

Map document: Tjukurla LP2 Amd2 - Living Area E.mxd
Produced by Land Use Planning, Department of Planning, Lands & Heritage on behalf of the Western Australian Planning Commission.
© Western Australian Planning Commission 2020



Tjukurla Layout Plan 2 Background Report

Layout Plan 2 endorsement	
Community	21 August 2014
Local Government	-
Traditional Owners	-
WAPC	16 December 2014
Amendment 2 endorsement	
WAPC	21 September 2020








Tjukurla Layout Plan 2 - Context Amendment 2

Features

- _____ ● bore
as-constructed miscellaneous feature

Land Administration

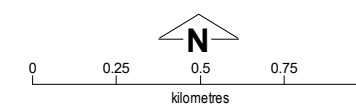
- | | |
|---|--|
|  | cadastre |
|  | lodged cadastre |
|  | private lease |
|  | recommended settlement zone |
|  | settlement zone |
|  | settlement layout (SL) lot & SL-lot number |

Exclusion Boundary

- - - - - drinking water source wellhead protection zone
 - - - - - no-go area
 - - - - - utility

Land Use

road reserve	road, essential service distribution network
residential	house, residential quarters
visitor camping	camping ground, traditional law and culture
community	child care premises, civic use, corrective institution, educational establishment, health care centre, worship building
open space	agriculture - extensive, essential service distribution network, traditional law and culture
rural	rural pursuit, agriculture - extensive, animal husbandry - intensive, agriculture - intensive, essential service distribution network
recreation	recreation, essential service distribution network
pedestrian access way	essential service distribution network, pedestrian access way
drinking water source protection area	any use permitted under the Drinking Water Source Protection Plan
waterway	agriculture – extensive, agriculture – intensive, traditional law and culture
commercial	art centre, caravan park, motel, office, service station, shop, tourism accommodation
industrial	fuel depot, industry, motor vehicle repair, storage, vehicle wrecking
public utility	electricity supply, essential service distribution network, drinking water supply, wastewater disposal, telecommunications, rubbish disposal



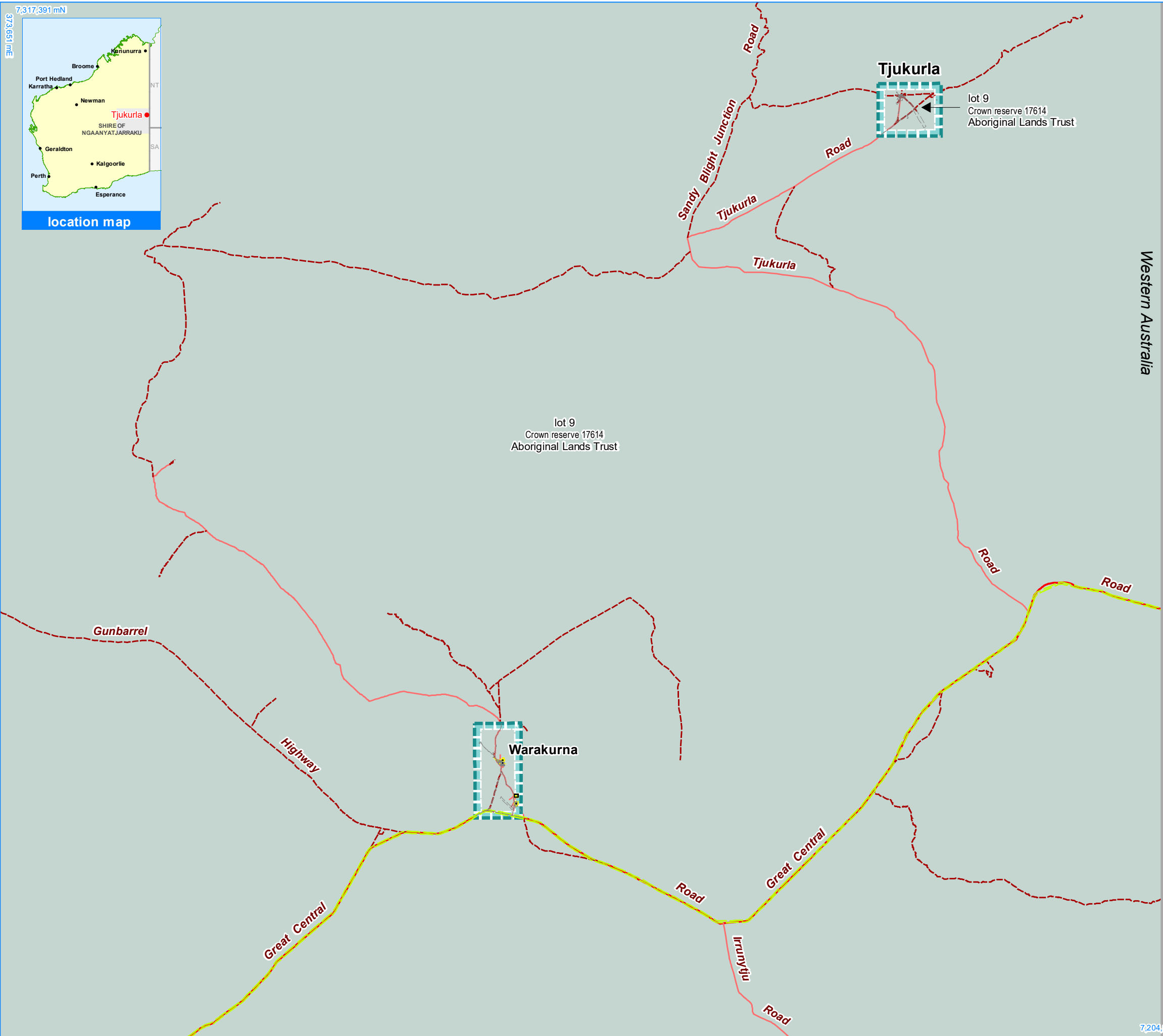
This Layout Plan does not constitute development approval. It is the responsibility of the developer to ensure that all relevant consents, approvals, licences and clearances are in place prior to commencing physical works on the site. Organisations responsible for such matters may include land owner, local government, incorporated community council, native title representative body, native title prescribed body corporate, Aboriginal Cultural Materials Committee, Environmental Protection Authority, state and federal government departments, and other relevant regulatory authorities. Go to the [PlanWA interactive planning map](#) to view Layout Plans from other spatial layers.

Base information and aerial imagery supplied by the Western Australian Land Information Authority SLIP 1096-2018-1. Cadastre date 16/09/2020. January 2020 aerial image.

Settlement layout lots are not derived from calculated dimensions.
Positional accuracy of aerial imagery is +/- 2 metres.
Map document : Tjukurfa LP2 Amd2 - Context E.mxd
Produced by Land Use Planning, Department of Planning, Lands & Heritage on behalf of
the Western Australian Planning Commission.



Layout Plan 2 endorsement	
Community	21 August 2014
Local Government	-
Traditional Owners	-
WAPC	16 December 2014
Amendment 2 endorsement	
WAPC	21 September 2020

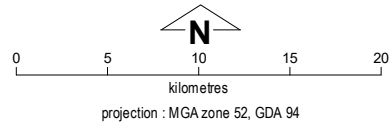


Tjukurla Layout Plan 2 - Land Tenure Amendment 2

Land Tenure	
crown reserve	
crown reserve	- Aboriginal Lands Trust
Department of Biodiversity, Conservation & Attractions managed	
freehold	
leasehold	
other	
pastoral lease	
pastoral lease	- Aboriginal Lands Trust
unallocated crown land	
water reserve	

Land Administration	
state/territory border	
cadastre	
lodged cadastre	
private lease	
recommended settlement zone	
settlement zone	
settlement layout (SL) lot	

Roads	
national highway	
state highway	
major road	
minor road	
track	



This Layout Plan does not constitute development approval. It is the responsibility of the developer to ensure that all relevant consents, approvals, licences and clearances are in place prior to commencing physical works on the site. Organisations responsible for such matters may include land owner, local government, incorporated community council, native title representative body, native title prescribed body corporate, Aboriginal Cultural Materials Committee, Environmental Protection Authority, state and federal government departments, and other relevant regulatory authorities. Go to the [PlanWA interactive planning map](#) to view Layout Plans with other spatial layers.

Base information supplied by the Western Australian Land Information Authority SLIP 1096-2018-1. Cadastre date 16/09/2020. Settlement layout lots are not derived from calculated dimensions. Positional accuracy of aerial imagery is +/- 2 metres. Map document : Tjukurla LP2 Amd2 - Land Tenure E.mxd Produced by Land Use Planning, Department of Planning, Lands & Heritage on behalf of the Western Australian Planning Commission. © Western Australian Planning Commission 2020



Layout Plan 2 endorsement	
Community	21 August 2014
Local Government	-
Traditional Owners	-
WAPC	16 December 2014
Amendment 2 endorsement	
WAPC	21 September 2020