

# Mud Springs Layout Plan 1 - Living Area Amendment 2

### Features

- bore
- watercourse

### Land Administration

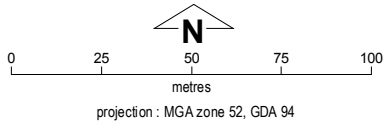
- cadastre
- lodged cadastre
- private lease
- recommended settlement zone
- settlement zone
- settlement layout (SL) lot & SL-lot number

### Exclusion Boundary (see [Aboriginal Settlements Guideline 3](#))

- drinking water source wellhead protection zone
- industry
- wastewater

### Land Use (see [Aboriginal Settlements Guideline 1](#))

|                                       |  |
|---------------------------------------|--|
| road reserve                          | road, essential service distribution network   |
| residential                           | house, residential quarters  |
| visitor camping                       | camping ground, traditional law and culture  |
| community                             | child care premises, civic use, corrective institution, educational establishment, health care centre, worship building                      |
| open space                            | agriculture - extensive, essential service distribution network, traditional law and culture   |
| rural                                 | rural pursuit, agriculture - extensive, animal husbandry - intensive, agriculture - intensive, essential service distribution network        |
| recreation                            | recreation, essential service distribution network   |
| pedestrian access way                 | essential service distribution network, pedestrian access way  |
| drinking water source protection area | any use permitted under the Drinking Water Source Protection Plan  |
| waterway                              | agriculture - extensive, agriculture - intensive, traditional law and culture  |
| commercial                            | art centre, caravan park, motel, office, service station, shop, tourism accommodation  |
| industrial                            | fuel depot, industry, motor vehicle repair, storage, vehicle wrecking  |
| public utility                        | electricity supply, essential service distribution network, drinking water supply, wastewater disposal, telecommunications, rubbish disposal |



This Layout Plan does not constitute development approval. It is the responsibility of the developer to ensure that all relevant consents, approvals, licences and clearances are in place prior to commencing physical works on the site. Organisations responsible for such matters may include land owner, local government, incorporated community council, native title representative body, native title prescribed body corporate, Aboriginal Cultural Materials Committee, Environmental Protection Authority, state and federal government departments, and other relevant regulatory authorities. Go to the [PlanWA interactive planning map](#) to view Layout Plans with other spatial layers.

Base information and aerial imagery supplied by the Western Australian Land Information Authority SLIP 1096-2018-1. Cadastre date 31/01/2020. May 2019 aerial image. Settlement layout lots are not derived from calculated dimensions. Map document : Mud Springs LP1 Amd2 - Living Area.mxd Produced by Land Use Planning, Department of Planning, Lands & Heritage on behalf of the Western Australian Planning Commission. © Western Australian Planning Commission 2020

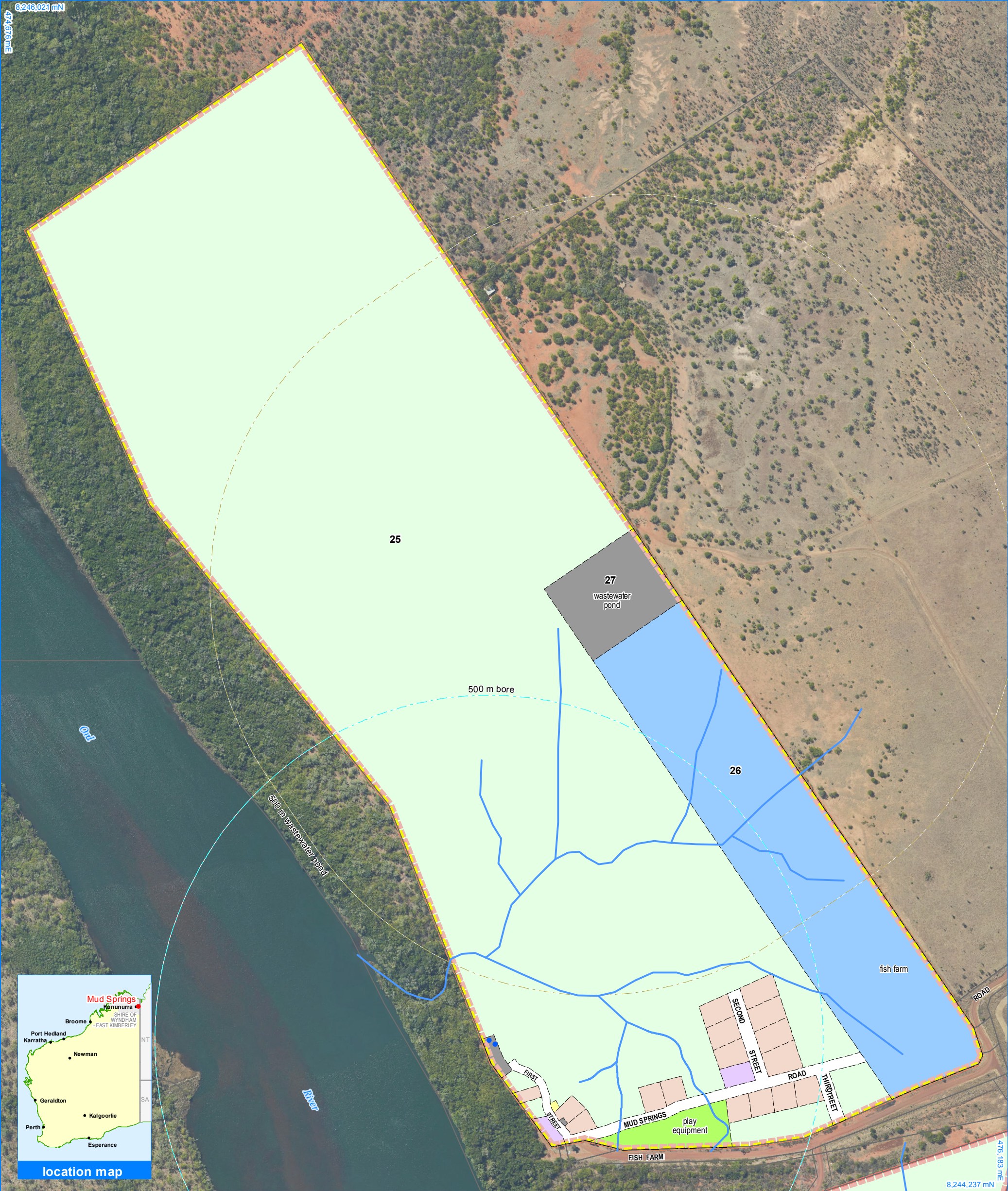


### Mud Springs Layout Plan 1 Background Report

| Layout Plan 1 endorsement |                   |
|---------------------------|-------------------|
| Community                 | 16 November 2010  |
| Local Government          | 21 June 2011      |
| Traditional Owners        | 17 January 2011   |
| WAPC                      | 29 September 2011 |
| Amendment 2 endorsement   |                   |
| WAPC                      | 17 January 2020   |



47°07'03"E  
8,246,024 mN



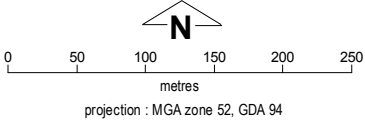
## Mud Springs Layout Plan 1 - Context

## Amendment 2



This Layout Plan does not constitute development approval. It is the responsibility of the developer to ensure that all relevant consents, approvals, licences and clearances are in place prior to commencing physical works on the site. Organisations responsible for such matters may include land owner, local government, incorporated community council, native title representative body, native title prescribed body corporate, Aboriginal Cultural Materials Committee, Environmental Protection Authority, state and federal government departments, and other relevant regulatory authorities. Go to the [PlanWA interactive planning map](#) to view Layout Plans with other spatial layers.

| Layout Plan 1 endorsement |                   |
|---------------------------|-------------------|
| Community                 | 16 November 2010  |
| Local Government          | 21 June 2011      |
| Traditional Owners        | 17 January 2011   |
| WAPC                      | 29 September 2011 |
| Amendment 2 endorsement   |                   |
| WAPC                      | 17 January 2020   |



Base information and aerial imagery supplied by the Western Australian Land Information Authority SLIP 1096-2018-1. May 2019 aerial image. Extraction date of cadastre 31/01/2020.  
**Settlement layout lots are not derived from calculated dimensions.**  
Map document : Mud Springs LP1 Amd2 - Context.mxd  
Produced by Land Use Planning, Department of Planning, Lands & Heritage, on behalf of the Western Australian Planning Commission.  
© Western Australian Planning Commission 2020

### Land Use

|                                       |  |
|---------------------------------------|--|
| road reserve                          | road, essential service distribution network   |
| residential                           | house, residential quarters  |
| visitor camping                       | camping ground, traditional law and culture  |
| community                             | child care premises, civic use, corrective institution, educational establishment, health care centre, worship building                      |
| open space                            | agriculture - extensive, essential service distribution network, traditional law and culture   |
| rural                                 | rural pursuit, agriculture - extensive, animal husbandry - intensive, agriculture - intensive, essential service distribution network        |
| recreation                            | recreation, essential service distribution network   |
| pedestrian access way                 | essential service distribution network, pedestrian access way  |
| drinking water source protection area | any use permitted under the Drinking Water Source Protection Plan  |
| waterway                              | agriculture - extensive, agriculture - intensive, traditional law and culture  |
| commercial                            | art centre, caravan park, motel, office, service station, shop, tourism accommodation  |
| industrial                            | fuel depot, industry, motor vehicle repair, storage, vehicle wrecking  |
| public utility                        | electricity supply, essential service distribution network, drinking water supply, wastewater disposal, telecommunications, rubbish disposal |

### Features

- bore
- watercourse

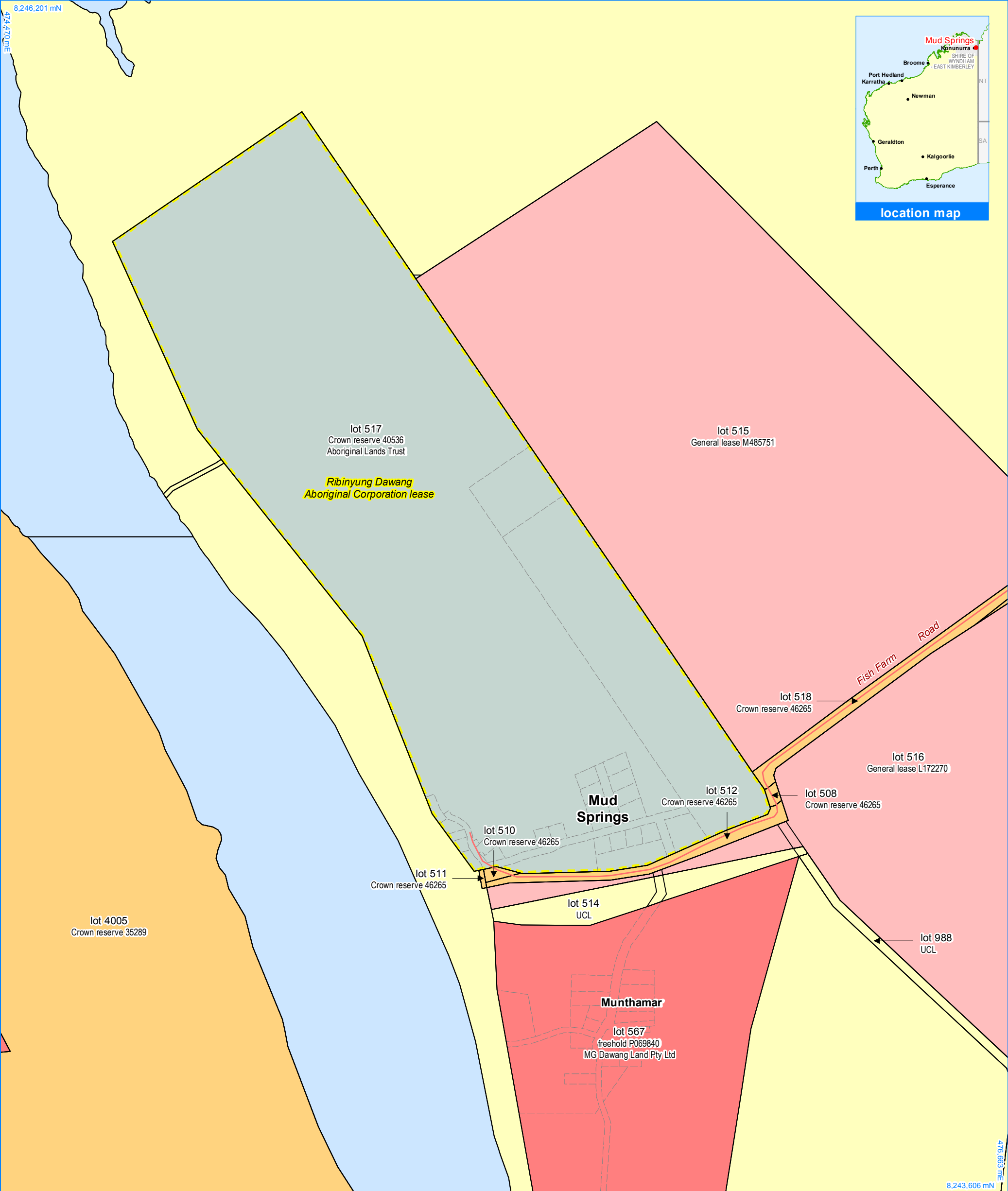
### Land Administration

- cadastre
- lodged cadastre
- private lease
- recommended settlement zone
- settlement zone
- settlement layout (SL) lot & SL-lot number

### Exclusion Boundary

- drinking water source wellhead protection zone
- wastewater





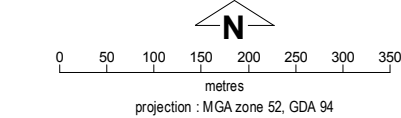
## Mud Springs Layout Plan 1 - Land Tenure

## Amendment 2



This Layout Plan does not constitute development approval. It is the responsibility of the developer to ensure that all relevant consents, approvals, licences and clearances are in place prior to commencing physical works on the site. Organisations responsible for such matters may include land owner, local government, incorporated community council, native title representative body, native title prescribed body corporate, Aboriginal Cultural Materials Committee, Environmental Protection Authority, state and federal government departments, and other relevant regulatory authorities. Go to the [PlanWA interactive planning map](#) to view Layout Plans with other spatial layers.

| Layout Plan 1 endorsement |                   |
|---------------------------|-------------------|
| Community                 | 16 November 2010  |
| Local Government          | 21 June 2011      |
| Traditional Owners        | 17 January 2011   |
| WAPC                      | 29 September 2011 |
| Amendment 2 endorsement   |                   |
| WAPC                      | 17 January 2020   |



Base information supplied by the Western Australian Land Information Authority SLIP 1096-2018-1. Extraction date of cadastre 31/01/2020. Settlement layout lots are not derived from calculated dimensions. Map document : Mud Springs LP1 Amd2 - Land Tenure.mxd Produced by Land Use Planning, Department of Planning, Lands & Heritage, on behalf of the Western Australian Planning Commission. © Western Australian Planning Commission 2020

### Land Tenure

|  |                          |
|--|--------------------------|
| crown reserve  |                          |
| crown reserve  | - Aboriginal Lands Trust |
| Department of Biodiversity, Conservation & Attractions managed |                          |
| freehold   |                          |
| leasehold  |                          |
| other  |                          |
| pastoral lease   |                          |
| pastoral lease   | - Aboriginal Lands Trust |
| unallocated crown land   |                          |
| water reserve  |                          |

### Geodetic Survey Marks

|   |                             |
|---|-----------------------------|
| ⬆ | bench mark & name           |
| ⊙ | standard survey mark & name |

### Land Administration

|  |                             |
|--|-----------------------------|
|  | cadastre                    |
|  | lodged cadastre             |
|  | private lease               |
|  | recommended settlement zone |
|  | settlement zone             |
|  | settlement layout (SL) lot  |

### Roads

|  |                  |
|--|------------------|
|  | national highway |
|  | state highway    |
|  | major road       |
|  | minor road       |
|  | track            |