

7,139,108 mN
366,734 mE



Mantamaru Layout Plan 2 - Living Area Amendment 4

Features

- production bore

Land Administration

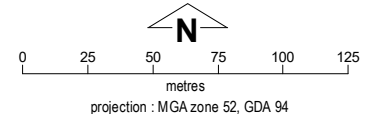
- cadastre
- lodged cadastre
- private lease
- recommended settlement zone
- settlement zone
- settlement layout (SL) lot & SL-lot number

Exclusion Boundary (see [SPP 3.2 Aboriginal Settlements Guideline](#))

- chlorine gas storage
- drinking water source wellhead protection zone
- industry
- wastewater

Land Use (see [SPP 3.2 Aboriginal Settlements Guideline](#))

road reserve	road, essential service distribution network
residential	house, residential quarters
visitor camping	camping ground, traditional law and culture
community	child care premises, civic use, corrective institution, educational establishment, health care centre, worship building
open space	agriculture - extensive, essential service distribution network, traditional law and culture
rural	rural pursuit, agriculture - extensive, animal husbandry - intensive, agriculture - intensive, essential service distribution network
recreation	recreation, essential service distribution network
pedestrian access way	essential service distribution network, pedestrian access way
drinking water source protection area	any use permitted under the Drinking Water Source Protection Plan
waterway	agriculture - extensive, agriculture - intensive, traditional law and culture
commercial	art centre, caravan park, motel, office, service station, shop, tourism accommodation
industrial	fuel depot, industry, motor vehicle repair, storage, vehicle wrecking
public utility	electricity supply, essential service distribution network, drinking water supply, wastewater disposal, telecommunications, rubbish disposal



This Layout Plan does not constitute development approval. It is the responsibility of the developer to ensure that all relevant consents, approvals, licences and clearances are in place prior to commencing physical works on the site. Organisations responsible for such matters may include land owner, local government, incorporated community council, native title representative body, native title prescribed body corporate, Aboriginal Cultural Materials Committee, Environmental Protection Authority, state and federal government departments, and other relevant regulatory authorities. Go to the [PlanWA interactive planning map](#) to view Layout Plans with other spatial layers. Base information and aerial imagery supplied by the Western Australian Land Information Authority SLIP 1096-2018-1. Cadastre date 22/10/2020. January 2020 aerial image. Drinking water source protection area derived from the Mantamaru (Jameson) Drinking Water Source Protection Plan November 2010 commissioned by the Department of Communities. **Settlement layout lots are not derived from calculated dimensions. Positional accuracy of aerial imagery is +/- 2 metres.** Map document : Mantamaru LP2 Amd4 - Living Area E.mxd Produced by Land Use Planning, Department of Planning, Lands & Heritage on behalf of the Western Australian Planning Commission. © Western Australian Planning Commission 2020

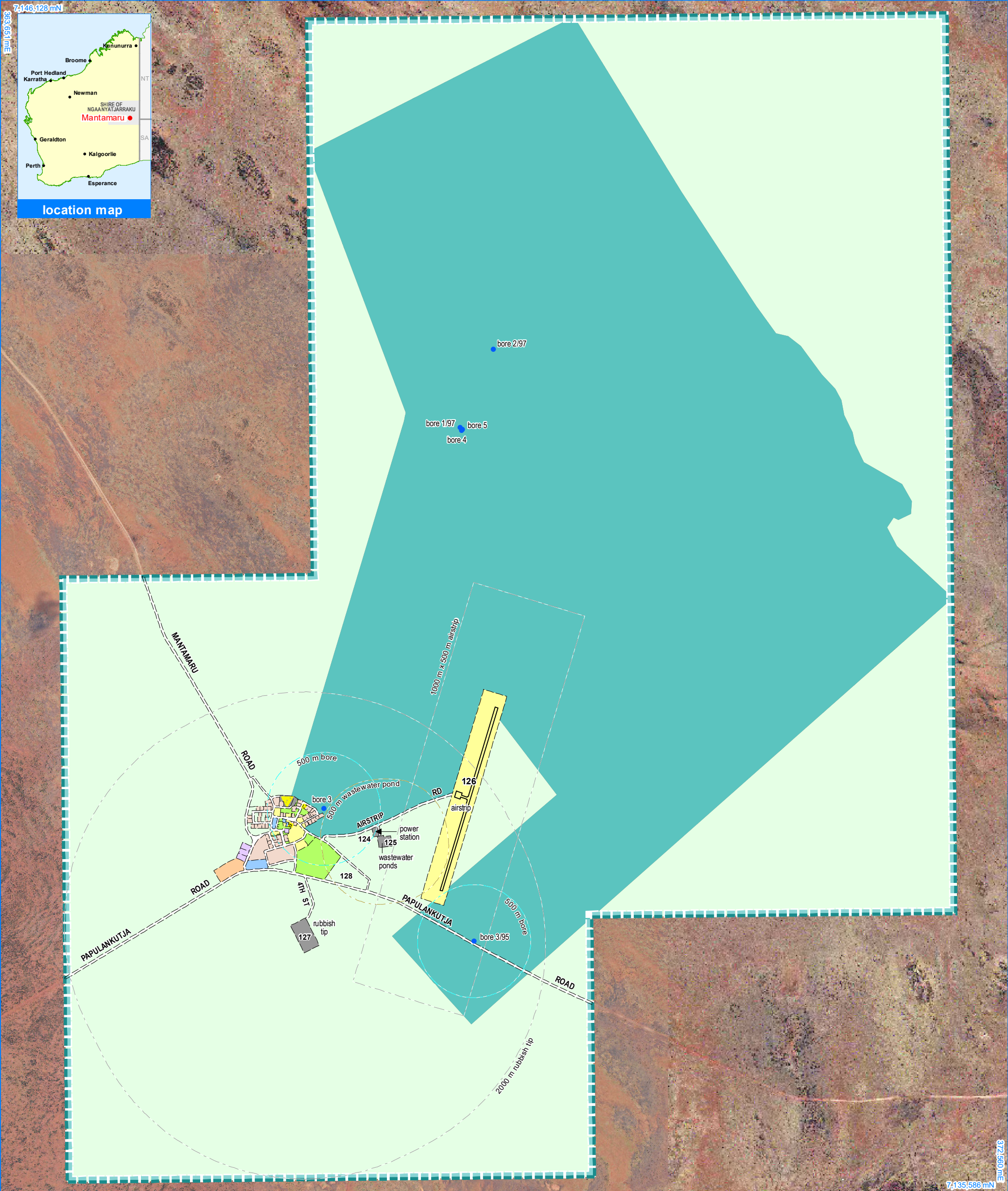


Mantamaru Layout Plan 2 Background Report

Layout Plan 2 endorsement	
Community	7 October 2008
Local Government	-
Traditional Owners	-
WAPC	26 March 2013
Amendment 4 endorsement	
WAPC	23 October 2020

366,653 mE

7,138,322 mN



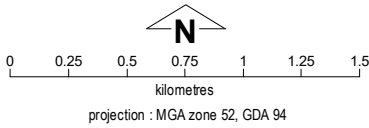
Mantamaru Layout Plan 2 - Context

Amendment 4



This Layout Plan does not constitute development approval. It is the responsibility of the developer to ensure that all relevant consents, approvals, licences and clearances are in place prior to commencing physical works on the site. Organisations responsible for such matters may include land owner, local government, incorporated community council, native title representative body, native title prescribed body corporate, Aboriginal Cultural Materials Committee, Environmental Protection Authority, state and federal government departments, and other relevant regulatory authorities. Go to the [PlanWA interactive planning map](#) to view Layout Plans with other spatial layers.

Layout Plan 2 endorsement	
Community	7 October 2008
Local Government	-
Traditional Owners	-
WAPC	26 March 2013
Amendment 4 endorsement	
WAPC	23 October 2020



Base information and aerial imagery supplied by the Western Australian Land Information Authority SLIP 1096-2018-1, June 2002 and January 2020 aerial images. Extraction date of cadastre 22/10/2020. Drinking water source protection area derived from the Mantamaru (Jameson) Drinking Water Source Protection Plan November 2010 commissioned by the Department of Communities (Housing). **Settlement layout lots are not derived from calculated dimensions. Positional accuracy of aerial imagery is +/- 2 metres.** Map document : Mantamaru LP2 Amd4 - Context E.mxd Produced by Land Use Planning, Department of Planning, Lands & Heritage, on behalf of the Western Australian Planning Commission. © Western Australian Planning Commission 2020

Land Use

road reserve	road, essential service distribution network
residential	house, residential quarters
visitor camping	camping ground, traditional law and culture
community	child care premises, civic use, corrective institution, educational establishment, health care centre, worship building
open space	agriculture - extensive, essential service distribution network, traditional law and culture
rural	rural pursuit, agriculture - extensive, animal husbandry - intensive, agriculture - intensive, essential service distribution network
recreation	recreation, essential service distribution network
pedestrian access way	essential service distribution network, pedestrian access way
drinking water source protection area	any use permitted under the Drinking Water Source Protection Plan
waterway	agriculture - extensive, agriculture - intensive, traditional law and culture
commercial	art centre, caravan park, motel, office, service station, shop, tourism accommodation
industrial	fuel depot, industry, motor vehicle repair, storage, vehicle wrecking
public utility	electricity supply, essential service distribution network, drinking water supply, wastewater disposal, telecommunications, rubbish disposal

Features

●	production bore
—	as-constructed miscellaneous feature

Land Administration

—	cadastre
—	lodged cadastre
—	private lease
—	recommended settlement zone
—	settlement zone
63	settlement layout (SL) lot & SL-lot number

Exclusion Boundary

—	drinking water source wellhead protection zone
—	utility
—	wastewater

