

Lombadina Layout Plan 3 - Living Area Amendment 11

Features

production bore

Land Administration

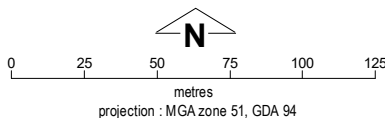
- cadastre
- lodged cadastre
- private lease
- recommended settlement zone
- settlement zone
- settlement layout (SL) lot & SL-lot number

Exclusion Boundary (see SPP 3.2 Aboriginal Settlements Guideline)

- drinking water source wellhead protection zone
- industry
- no go
- wastewater

Land Use (see SPP 3.2 Aboriginal Settlements Guideline)

road reserve	road, essential service distribution network
residential	house, residential quarters
visitor camping	camping ground, traditional law and culture
community	child care premises, civic use, corrective institution, educational establishment, health care centre, worship building
open space	agriculture - extensive, essential service distribution network, traditional law and culture
rural	rural pursuit, agriculture - extensive, animal husbandry - intensive, agriculture - intensive, essential service distribution network
recreation	recreation, essential service distribution network
pedestrian access way	essential service distribution network, pedestrian access way
drinking water source protection area	any use permitted under the Drinking Water Source Protection Plan
waterway	agriculture - extensive, agriculture - intensive, traditional law and culture
commercial	art centre, caravan park, motel, office, service station, shop, tourism accommodation
industrial	fuel depot, industry, motor vehicle repair, storage, vehicle wrecking
public utility	electricity supply, essential service distribution network, drinking water supply, wastewater disposal, telecommunications, rubbish disposal



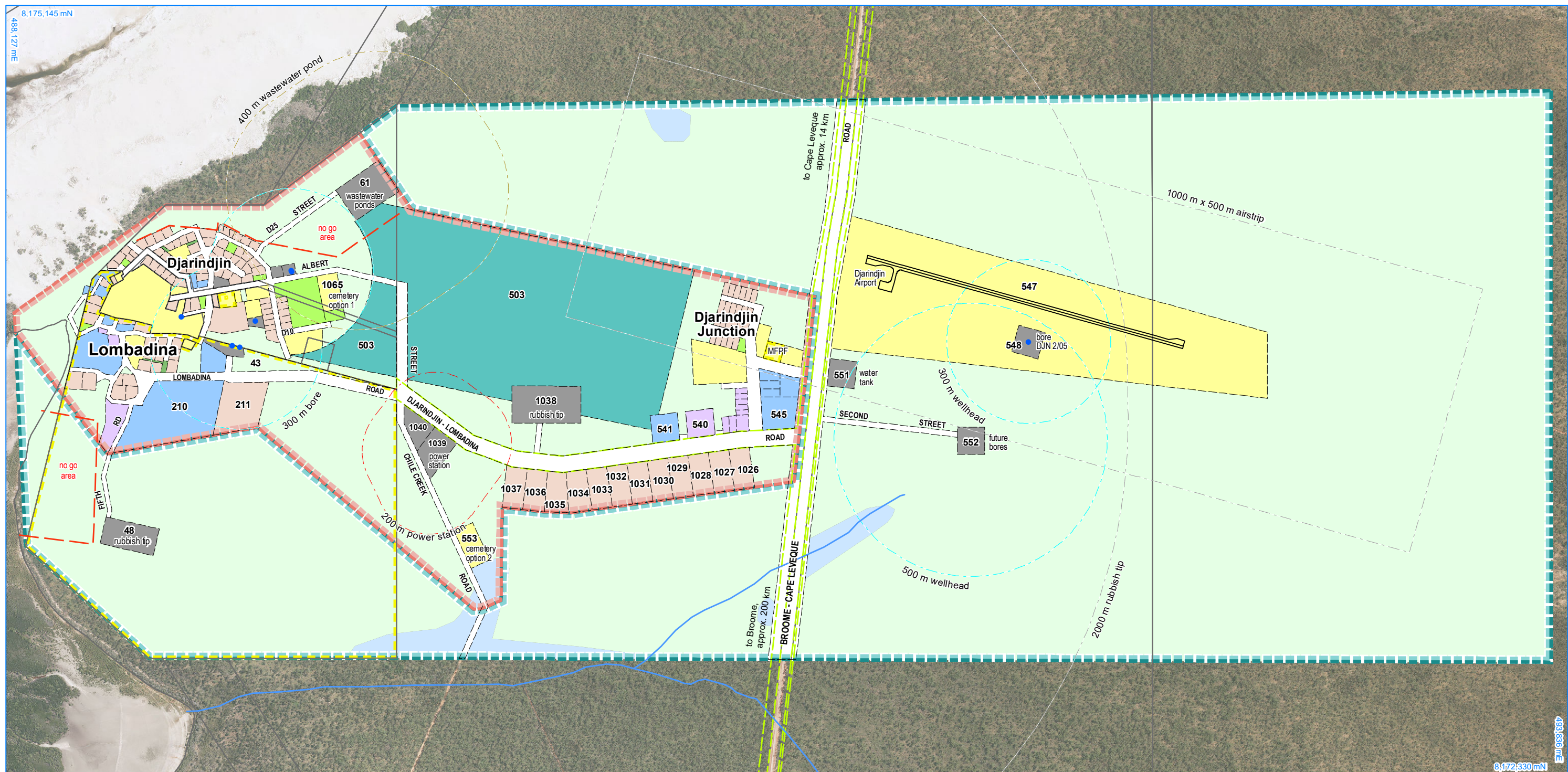
This Layout Plan does not constitute development approval. It is the responsibility of the developer to ensure that all relevant consents, approvals, licences and clearances are in place prior to commencing physical works on the site. Organisations responsible for such matters may include land owner, local government, incorporated community council, native title representative body, native title prescribed body corporate, Aboriginal Cultural Materials Committee, Environmental Protection Authority, state and federal government departments, and other relevant regulatory authorities. Go to the [PlanWA interactive planning map](#) to view Layout Plans with other spatial layers.

Base information and aerial imagery supplied by the Western Australian Land Information Authority SLIP 1096-2018-1. Cadastre date 11/11/2020. April 2019 aerial image. Drinking water source protection area derived from the Djarindjin Community Drinking Water Source Protection Plan October 2010, commissioned by the Dept. of Communities (Housing). All construction and developer proponents to refer to the 'Coastal Vulnerability Assessments for Localities in the Shire of Broome - Bardi Jawi Final Report'. **Settlement layout lots are not derived from calculated dimensions.** **Positional accuracy of aerial imagery is +/- 2 metres.** Map document : Lombadina LP3 Ratified Draft 11 - Living Area E.mxd Produced by Land Use Planning, Department of Planning, Lands & Heritage on behalf of the Western Australian Planning Commission. © Western Australian Planning Commission 2020



Lombadina LP3 Ratified Draft Background Report

Layout Plan X endorsement	
Community	
Local Government	
Traditional Owners	
RATIFIED DRAFT	
WAPC 26 October 2020	
Amendment Y endorsement	
WAPC	



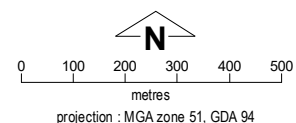
Lombadina Layout Plan 3 and Djarindjin Layout Plan 3 - Context

Draft Version 11



This Layout Plan does not constitute development approval. It is the responsibility of the developer to ensure that all relevant consents, approvals, licences and clearances are in place prior to commencing physical works on the site. Organisations responsible for such matters may include land owner, local government, incorporated community council, native title representative body, native title prescribed body corporate, Aboriginal Cultural Materials Committee, Environmental Protection Authority, state and federal government departments, and other relevant regulatory authorities. Go to the [PlanWA interactive planning map](#) to view Layout Plans with other spatial layers.

Layout Plan X endorsement	
Community	-
Local	-
Traditional Owners	-
WAPC	-
Amendment Y endorsement	
WAPC	-



Base information and aerial imagery supplied by the Western Australian Land Information Authority SLIP 1096-2018-1. April 2019 aerial image. Extraction date of cadastre 11/11/2020. Construction and developer proponents to refer to the 'Coastal Vulnerability Assessments for Localities in the Shire of Broome - Bardi Jawi Final Report'. Drinking water source protection area derived from the Djarindjin Community Drinking Water Source Protection Plan October 2010 commissioned by the Department of Communities (Housing). Settlement layout lots are not derived from calculated dimensions. Positional accuracy of aerial imagery is +/- 2 metres. Map document : Lombadina - Djarindjin LP3 RatifiedDraft11 - Context E.mxd Produced by Land Use Planning, Department of Planning, Lands & Heritage, on behalf of the Western Australian Planning Commission. © Western Australian Planning Commission 2020

Land Use

road reserve	road, essential service distribution network
residential	house, residential quarters
visitor camping	camping ground, traditional law and culture
community	child care premises, civic use, corrective institution, educational establishment, health care centre, worship building
open space	agriculture - extensive, essential service distribution network, traditional law and culture
rural	rural pursuit, agriculture - extensive, animal husbandry - intensive, agriculture - intensive, essential service distribution network
recreation	recreation, essential service distribution network
pedestrian access way	essential service distribution network, pedestrian access way
drinking water source protection area	any use permitted under the Drinking Water Source Protection Plan
waterway	agriculture - extensive, agriculture - intensive, traditional law and culture
commercial	art centre, caravan park, motel, office, service station, shop, tourism accommodation
industrial	fuel depot, industry, motor vehicle repair, storage, vehicle wrecking
public utility	electricity supply, essential service distribution network, drinking water supply, wastewater disposal, telecommunications, rubbish disposal

Features

production bore
as-constructed miscellaneous feature
watercourse

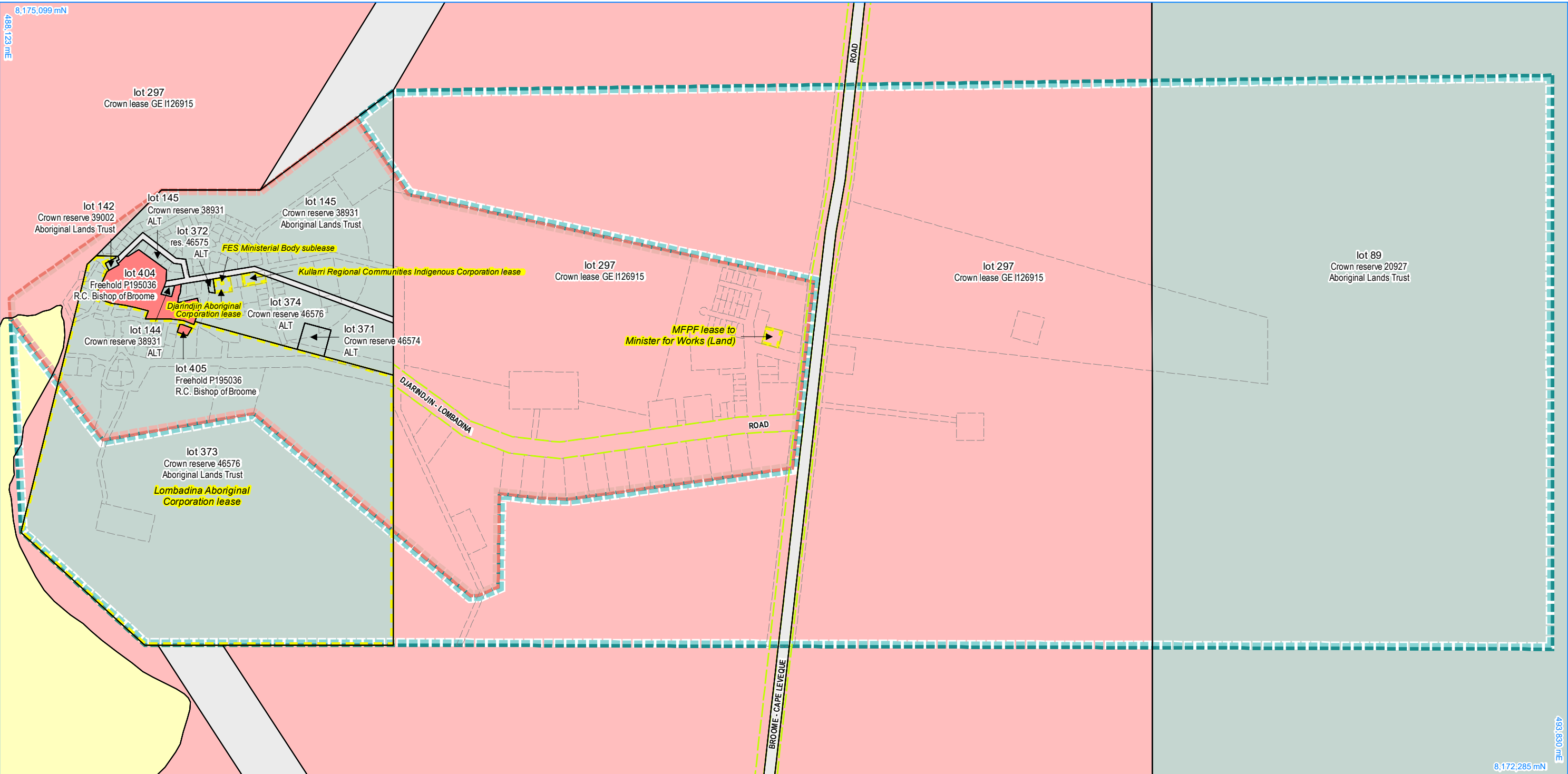
Land Administration

cadastre
lodged cadastre
private lease
recommended settlement zone
settlement zone
settlement layout (SL) lot & SL-lot number

Exclusion Boundary

drinking water source wellhead protection zone
no-go area
power station
utility
wastewater





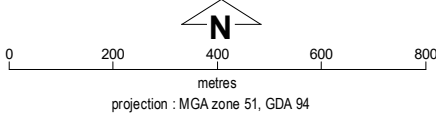
Lombadina Layout Plan 3 and Djarindjin Layout Plan 3 - Land Tenure

Draft Version 11



This Layout Plan does not constitute development approval. It is the responsibility of the developer to ensure that all relevant consents, approvals, licences and clearances are in place prior to commencing physical works on the site. Organisations responsible for such matters may include land owner, local government, incorporated community council, native title representative body, native title prescribed body corporate, Aboriginal Cultural Materials Committee, Environmental Protection Authority, state and federal government departments, and other relevant regulatory authorities. Go to the [PlanWA interactive planning map](#) to view Layout Plans with other spatial layers.

Layout Plan X endorsement	
Community	-
Local	-
Traditional Owners	-
WAPC	-
Amendment Y endorsement	
WAPC	-



Base information supplied by the Western Australian Land Information Authority
SLIP 1096-2018-1: Cadastre date 11/11/2020
Settlement layout lots are not derived from calculated dimensions.
Positional accuracy of aerial imagery is +/- 2 metres.
Map document : Lombadina - Djarindjin LP3 RatifiedDraft11 - Land Tenure E.mxd
Produced by Land Use Planning, Department of Planning, Lands & Heritage,
on behalf of the Western Australian Planning Commission.
© Western Australian Planning Commission 2020

Land Tenure	
crown reserve	
crown reserve - Aboriginal Lands Trust	
Department of Biodiversity, Conservation & Attractions managed	
freehold	
leasehold	
other	
pastoral lease	
pastoral lease - Aboriginal Lands Trust	
unallocated crown land	
water reserve	

Land Administration	
cadastre	
lodged cadastre	
private lease	
recommended settlement zone	
settlement zone	
settlement layout (SL) lot	

