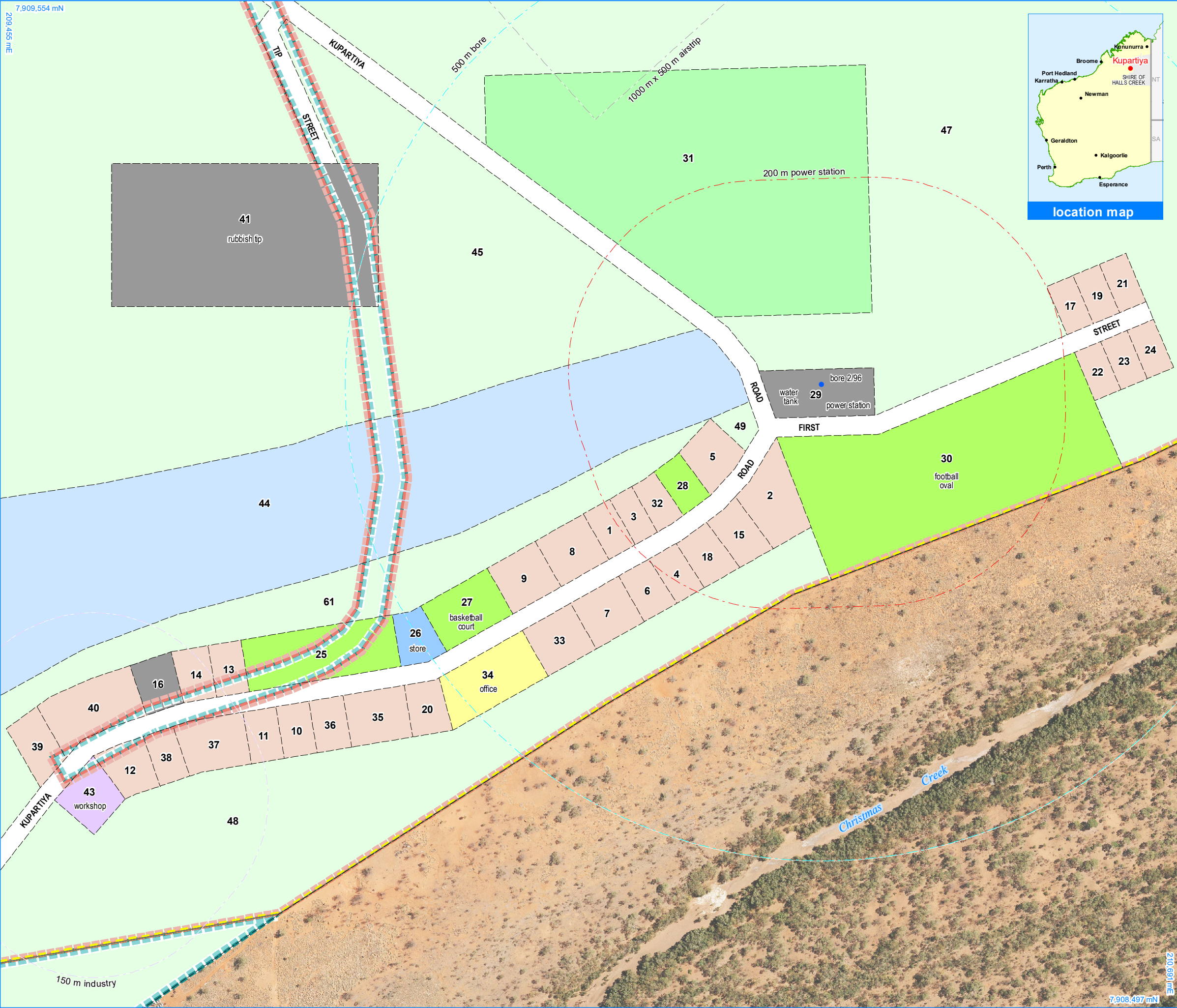


7,909,554 mN  
209,456 mE



# Kupartiya Layout Plan 1 - Living Area Amendment 2

**Features**

production bore

**Land Administration**

cadastre

lodged cadastre

private lease

recommended settlement zone

settlement zone

settlement layout (SL) lot & SL-lot number

63

**Exclusion Boundary** (see [Aboriginal Settlements Guideline 3](#))

drinking water source wellhead protection zone

industry

power station

utility

**Land Use** (see [Aboriginal Settlements Guideline 1](#))

road reserve

road, essential service distribution network

residential

house, residential quarters

visitor camping

camping ground, traditional law and culture

community

child care premises, civic use, corrective institution, educational establishment, health care centre, worship building

open space

agriculture - extensive, essential service distribution network, traditional law and culture

rural

rural pursuit, agriculture - extensive, animal husbandry - intensive, agriculture - intensive, essential service distribution network

recreation

recreation, essential service distribution network

pedestrian access way

essential service distribution network, pedestrian access way

drinking water source protection area

any use permitted under the Drinking Water Source Protection Plan

waterway

agriculture - extensive, agriculture - intensive, traditional law and culture

commercial

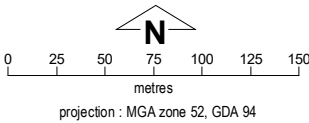
art centre, caravan park, motel, office, service station, shop, tourism accommodation

industrial

fuel depot, industry, motor vehicle repair, storage, vehicle wrecking

public utility

electricity supply, essential service distribution network, drinking water supply, wastewater disposal, telecommunications, rubbish disposal



This Layout Plan does not constitute development approval. It is the responsibility of the developer to ensure that all relevant consents, approvals, licences and clearances are in place prior to commencing physical works on the site. Organisations responsible for such matters may include land owner, local government, incorporated community council, native title representative body, native title prescribed body corporate, Aboriginal Cultural Materials Committee, Environmental Protection Authority, state and federal government departments, and other relevant regulatory authorities. Go to the [PlanWA interactive planning map](#) to view Layout Plans with other spatial layers.

Base information and aerial imagery supplied by the Western Australian Land Information Authority SLIP 1096-2018-1. Cadastre date 3/07/2020. October 2019 aerial image. Settlement layout lots are not derived from calculated dimensions.

Map document : Kupartiya LP1 Amd2 - Living Area E.mxd  
Produced by Land Use Planning, Department of Planning, Lands & Heritage on behalf of the Western Australian Planning Commission.  
© Western Australian Planning Commission 2020

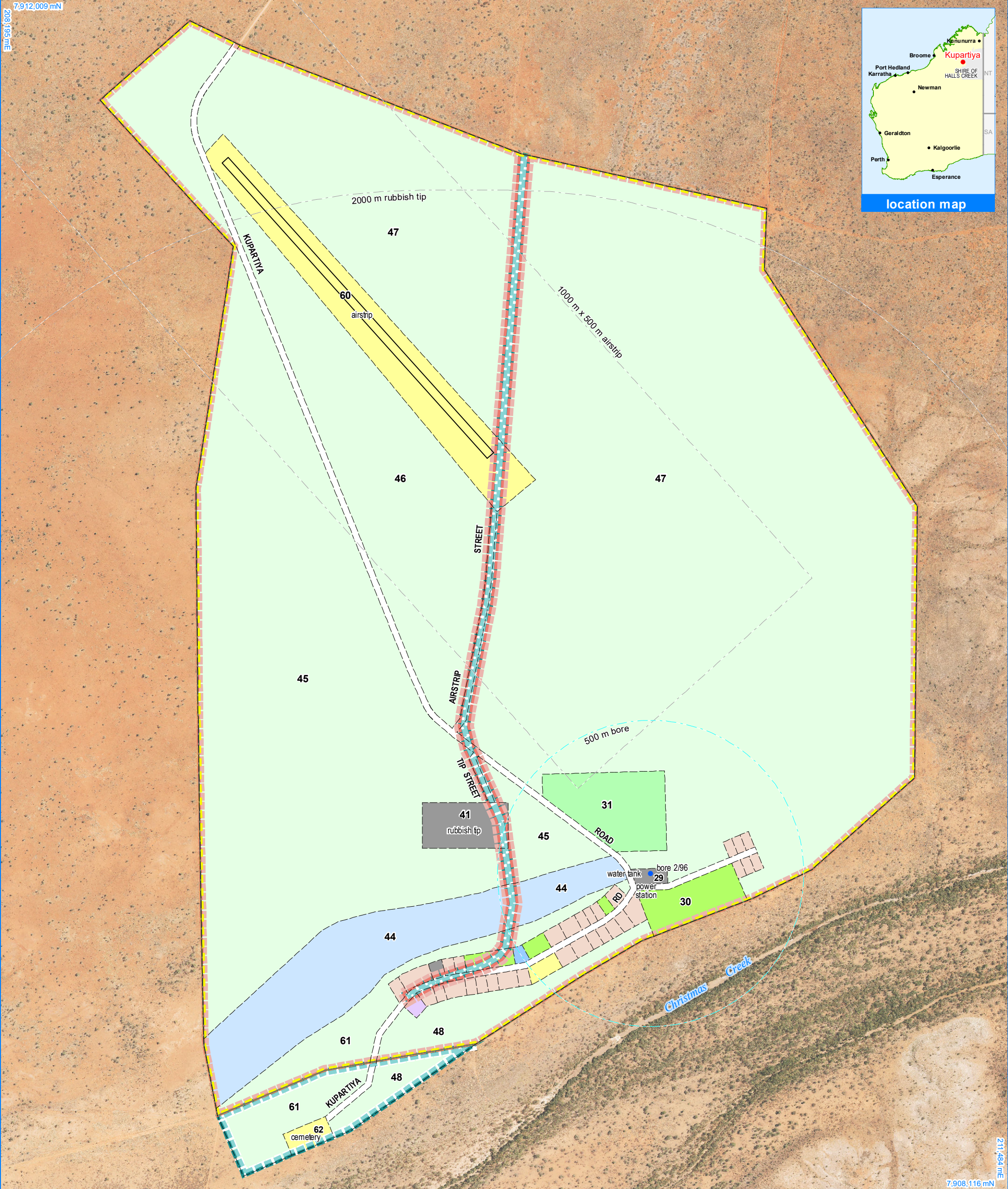


## Kupartiya Layout Plan 1 Background Report

Layout Plan 1 endorsement	
Community	18 March 2013
Local Government	-
Traditional Owners	5 September 2013
WAPC	22 October 2013
Amendment 2 endorsement	
WAPC	26 June 2020

210,691 mE  
7,908,497 mN





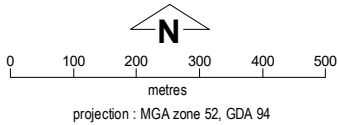
## Kupartiya Layout Plan 1 - Context

## Amendment 2



This Layout Plan does not constitute development approval. It is the responsibility of the developer to ensure that all relevant consents, approvals, licences and clearances are in place prior to commencing physical works on the site. Organisations responsible for such matters may include land owner, local government, incorporated community council, native title representative body, native title prescribed body corporate, Aboriginal Cultural Materials Committee, Environmental Protection Authority, state and federal government departments, and other relevant regulatory authorities. Go to the [PlanWA interactive planning map](#) to view Layout Plans with other spatial layers.

Layout Plan 1 endorsement	
Community	18 March 2013
Local Government	-
Traditional Owners	5 September 2013
WAPC	22 October 2013
Amendment 2 endorsement	
WAPC	26 June 2020



Base information and aerial imagery supplied by the Western Australian Land Information Authority SLIP 1096-2018-1. October 2019 aerial image. Extraction date of cadastre 3/07/2020.  
**Settlement layout lots are not derived from calculated dimensions.**  
Map document : Kupartiya LP1 Amd2 - Context E.mxd  
Produced by Land Use Planning, Department of Planning, Lands & Heritage, on behalf of the Western Australian Planning Commission.  
© Western Australian Planning Commission 2020

### Land Use

road reserve	road, essential service distribution network
residential	house, residential quarters
visitor camping	camping ground, traditional law and culture
community	child care premises, civic use, corrective institution, educational establishment, health care centre, worship building
open space	agriculture - extensive, essential service distribution network, traditional law and culture
rural	rural pursuit, agriculture - extensive, animal husbandry - intensive, agriculture - intensive, essential service distribution network
recreation	recreation, essential service distribution network
pedestrian access way	essential service distribution network, pedestrian access way
drinking water source protection area	any use permitted under the Drinking Water Source Protection Plan
waterway	agriculture - extensive, agriculture - intensive, traditional law and culture
commercial	art centre, caravan park, motel, office, service station, shop, tourism accommodation
industrial	fuel depot, industry, motor vehicle repair, storage, vehicle wrecking
public utility	electricity supply, essential service distribution network, drinking water supply, wastewater disposal, telecommunications, rubbish disposal

### Features

- production bore
- as-constructed miscellaneous feature

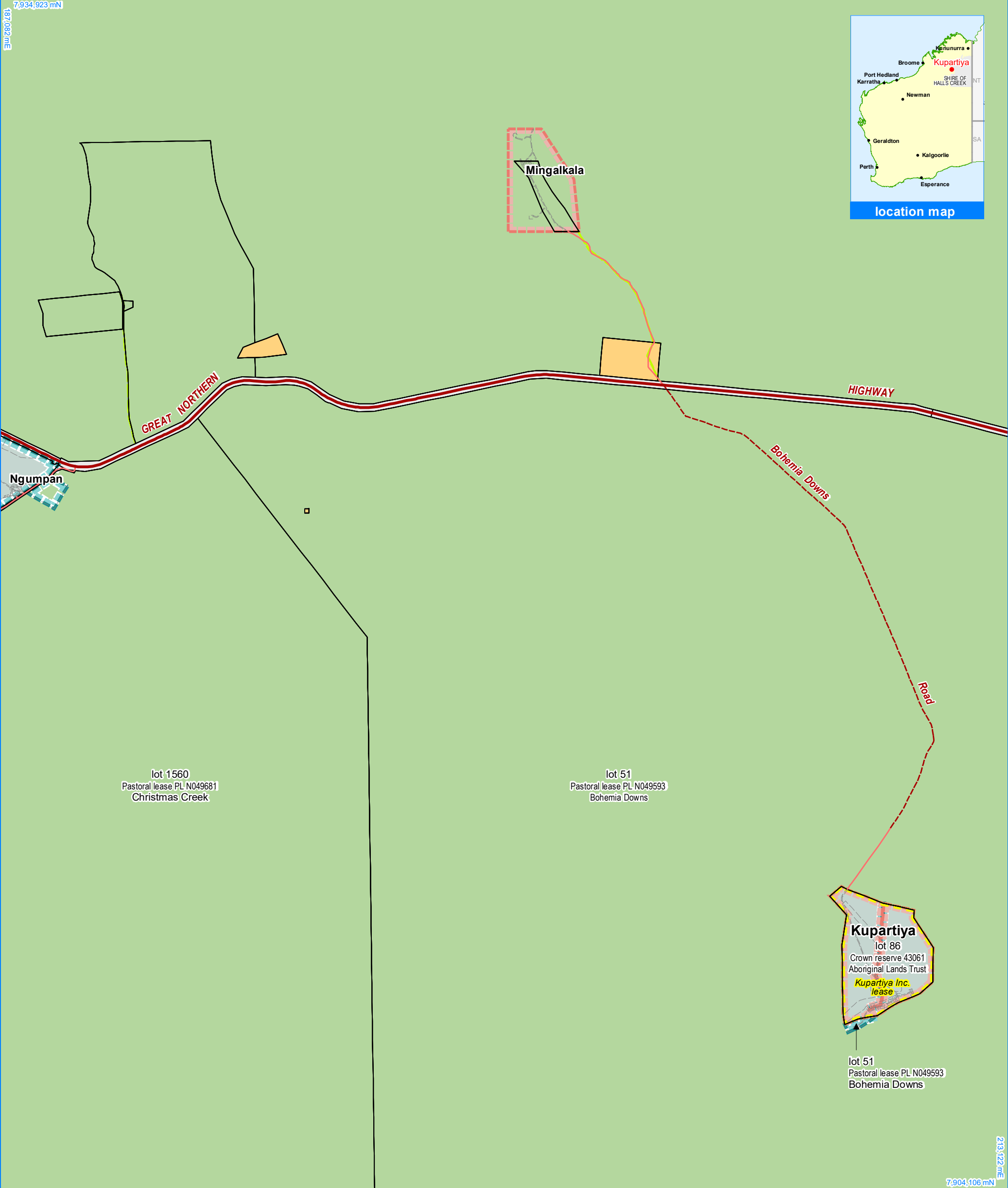
### Land Administration

- cadastre
- lodged cadastre
- private lease
- recommended settlement zone
- settlement zone
- settlement layout (SL) lot & SL-lot number

### Exclusion Boundary

- drinking water source wellhead protection zone
- utility





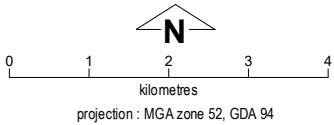
Kupartiya Layout Plan 1 - Land Tenure

Amendment 2



This Layout Plan does not constitute development approval. It is the responsibility of the developer to ensure that all relevant consents, approvals, licences and clearances are in place prior to commencing physical works on the site. Organisations responsible for such matters may include land owner, local government, incorporated community council, native title representative body, native title prescribed body corporate, Aboriginal Cultural Materials Committee, Environmental Protection Authority, state and federal government departments, and other relevant regulatory authorities. Go to the [PlanWA interactive planning map](#) to view Layout Plans with other spatial layers.

Layout Plan 1 endorsement	
Community	18 March 2013
Local Government	-
Traditional Owners	5 September 2013
WAPC	22 October 2013
Amendment 2 endorsement	
WAPC	26 June 2020



Base information supplied by the Western Australian Land Information Authority SLIP 1096-2018-1. Extraction date of cadastre 3/07/2020.  
**Settlement layout lots are not derived from calculated dimensions.**  
Map document : Kupartiya LP1 Amd7 - Land Tenure E.mxd  
Produced by Land Use Planning, Department of Planning, Lands & Heritage, on behalf of the Western Australian Planning Commission.  
© Western Australian Planning Commission 2020

Land Tenure	
crown reserve	
crown reserve	- Aboriginal Lands Trust
Department of Biodiversity, Conservation & Attractions managed	
freehold	
leasehold	
other	
pastoral lease	
pastoral lease	- Aboriginal Lands Trust
unallocated crown land	
water reserve	

Land Administration	
cadastre	
lodged cadastre	
private lease	
recommended settlement zone	
settlement zone	
settlement layout (SL) lot	
Roads	
national highway	
state highway	
major road	
minor road	
track	