



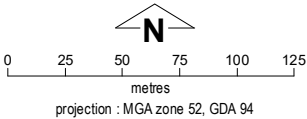
Kundat Djaru Layout Plan 1 - Living Area

Amendment 7



This Layout Plan does not constitute development approval. It is the responsibility of the developer to ensure that all relevant consents, approvals, licences and clearances are in place prior to commencing physical works on the site. Organisations responsible for such matters may include land owner, local government, incorporated community council, native title representative body, native title prescribed body corporate, Aboriginal Cultural Materials Committee, Environmental Protection Authority, state and federal government departments, and other relevant regulatory authorities. Go to the [PlanWA interactive planning map](#) to view Layout Plans with other spatial layers.

Layout Plan 1 endorsement	
Community	15 March 2002
Local Government	28 November 2002
Traditional Owners	-
WAPC	28 October 2003
Amendment 7 endorsement	
WAPC	20 May 2020

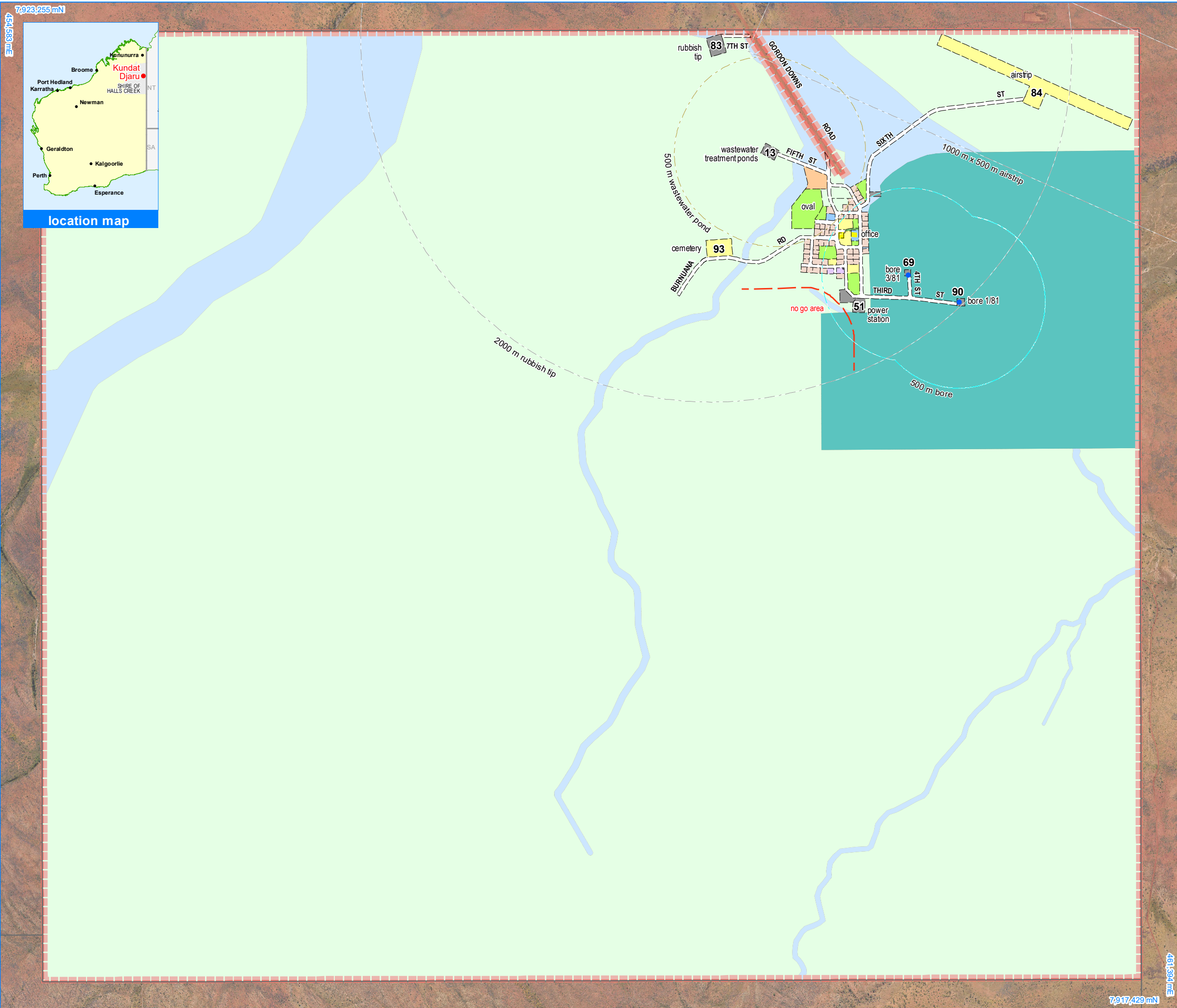


Kundat Djaru Layout Plan 1 Background Report

Base information and aerial imagery supplied by the Western Australian Land Information Authority SLIP 1096-2018-1. June 2020 aerial image. Extraction date of cadastre 28/08/2020. Drinking water source protection area derived from the Kundat Djaru Community Drinking Water Source Protection Plan June 2016 commissioned by the Department of Planning. Settlement layout lots are not derived from calculated dimensions. Positional accuracy of aerial imagery is +/- 2 metres. Map document : Kundat Djaru LP1 Amd7 - Living Area E.mxd Produced by Land Use Planning, Department of Planning, Lands & Heritage, on behalf of the Western Australian Planning Commission. © Western Australian Planning Commission 2020

Land Use (see SPP 3.2 Aboriginal Settlements Guideline)	
road reserve	road, essential service distribution network
residential	house, residential quarters
visitor camping	camping ground, traditional law and culture
community	child care premises, civic use, corrective institution, educational establishment, health care centre, worship building
open space	agriculture - extensive, essential service distribution network, traditional law and culture
rural	rural pursuit, agriculture - extensive, animal husbandry - intensive, agriculture - intensive, essential service distribution network
recreation	recreation, essential service distribution network
pedestrian access way	essential service distribution network, pedestrian access way
drinking water source protection area	any use permitted under the Drinking Water Source Protection Plan
waterway	agriculture - extensive, agriculture - intensive, traditional law and culture
commercial	art centre, caravan park, motel, office, service station, shop, tourism accommodation
industrial	fuel depot, industry, motor vehicle repair, storage, vehicle wrecking
public utility	electricity supply, essential service distribution network, drinking water supply, wastewater disposal, telecommunications, rubbish disposal

Features	
	production bore
Land Administration	
	cadastre
	lodged cadastre
	private lease
	recommended settlement zone
	settlement zone
	settlement layout (SL) lot & SL-lot number
Exclusion Boundary (see SPP 3.2 Aboriginal Settlements Guideline)	
	chlorine gas storage
	drinking water source wellhead protection zone
	industry
	no-go area
	power station
	wastewater



Kundat Djaru Layout Plan 1 - Context Amendment 7

Features

- production bore

Land Administration

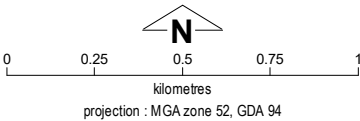
- cadastre
- lodged cadastre
- private lease
- recommended settlement zone
- settlement zone
- settlement layout (SL) lot & SL-lot number

Exclusion Boundary

- drinking water source wellhead protection zone
- no-go area
- utility
- wastewater

Land Use

road reserve	road, essential service distribution network
residential	house, residential quarters
visitor camping	camping ground, traditional law and culture
community	child care premises, civic use, corrective institution, educational establishment, health care centre, worship building
open space	agriculture - extensive, essential service distribution network, traditional law and culture
rural	rural pursuit, agriculture - extensive, animal husbandry - intensive, agriculture - intensive, essential service distribution network
recreation	recreation, essential service distribution network
pedestrian access way	essential service distribution network, pedestrian access way
drinking water source protection area	any use permitted under the Drinking Water Source Protection Plan
waterway	agriculture - extensive, agriculture - intensive, traditional law and culture
commercial	art centre, caravan park, motel, office, service station, shop, tourism accommodation
industrial	fuel depot, industry, motor vehicle repair, storage, vehicle wrecking
public utility	electricity supply, essential service distribution network, drinking water supply, wastewater disposal, telecommunications, rubbish disposal



This Layout Plan does not constitute development approval. It is the responsibility of the developer to ensure that all relevant consents, approvals, licences and clearances are in place prior to commencing physical works on the site. Organisations responsible for such matters may include land owner, local government, incorporated community council, native title representative body, native title prescribed body corporate, Aboriginal Cultural Materials Committee, Environmental Protection Authority, state and federal government departments, and other relevant regulatory authorities. Go to the [PlanWA interactive planning map](#) to view Layout Plans with other spatial layers.

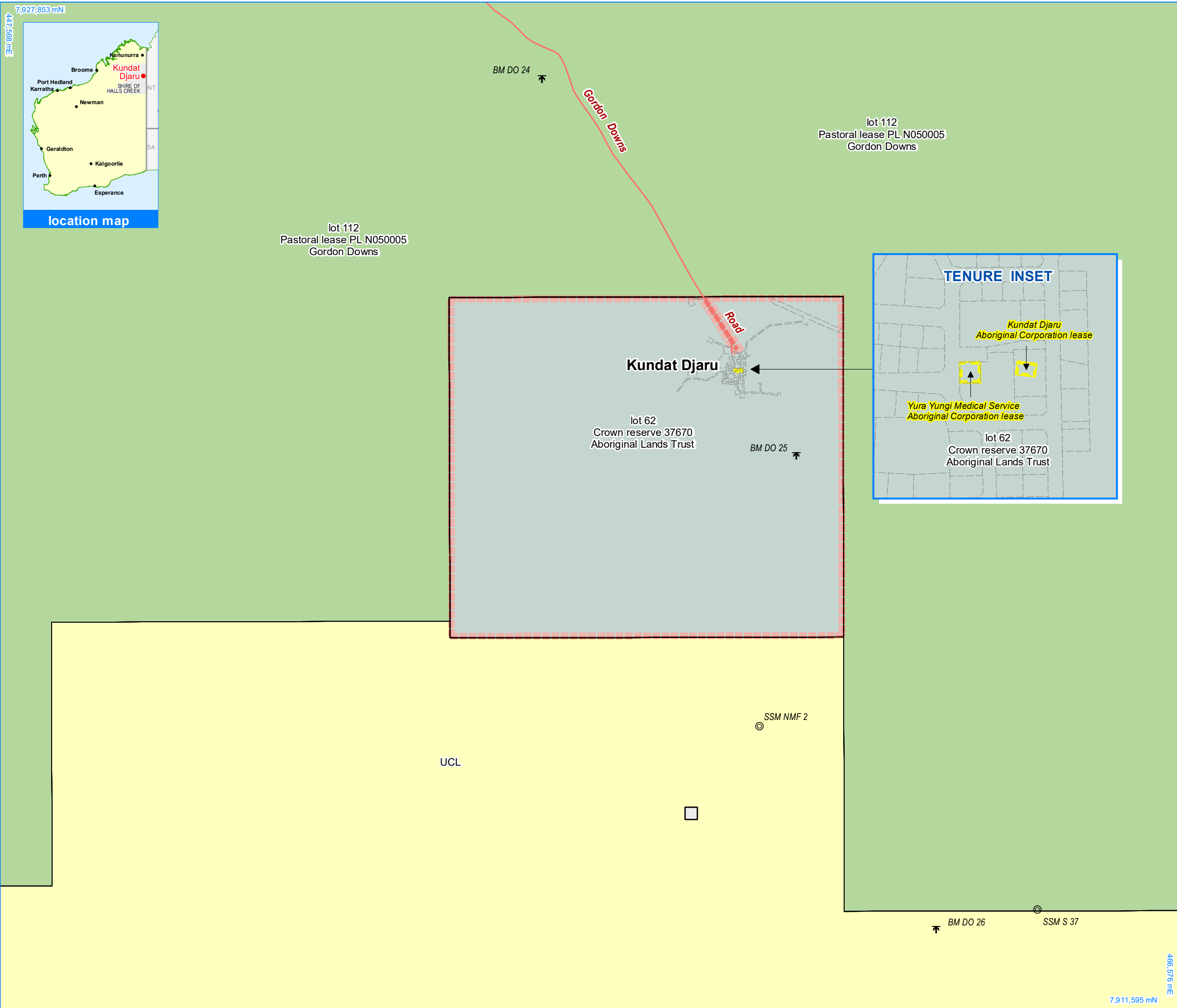
Base information and aerial imagery supplied by the Western Australian Land Information Authority SLIP 1096-2018-1. Cadastre date 28/08/2020. June 2020 aerial image. Drinking water source protection area derived from the Kundat Djaru Community Drinking Water Source Protection Plan June 2016, commissioned by the Department of Planning.

Settlement layout lots are not derived from calculated dimensions. Positional accuracy of aerial imagery is +/- 2 metres.

Map document : Kundat Djaru LP1 Amd7 - Context v2 E.mxd
Produced by Land Use Planning, Department of Planning, Lands & Heritage on behalf of the Western Australian Planning Commission.
© Western Australian Planning Commission 2020



Layout Plan 1 endorsement	
Community	15 March 2002
Local Government	28 November 2002
Traditional Owners	-
WAPC	28 October 2003
Amendment 7 endorsement	
WAPC	20 May 2020



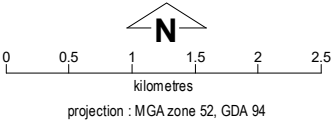
Kundat Djaru Layout Plan 1 - Land Tenure Amendment 7

Land Tenure	
crown reserve	
crown reserve	- Aboriginal Lands Trust
Department of Biodiversity, Conservation & Attractions managed	
freehold	
leasehold	
other	
pastoral lease	
pastoral lease	- Aboriginal Lands Trust
unallocated crown land	
water reserve	

Geodetic Survey Marks	
⚓	bench mark & name
⊙	standard survey mark & name

Land Administration	
	cadastre
	lodged cadastre
	private lease
	recommended settlement zone
	settlement zone
	settlement layout (SL) lot

Roads	
	national highway
	state highway
	major road
	minor road



This Layout Plan does not constitute development approval. It is the responsibility of the developer to ensure that all relevant consents, approvals, licences and clearances are in place prior to commencing physical works on the site. Organisations responsible for such matters may include land owner, local government, incorporated community council, native title representative body, native title prescribed body corporate, Aboriginal Cultural Materials Committee, Environmental Protection Authority, state and federal government departments, and other relevant regulatory authorities. Go to the [PlanWA interactive planning map](#) to view Layout Plans with other spatial layers.

Base information supplied by the Western Australian Land Information Authority SLIP 1096-2018-1. Cadastre date 28/08/2020.
Settlement layout lots are not derived from calculated dimensions.
Positional accuracy of aerial imagery is +/- 2 metres.
Map document : Kundat Djaru LP1 Amd7 - Land Tenure v2 E.mxd
Produced by Land Use Planning, Department of Planning, Lands & Heritage on behalf of the Western Australian Planning Commission.
© Western Australian Planning Commission 2020



Layout Plan 1 endorsement	
Community	15 March 2002
Local Government	28 November 2002
Traditional Owners	-
WAPC	28 October 2003
Amendment 7 endorsement	
WAPC	20 May 2020