

7,944,551 mN
684,965 mE

1
desalination unit
water tank
bore
telecommunication tower
3
4
5
6
60
desalination evaporation ponds



location map

14
power station
15
16
17
18
19
20
21
22
23
24
25
rubbish tip
26
27
28
29
30
aged care
31
clinic
32
childcare
33
women's centre
34
store/office
35
arts/training
36
recreation centre
37
38
39
40
Ngalapita Remote Community School
41
42
43
44
45
46
47
48
49
50
51
52
53
54
55
56
57
58
59
61
oval
62
cemetery
63
settlement layout (SL) lot & SL-lot number

200 m power station
150 m industry

1000 m x 500 m airstrip

to airstrip
7,943,670 mN
685,995 mE

Koorabye Layout Plan 2 - Living Area Amendment 1

Features

bore

Land Administration

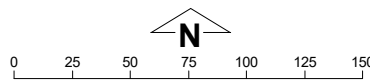
- cadastre
- lodged cadastre
- private lease
- recommended settlement zone
- settlement zone
- settlement layout (SL) lot & SL-lot number

Exclusion Boundary (see [SPP 3.2 Aboriginal Settlements Guideline](#))

- industry
- power station
- utility

Land Use (see [SPP 3.2 Aboriginal Settlements Guideline](#))

| | |
|---------------------------------------|--|
| road reserve | road, essential service distribution network |
| residential | house, residential quarters |
| visitor camping | camping ground, traditional law and culture |
| community | child care premises, civic use, corrective institution, educational establishment, health care centre, worship building |
| open space | agriculture - extensive, essential service distribution network, traditional law and culture |
| rural | rural pursuit, agriculture - extensive, animal husbandry - intensive, agriculture - intensive, essential service distribution network |
| recreation | recreation, essential service distribution network |
| pedestrian access way | essential service distribution network, pedestrian access way |
| drinking water source protection area | any use permitted under the Drinking Water Source Protection Plan |
| waterway | agriculture - extensive, agriculture - intensive, traditional law and culture |
| commercial | art centre, caravan park, motel, office, service station, shop, tourism accommodation |
| industrial | fuel depot, industry, motor vehicle repair, storage, vehicle wrecking |
| public utility | electricity supply, essential service distribution network, drinking water supply, wastewater disposal, telecommunications, rubbish disposal |



projection : MGA zone 51, GDA 94

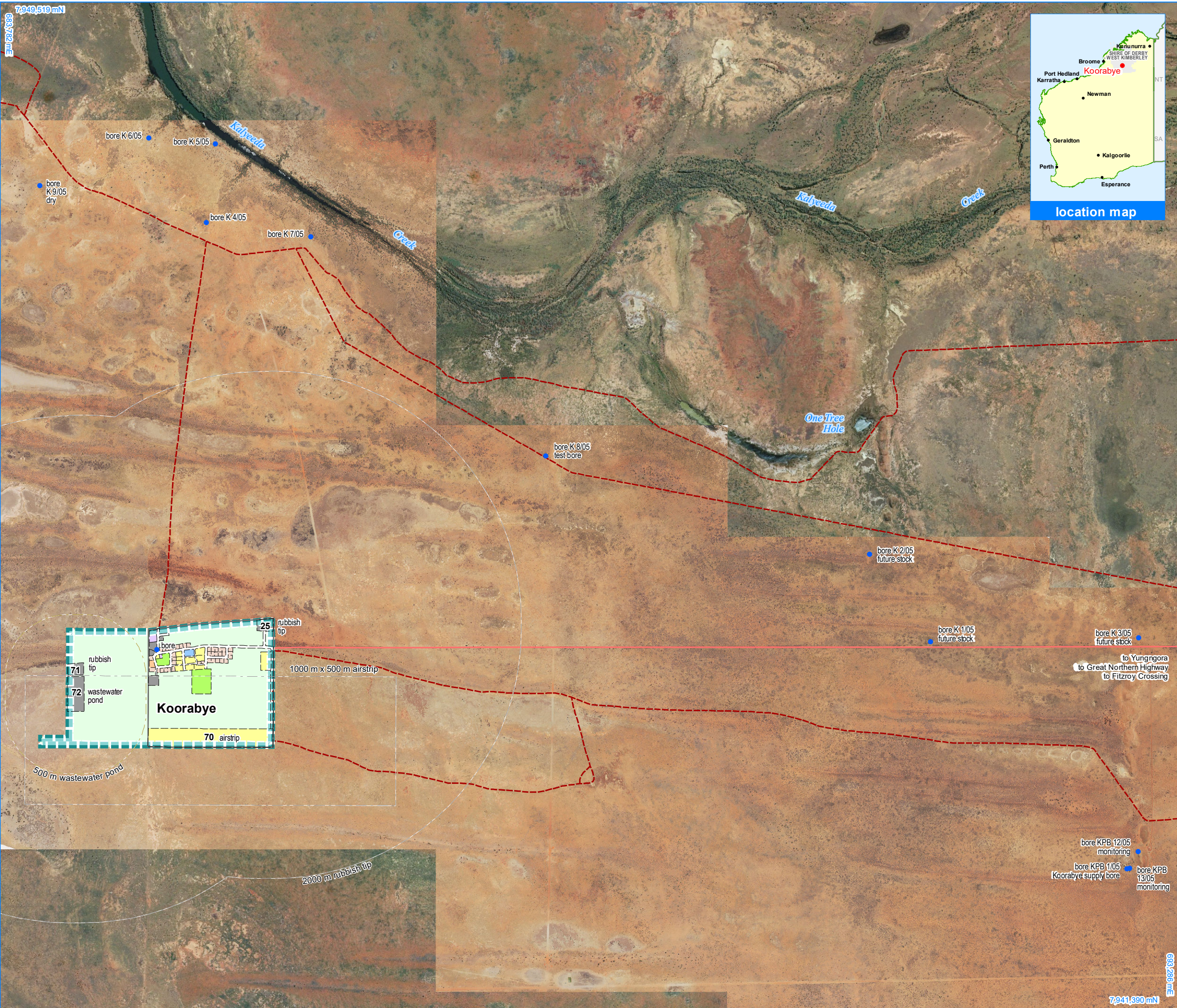
This Layout Plan does not constitute development approval. It is the responsibility of the developer to ensure that all relevant consents, approvals, licences and clearances are in place prior to commencing physical works on the site. Organisations responsible for such matters may include land owner, local government, incorporated community council, native title representative body, native title prescribed body corporate, Aboriginal Cultural Materials Committee, Environmental Protection Authority, state and federal government departments, and other relevant regulatory authorities. Go to the [PlanWA interactive planning map](#) to view Layout Plans with other spatial layers.

Base information and aerial imagery supplied by the Western Australian Land Information Authority SLIP 1180-2020-1. Cadastre date 9/12/2020. October 2019 aerial image. Settlement layout lots are not derived from calculated dimensions. Positional accuracy of aerial imagery is +/- 2 metres. Map document : Koorabye LP2 Amd1 - Living Area v3 E.mxd Produced by Land Use Planning, Department of Planning, Lands & Heritage on behalf of the Western Australian Planning Commission. © Western Australian Planning Commission 2020



Koorabye Layout Plan 2 Background Report

| Layout Plan 2 endorsement | |
|---------------------------|------------------|
| Community | 1 May 2007 |
| Local Government | 28 June 2007 |
| Traditional Owners | - |
| WAPC | 21 August 2007 |
| Amendment 1 endorsement | |
| WAPC | 13 November 2012 |



Koorabye Layout Plan 2 - Context Amendment 1

Features

bore

Roads

minor road

track

Land Administration

cadastre

lodged cadastre

private lease

recommended settlement zone

settlement zone

settlement layout (SL) lot & SL-lot number

63

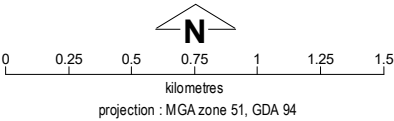
Exclusion Boundary

utility

wastewater

Land Use

| | |
|---------------------------------------|--|
| road reserve | road, essential service distribution network |
| residential | house, residential quarters |
| visitor camping | camping ground, traditional law and culture |
| community | child care premises, civic use, corrective institution, educational establishment, health care centre, worship building |
| open space | agriculture - extensive, essential service distribution network, traditional law and culture |
| rural | rural pursuit, agriculture - extensive, animal husbandry - intensive, agriculture - intensive, essential service distribution network |
| recreation | recreation, essential service distribution network |
| pedestrian access way | essential service distribution network, pedestrian access way |
| drinking water source protection area | any use permitted under the Drinking Water Source Protection Plan |
| waterway | agriculture - extensive, agriculture - intensive, traditional law and culture |
| commercial | art centre, caravan park, motel, office, service station, shop, tourism accommodation |
| industrial | fuel depot, industry, motor vehicle repair, storage, vehicle wrecking |
| public utility | electricity supply, essential service distribution network, drinking water supply, wastewater disposal, telecommunications, rubbish disposal |

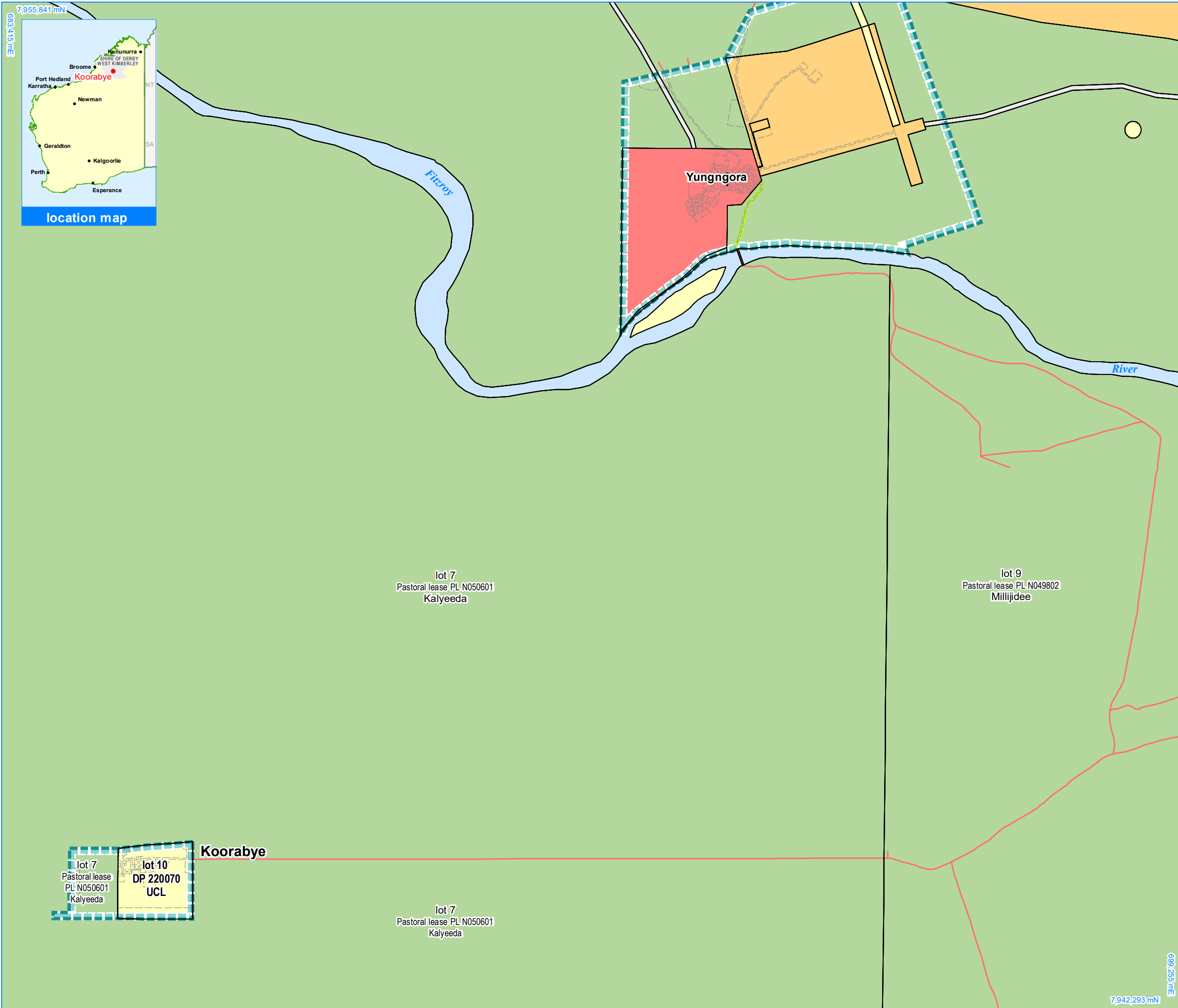


This Layout Plan does not constitute development approval. It is the responsibility of the developer to ensure that all relevant consents, approvals, licences and clearances are in place prior to commencing physical works on the site. Organisations responsible for such matters may include land owner, local government, incorporated community council, native title representative body, native title prescribed body corporate, Aboriginal Cultural Materials Committee, Environmental Protection Authority, state and federal government departments, and other relevant regulatory authorities. Go to the [PlanWA interactive planning map](#) to view Layout Plans with other spatial layers.

Base information and aerial imagery supplied by the Western Australian Land Information Authority SLIP 1180-2020-1. Cadastre date 9/12/2020. November 2007 & October 2019 aerial images. Settlement layout lots are not derived from calculated dimensions. Positional accuracy of aerial imagery is +/- 2 metres. Map document : Koorabye LP2 Amd1 - Context v3 E.mxd Produced by Land Use Planning, Department of Planning, Lands & Heritage on behalf of the Western Australian Planning Commission. © Western Australian Planning Commission 2020



| Layout Plan 2 endorsement | |
|---------------------------|------------------|
| Community | 1 May 2007 |
| Local Government | 28 June 2007 |
| Traditional Owners | - |
| WAPC | 21 August 2007 |
| Amendment 1 endorsement | |
| WAPC | 13 November 2012 |



Koorabye Layout Plan 2 - Land Tenure Amendment 1

Land Tenure

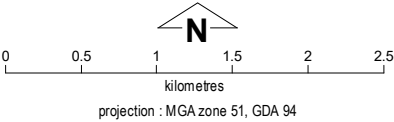
| | |
|--|--------------------------|
| crown reserve | |
| crown reserve | - Aboriginal Lands Trust |
| Department of Biodiversity, Conservation & Attractions managed | |
| freehold | |
| leasehold | |
| other | |
| pastoral lease | |
| pastoral lease | - Aboriginal Lands Trust |
| unallocated crown land | |
| water reserve | |

Land Administration

| | |
|--|-----------------------------|
| | cadastre |
| | lodged cadastre |
| | private lease |
| | recommended settlement zone |
| | settlement zone |
| | settlement layout (SL) lot |

Roads

| | |
|--|------------------|
| | national highway |
| | state highway |
| | major road |
| | minor road |



This Layout Plan does not constitute development approval. It is the responsibility of the developer to ensure that all relevant consents, approvals, licences and clearances are in place prior to commencing physical works on the site. Organisations responsible for such matters may include land owner, local government, incorporated community council, native title representative body, native title prescribed body corporate, Aboriginal Cultural Materials Committee, Environmental Protection Authority, state and federal government departments, and other relevant regulatory authorities. Go to the [PlanWA interactive planning map](#) to view Layout Plans with other spatial layers.

Base information supplied by the Western Australian Land Information Authority SLIP 1180-2020-1. Cadastre date 9/12/2020. Settlement layout lots are not derived from calculated dimensions. Positional accuracy of aerial imagery is +/- 2 metres. Map document : Koorabye LP2 Amd1 - Land Tenure v3 E.mxd Produced by Land Use Planning, Department of Planning, Lands & Heritage on behalf of the Western Australian Planning Commission. © Western Australian Planning Commission 2020



| Layout Plan 2 endorsement | |
|---------------------------|------------------|
| Community | 1 May 2007 |
| Local Government | 28 June 2007 |
| Traditional Owners | - |
| WAPC | 21 August 2007 |
| Amendment 1 endorsement | |
| WAPC | 13 November 2012 |