

Koongie Park Layout Plan 2 - Living Area Amendment 7

Features

production bore

watercourse

Land Administration

cadastre

lodged cadastre

private lease

recommended settlement zone

settlement zone

settlement layout (SL) lot & SL-lot number

63

Exclusion Boundary (see [SPP 3.2 Aboriginal Settlements Guideline](#))

chlorine gas storage

drinking water source wellhead protection zone

fuel storage

industry

wastewater

Land Use (see [SPP 3.2 Aboriginal Settlements Guideline](#))

road reserve

road, essential service distribution network

residential

house, residential quarters

visitor camping

camping ground, traditional law and culture

community

child care premises, civic use, corrective institution, educational establishment, health care centre, worship building

open space

agriculture - extensive, essential service distribution network, traditional law and culture

rural

rural pursuit, agriculture - extensive, animal husbandry - intensive, agriculture - intensive, essential service distribution network

recreation

recreation, essential service distribution network

pedestrian access way

essential service distribution network, pedestrian access way

drinking water source protection area

any use permitted under the Drinking Water Source Protection Plan

waterway

agriculture - extensive, agriculture - intensive, traditional law and culture

commercial

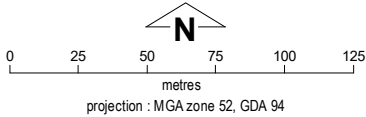
art centre, caravan park, motel, office, service station, shop, tourism accommodation

industrial

fuel depot, industry, motor vehicle repair, storage, vehicle wrecking

public utility

electricity supply, essential service distribution network, drinking water supply, wastewater disposal, telecommunications, rubbish disposal



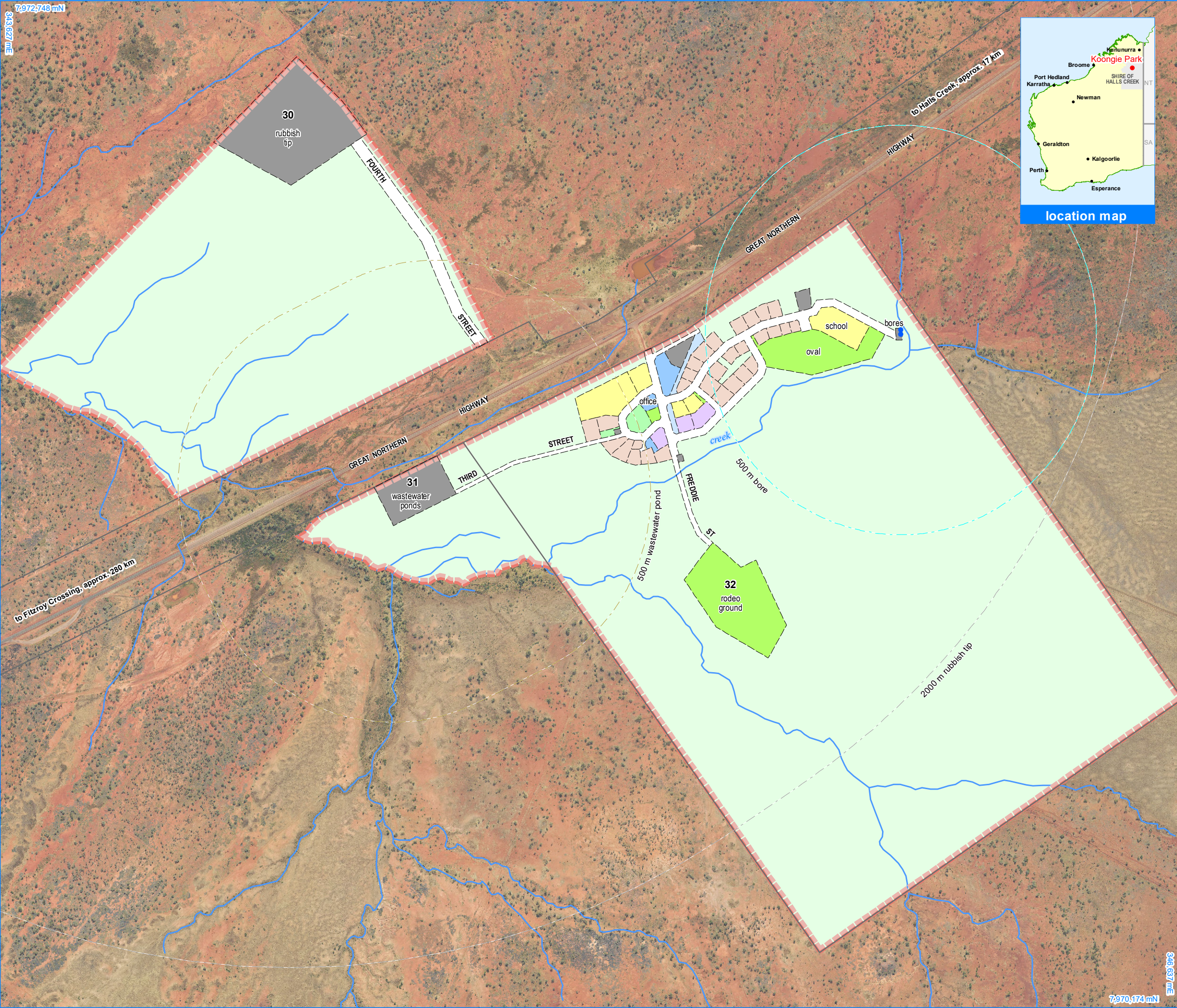
This Layout Plan does not constitute development approval. It is the responsibility of the developer to ensure that all relevant consents, approvals, licences and clearances are in place prior to commencing physical works on the site. Organisations responsible for such matters may include land owner, local government, incorporated community council, native title representative body, native title prescribed body corporate, Aboriginal Cultural Materials Committee, Environmental Protection Authority, state and federal government departments, and other relevant regulatory authorities. Go to the [PlanWA Interactive planning map](#) to view Layout Plans with other spatial layers.

Base information and aerial imagery supplied by the Western Australian Land Information Authority SLIP 1096-2018-1. Cadastre date 16/11/2020. June 2020 aerial image. Settlement layout lots are not derived from calculated dimensions. Positional accuracy of aerial imagery is +/- 2 metres. Map document : Koongie Park LP2 Amd7 - Living Area v2 E.mxd Produced by Land Use Planning, Department of Planning, Lands & Heritage on behalf of the Western Australian Planning Commission. © Western Australian Planning Commission 2020



Koongie Park Layout Plan 2 Background Report

Layout Plan 2 endorsement	
Community	1 November 2010
Local Government	-
Traditional Owners	-
WAPC	29 September 2011
Amendment 7 endorsement	
WAPC	20 May 2020



Koongie Park Layout Plan 2 - Context Amendment 7

Features

production bore

watercourse

Land Administration

cadastre

lodged cadastre

private lease

recommended settlement zone

settlement zone

63

settlement layout (SL) lot & SL-lot number

Exclusion Boundary

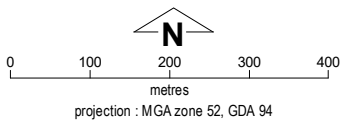
drinking water source wellhead protection zone

utility

wastewater

Land Use

road reserve	road, essential service distribution network
residential	house, residential quarters
visitor camping	camping ground, traditional law and culture
community	child care premises, civic use, corrective institution, educational establishment, health care centre, worship building
open space	agriculture - extensive, essential service distribution network, traditional law and culture
rural	rural pursuit, agriculture - extensive, animal husbandry - intensive, agriculture - intensive, essential service distribution network
recreation	recreation, essential service distribution network
pedestrian access way	essential service distribution network, pedestrian access way
drinking water source protection area	any use permitted under the Drinking Water Source Protection Plan
waterway	agriculture – extensive, agriculture – intensive, traditional law and culture
commercial	art centre, caravan park, motel, office, service station, shop, tourism accommodation
industrial	fuel depot, industry, motor vehicle repair, storage, vehicle wrecking
public utility	electricity supply, essential service distribution network, drinking water supply, wastewater disposal, telecommunications, rubbish disposal



This Layout Plan does not constitute development approval. It is the responsibility of the developer to ensure that all relevant consents, approvals, licences and clearances are in place prior to commencing physical works on the site. Organisations responsible for such matters may include land owner, local government, incorporated community council, native title representative body, native title prescribed body corporate, Aboriginal Cultural Materials Committee, Environmental Protection Authority, state and federal government departments, and other relevant regulatory authorities. Go to the [PlanWA interactive planning map](#) to view Layout Plans with other spatial layers.

Base information and aerial imagery supplied by the Western Australian Land Information Authority SLIP 1096-2018-1. Cadastre date 16/11/2020. June 2020 aerial image. Settlement layout lots are not derived from calculated dimensions. Positional accuracy of aerial imagery is +/- 2 metres. Map document : Koongie Park LP2 And7 - Context v2 E.mxd Produced by Land Use Planning, Department of Planning, Lands & Heritage on behalf of the Western Australian Planning Commission. © Western Australian Planning Commission 2020



Layout Plan 2 endorsement	
Community	1 November 2010
Local Government	-
Traditional Owners	-
WAPC	29 September 2011
Amendment 7 endorsement	
WAPC	20 May 2020



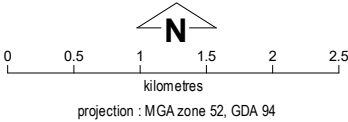
Koongie Park Layout Plan 2 - Land Tenure Amendment 7

Land Tenure	
crown reserve	
crown reserve	- Aboriginal Lands Trust
Department of Biodiversity, Conservation & Attractions managed	
freehold	
leasehold	
other	
pastoral lease	
pastoral lease	- Aboriginal Lands Trust
unallocated crown land	
water reserve	

Geodetic Survey Marks	
	bench mark & name
	standard survey mark & name

Land Administration	
	cadastre
	lodged cadastral
	private lease
	recommended settlement zone
	settlement zone
	settlement layout (SL) lot

Roads	
	national highway
	state highway
	major road
	minor road



This Layout Plan does not constitute development approval. It is the responsibility of the developer to ensure that all relevant consents, approvals, licences and clearances are in place prior to commencing physical works on the site. Organisations responsible for such matters may include land owner, local government, incorporated community council, native title representative body, native title prescribed body corporate, Aboriginal Cultural Materials Committee, Environmental Protection Authority, state and federal government departments, and other relevant regulatory authorities. Go to the [PlanWA interactive planning map](#) to view Layout Plans with other spatial layers.

Base information supplied by the Western Australian Land Information Authority SLIP 1096-2018-1. Cadastre date 16/11/2020.
Settlement layout lots are not derived from calculated dimensions.
Positional accuracy of aerial imagery is +/- 2 metres.
Map document : Koongie Park LP2 Amd7 - Land Tenure v2 E.mxd
Produced by Land Use Planning, Department of Planning, Lands & Heritage on behalf of the Western Australian Planning Commission.
© Western Australian Planning Commission 2020



Layout Plan 2 endorsement	
Community	1 November 2010
Local Government	-
Traditional Owners	-
WAPC	29 September 2011
Amendment 7 endorsement	
WAPC	20 May 2020

