

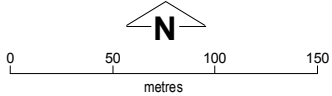
Kandival Layout Plan 1 - Living Area

Amendment 3



This Layout Plan does not constitute development approval. It is the responsibility of the developer to ensure that all relevant consents, approvals, licences and clearances are in place prior to commencing physical works on the site. Organisations responsible for such matters may include land owner, local government, incorporated community council, native title representative body, native title prescribed body corporate, Aboriginal Cultural Materials Committee, Environmental Protection Authority, state and federal government departments, and other relevant regulatory authorities. Go to the [PlanWA interactive planning map](#) to view Layout Plans with other spatial layers.

Layout Plan 1 endorsement	
Community	28 April 2010
Local Government	18 May 2010
Traditional Owners	-
WAPC	8 June 2010
Amendment 3 endorsement	
WAPC	17 January 2020



Kandival Layout Plan 1 Background Report

Base information and aerial imagery supplied by the Western Australian Land Information Authority SLIP 1096-2018-1. March 2019 aerial image. Extraction date of cadastre 29/01/2020.
Settlement layout lots are not derived from calculated dimensions.
Map document : Kandival LP1 Amd3 - Living Area.mxd
Produced by Land Use Planning, Department of Planning, Lands & Heritage, on behalf of the Western Australian Planning Commission.
© Western Australian Planning Commission 2020

Land Use (see Aboriginal Settlements Guideline 1)	
road reserve	road, essential service distribution network
residential	house, residential quarters
visitor camping	camping ground, traditional law and culture
community	child care premises, civic use, corrective institution, educational establishment, health care centre, worship building
open space	agriculture - extensive, essential service distribution network, traditional law and culture
rural	rural pursuit, agriculture - extensive, animal husbandry - intensive, agriculture - intensive, essential service distribution network
recreation	recreation, essential service distribution network
pedestrian access way	essential service distribution network, pedestrian access way
drinking water source protection area	any use permitted under the Drinking Water Source Protection Plan
waterway	agriculture - extensive, agriculture - intensive, traditional law and culture
commercial	art centre, caravan park, motel, office, service station, shop, tourism accommodation
industrial	fuel depot, industry, motor vehicle repair, storage, vehicle wrecking
public utility	electricity supply, essential service distribution network, drinking water supply, wastewater disposal, telecommunications, rubbish disposal

Features

bore

Land Administration

cadastre

lodged cadastre

private lease

recommended settlement zone

settlement zone

settlement layout (SL) lot & SL-lot number

63

Exclusion Boundary (see [Aboriginal Settlements Guideline 3](#))

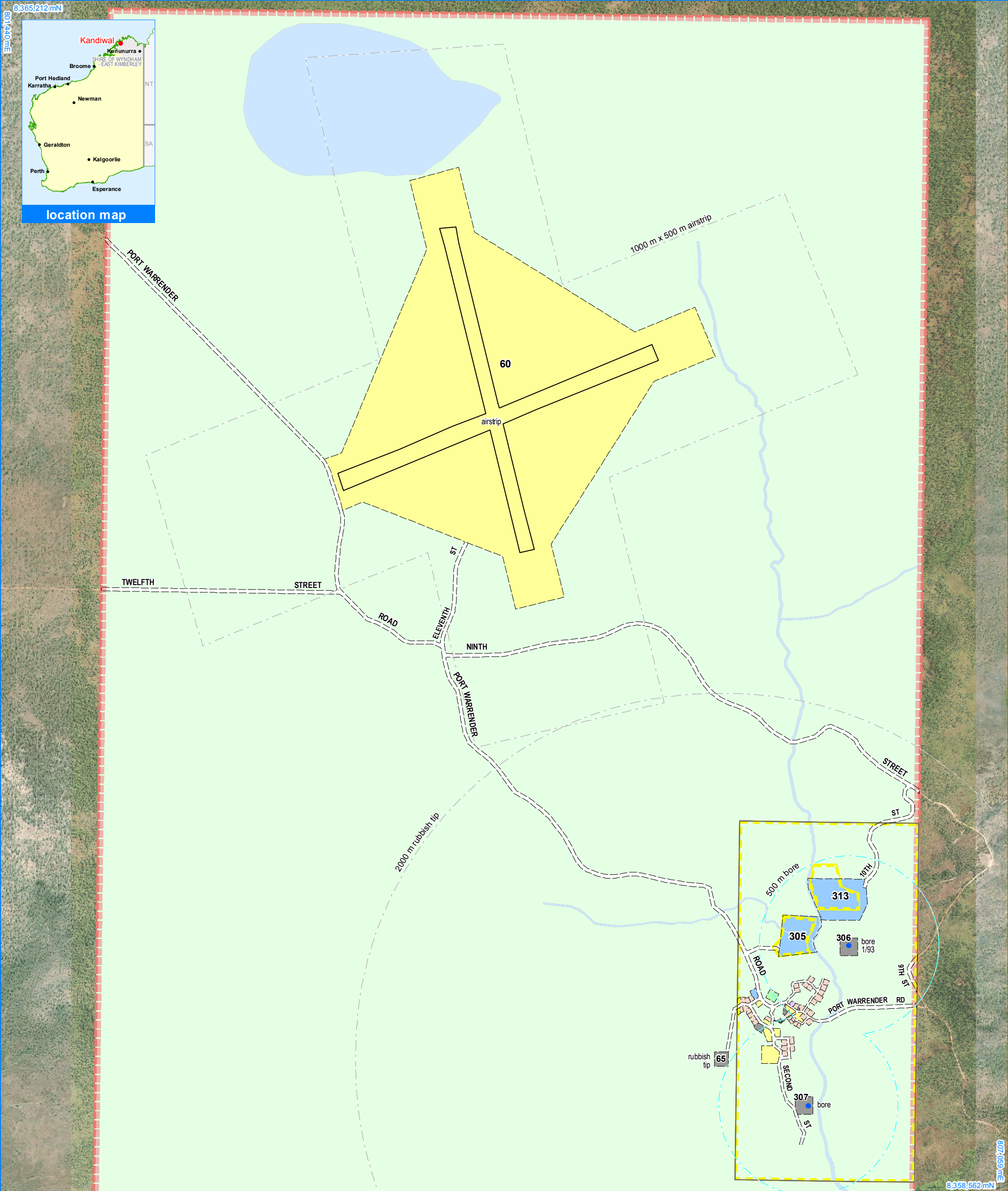
drinking water source wellhead protection zone

industry

power station

8,359,004 mN

806,318 mE



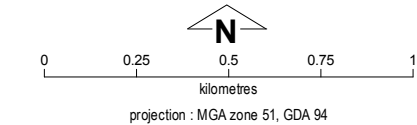
Kandimal Layout Plan 1 - Context

Amendment 3



This Layout Plan does not constitute development approval. It is the responsibility of the developer to ensure that all relevant consents, approvals, licences and clearances are in place prior to commencing physical works on the site. Organisations responsible for such matters may include land owner, local government, incorporated community council, native title representative body, native title prescribed body corporate, Aboriginal Cultural Materials Committee, Environmental Protection Authority, state and federal government departments, and other relevant regulatory authorities. Go to the [PlanWA interactive planning map](#) to view Layout Plans with other spatial layers.

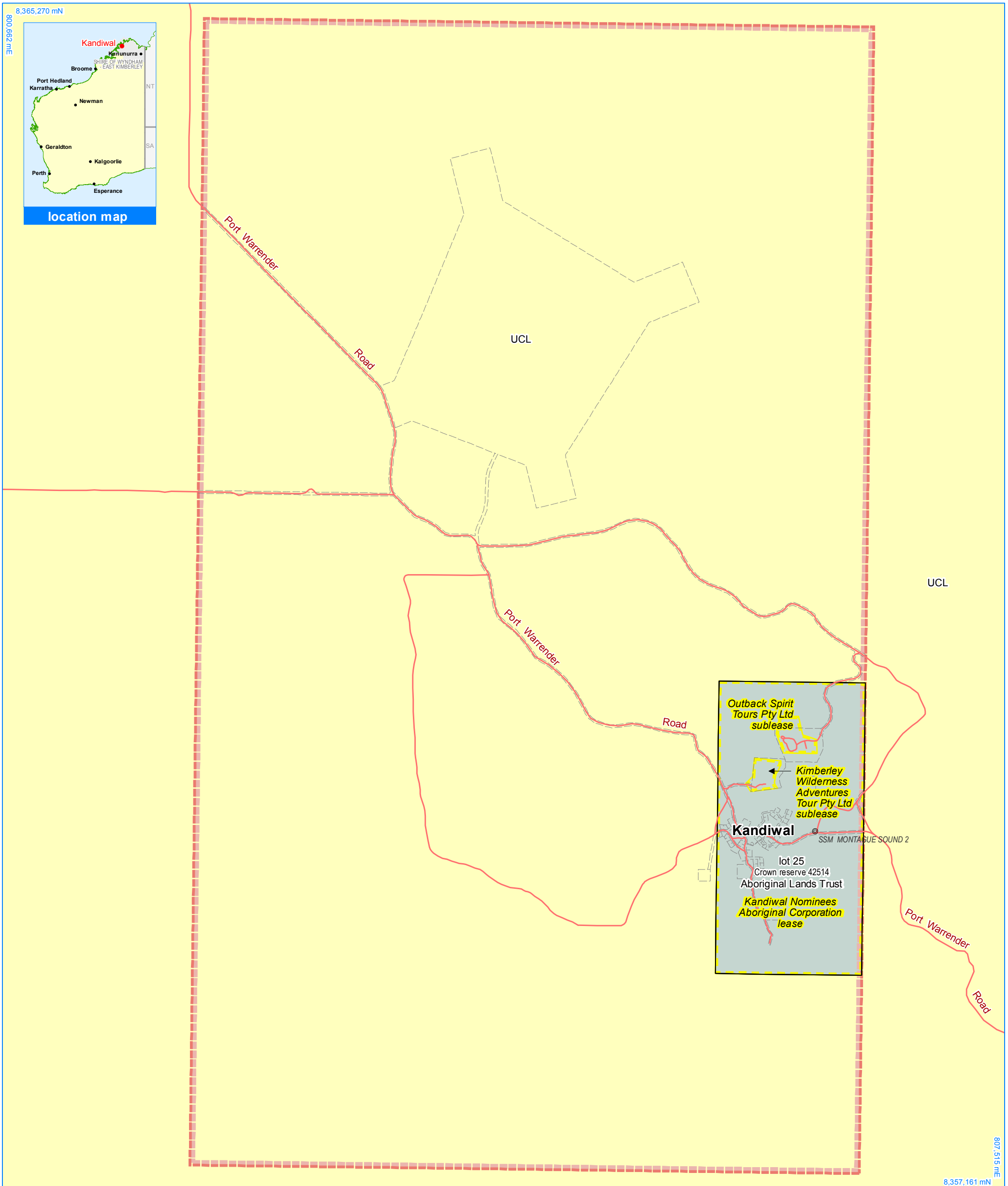
Layout Plan 1 endorsement	
Community	28 April 2010
Local Government	18 May 2010
Traditional Owners	-
WAPC	8 June 2010
Amendment 3 endorsement	
WAPC	17 January 2020



Base information and aerial imagery supplied by the Western Australian Land Information Authority SLIP 1096-2018-1. July 2007 and March 2019 aerial images. Extraction date of cadastre 29/01/2020.
Settlement layout lots are not derived from calculated dimensions.
Map document : Kandimal LP1 Amd3 - Context.mxd
Produced by Land Use Planning, Department of Planning, Lands & Heritage, on behalf of the Western Australian Planning Commission.
© Western Australian Planning Commission 2020

Land Use	
road reserve	road, essential service distribution network
residential	house, residential quarters
visitor camping	camping ground, traditional law and culture
community	child care premises, civic use, corrective institution, educational establishment, health care centre, worship building
open space	agriculture - extensive, essential service distribution network, traditional law and culture
rural	rural pursuit, agriculture - extensive, animal husbandry - intensive, agriculture - intensive, essential service distribution network
recreation	recreation, essential service distribution network
pedestrian access way	essential service distribution network, pedestrian access way
drinking water source protection area	any use permitted under the Drinking Water Source Protection Plan
waterway	agriculture - extensive, agriculture - intensive, traditional law and culture
commercial	art centre, caravan park, motel, office, service station, shop, tourism accommodation
industrial	fuel depot, industry, motor vehicle repair, storage, vehicle wrecking
public utility	electricity supply, essential service distribution network, drinking water supply, wastewater disposal, telecommunications, rubbish disposal

Features	
	production bore
	as-constructed miscellaneous feature
Land Administration	
	cadastre
	lodged cadastre
	private lease
	recommended settlement zone
	settlement zone
	settlement layout (SL) lot & SL-lot number
	63
Exclusion Boundary	
	drinking water source wellhead protection zone
	utility



Kandiwal Layout Plan 1 - Land Tenure

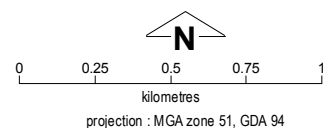
Amendment 3



This Layout Plan does not constitute development approval. It is the responsibility of the developer to ensure that all relevant consents, approvals, licences and clearances are in place prior to commencing physical works on the site. Organisations responsible for such matters may include land owner, local government, incorporated community council, native title representative body, native title prescribed body corporate, Aboriginal Cultural Materials Committee, Environmental Protection Authority, state and federal government departments, and other relevant regulatory authorities.

Go to the [PlanVA interactive planning map](#) to view Layout Plans with other spatial layers.

Layout Plan 1 endorsement	
Community	28 April 2010
Local Government	18 May 2010
Traditional Owners	-
WAPC	8 June 2010
Amendment 3 endorsement	
WAPC	17 January 2020



Base information supplied by the Western Australian Land Information Authority
SLIP 1096-2018-1. Extraction date of cadastre 29/01/2020.
Settlement layout lots are not derived from calculated dimensions.
Map document : Kandivali NP1 Amd3 - Land Tenure.mxd
Produced by Land Use Planning, Department. of Planning, Lands & Heritage,
on behalf of the Western Australian Planning Commission.
© Western Australian Planning Commission 2020

Land Tenure

crown reserve	
crown reserve	- Aboriginal Lands Trust
Department of Biodiversity, Conservation & Attractions managed	
freehold	
leasehold	
other	
pastoral lease	
pastoral lease	- Aboriginal Lands Trust
unallocated crown land	
water reserve	





Geodetic Survey Marks

- ↑ bench mark & name
- ⊙ standard survey mark & name

Land Administration

cadastre
lodged cadastre
private lease
recommended settlement zone
settlement zone
settlement layout (SL) lot

Roads

	national highway
	state highway
	major road
	minor road
	track