

Joy Springs Layout Plan 1 - Living Area

Amendment 5

This Layout Plan does not constitute development approval. It is the responsibility of the developer to ensure that all relevant consents, approvals, licences and clearances are in place prior to commencing physical works on the site. Organisations responsible for such matters may include land owner, local government, incorporated community council, native title representative body, native title prescribed body corporate, Aboriginal Cultural Materials Committee, Environmental Protection Authority, state and federal government departments, and other relevant regulatory authorities. Go to the [PlanWA interactive planning map](#) to view Layout Plans with other spatial layers.

| Layout Plan 1 endorsement |                 |
|---------------------------|-----------------|
| Community                 | 16 October 2008 |
| Local Government          | 5 December 2008 |
| Traditional Owners        | -               |
| WAPC                      | 13 January 2009 |

| Amendment 5 endorsement |              |
|-------------------------|--------------|
| WAPC                    | 26 July 2016 |

0 25 50 75 metres  
projection : MGA zone 51, GDA 94

[Joy Springs Layout Plan 1 Background Report](#)

Base information and aerial imagery supplied by the Western Australian Land Information Authority SLIP 1180-2020-1. October 2019 aerial image. Extraction date of cadastre 21/12/2020.  
Drinking water source protection area derived from the Joy Springs Drinking Water Source Protection Plan June 2016 commissioned by the Department of Planning, Lands & Heritage.  
**Settlement layout lots are not derived from calculated dimensions. Positional accuracy of aerial imagery is +/- 2 metres.**  
Map document : Joy Springs LP1 Amd5 - Living Area v4.mxd  
Produced by Land Use Planning, Department. of Planning, Lands & Heritage, on behalf of the Western Australian Planning Commission.  
© Western Australian Planning Commission 2020

| Land Use (see <a href="#">SPP 3.2 Aboriginal Settlements Guideline</a> ) |  |
|--|--|
| road reserve   | road, essential service distribution network   |
| residential  | house, residential quarters  |
| visitor camping  | camping ground, traditional law and culture  |
| community  | child care premises, civic use, corrective institution, educational establishment, health care centre, worship building                      |
| open space   | agriculture - extensive, essential service distribution network, traditional law and culture   |
| rural  | rural pursuit, agriculture - extensive, animal husbandry - intensive, agriculture - intensive, essential service distribution network        |
| recreation   | recreation, essential service distribution network   |
| pedestrian access way  | essential service distribution network, pedestrian access way  |
| drinking water source protection area                                    | any use permitted under the Drinking Water Source Protection Plan  |
| waterway   | agriculture - extensive, agriculture - intensive, traditional law and culture  |
| commercial   | art centre, caravan park, motel, office, service station, shop, tourism accommodation  |
| industrial   | fuel depot, industry, motor vehicle repair, storage, vehicle wrecking  |
| public utility   | electricity supply, essential service distribution network, drinking water supply, wastewater disposal, telecommunications, rubbish disposal |

**Features**

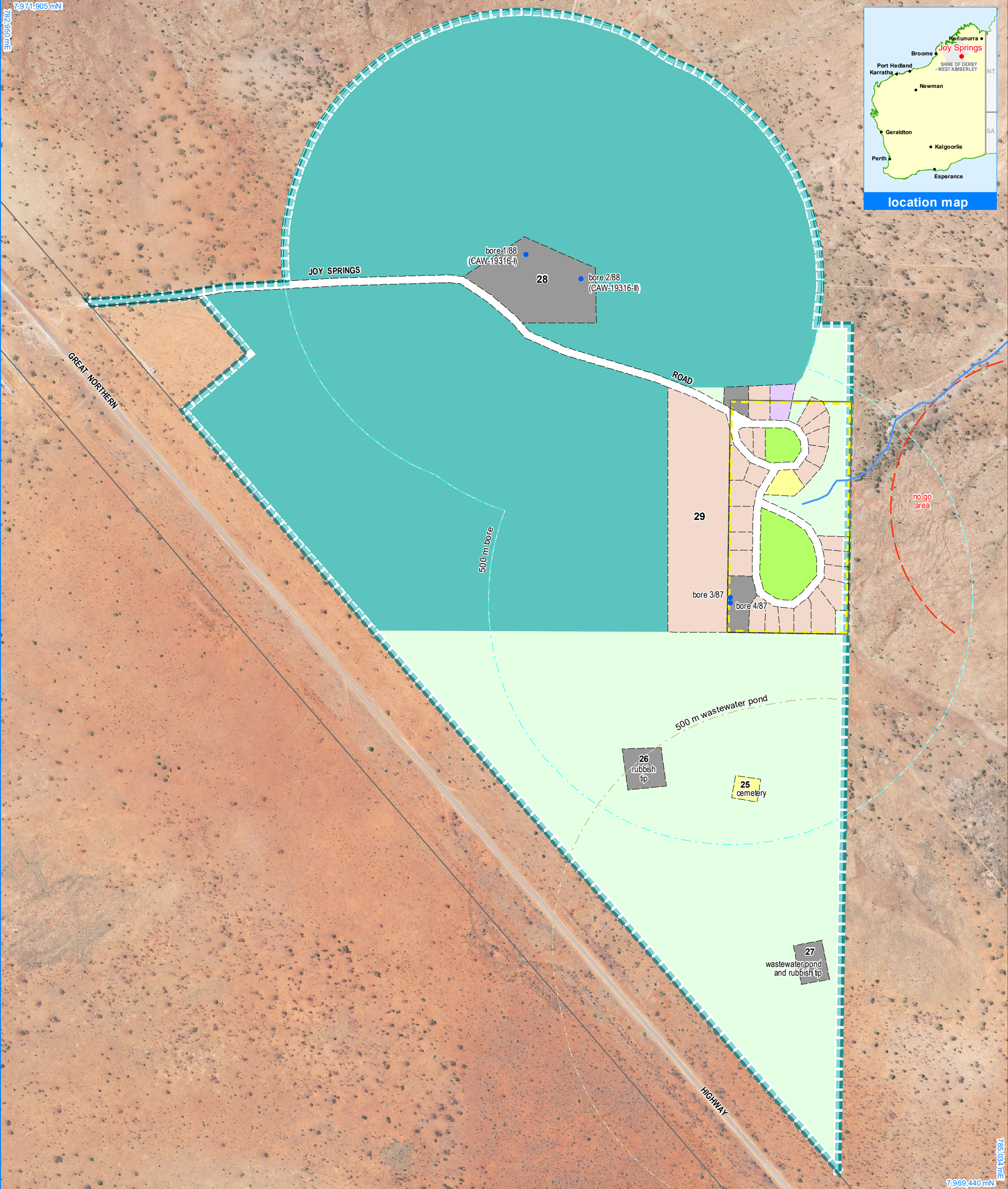
- production bore
- watercourse

**Land Administration**

- cadastre
- lodged cadastre
- private lease
- recommended settlement zone
- settlement zone
- settlement layout (SL) lot & SL-lot number

**Exclusion Boundary (see [SPP 3.2 Aboriginal Settlements Guideline](#))**

- drinking water source wellhead protection zone
- industry



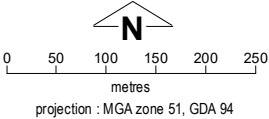
Joy Springs Layout Plan 1 - Context

Amendment 5



This Layout Plan does not constitute development approval. It is the responsibility of the developer to ensure that all relevant consents, approvals, licences and clearances are in place prior to commencing physical works on the site. Organisations responsible for such matters may include land owner, local government, incorporated community council, native title representative body, native title prescribed body corporate, Aboriginal Cultural Materials Committee, Environmental Protection Authority, state and federal government departments, and other relevant regulatory authorities. Go to the [PlanWA interactive planning map](#) to view Layout Plans with other spatial layers.

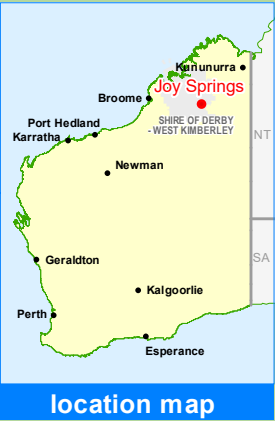
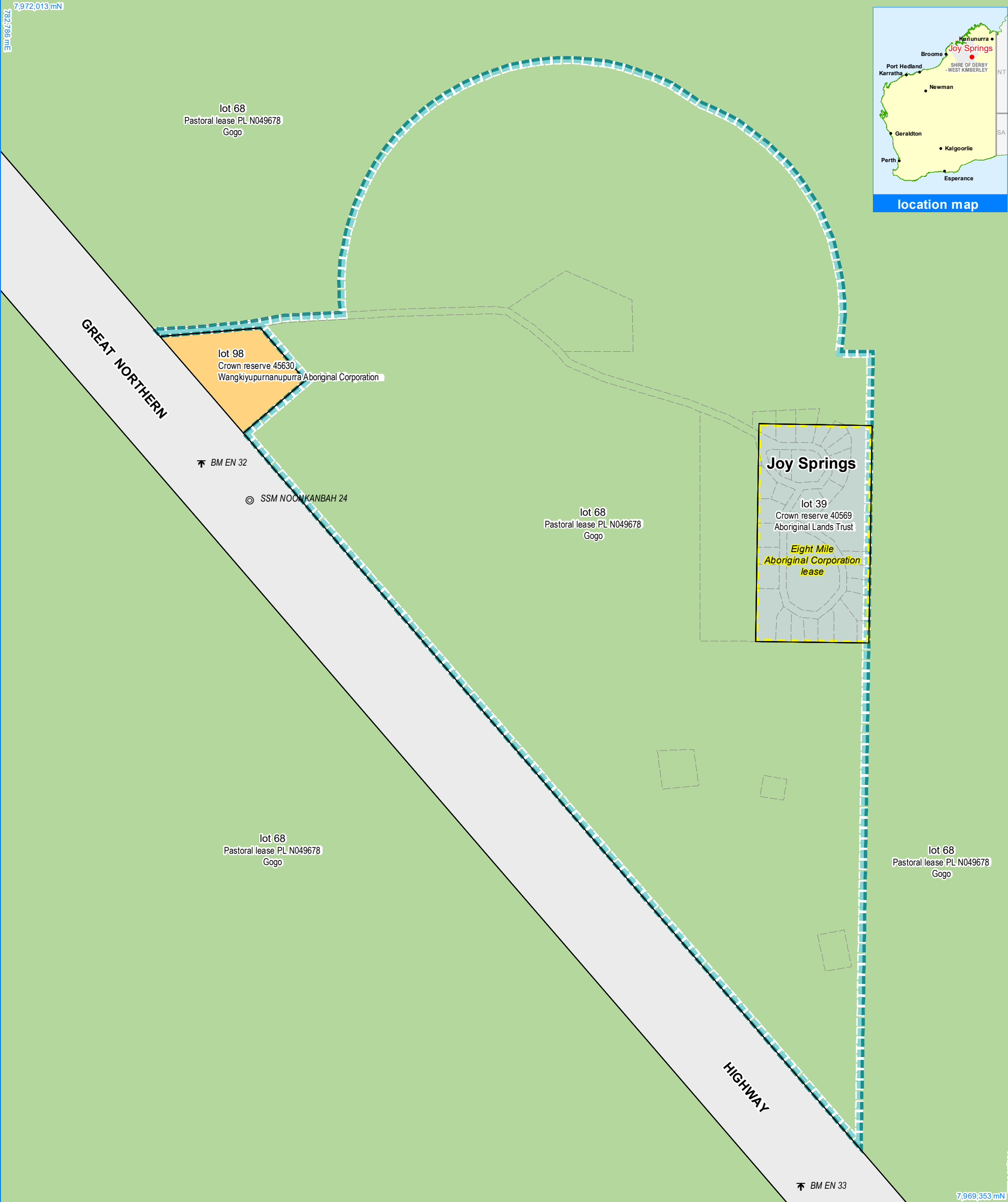
| Layout Plan 1 endorsement |                 |
|---------------------------|-----------------|
| Community                 | 16 October 2008 |
| Local Government          | 5 December 2008 |
| Traditional Owners        | -               |
| WAPC                      | 13 January 2009 |
| Amendment 5 endorsement   |                 |
| WAPC                      | 26 July 2016    |



Base information and aerial imagery supplied by the Western Australian Land Information Authority SLIP 1180-2020-1. October 2019 aerial image. Extraction date of cadastre 21/12/2020.  
Drinking water source protection area derived from the Joy Springs Drinking Water Source Protection Plan June 2016 commissioned by the Department of Planning, Lands & Heritage.  
**Settlement layout lots are not derived from calculated dimensions. Positional accuracy of aerial imagery is +/- 2 metres.**  
Map document : Joy Springs LP1 Amd5 - Context v4.mxd  
Produced by Land Use Planning, Department. of Planning, Lands & Heritage, on behalf of the Western Australian Planning Commission.  
© Western Australian Planning Commission 2020

| Land Use                              |  |
|---------------------------------------|--|
| road reserve                          | road, essential service distribution network   |
| residential                           | house, residential quarters  |
| visitor camping                       | camping ground, traditional law and culture  |
| community                             | child care premises, civic use, corrective institution, educational establishment, health care centre, worship building                      |
| open space                            | agriculture - extensive, essential service distribution network, traditional law and culture   |
| rural                                 | rural pursuit, agriculture - extensive, animal husbandry - intensive, agriculture - intensive, essential service distribution network        |
| recreation                            | recreation, essential service distribution network   |
| pedestrian access way                 | essential service distribution network, pedestrian access way  |
| drinking water source protection area | any use permitted under the Drinking Water Source Protection Plan  |
| waterway                              | agriculture - extensive, agriculture - intensive, traditional law and culture  |
| commercial                            | art centre, caravan park, motel, office, service station, shop, tourism accommodation  |
| industrial                            | fuel depot, industry, motor vehicle repair, storage, vehicle wrecking  |
| public utility                        | electricity supply, essential service distribution network, drinking water supply, wastewater disposal, telecommunications, rubbish disposal |

| Features            |  |
|---------------------|--|
|                     | production bore                                |
|                     | watercourse                                    |
| Land Administration |  |
|                     | cadastre                                       |
|                     | lodged cadastre                                |
|                     | private lease                                  |
|                     | recommended settlement zone                    |
|                     | settlement zone                                |
|                     | settlement layout (SL) lot & SL-lot number     |
| Exclusion Boundary  |  |
|                     | drinking water source wellhead protection zone |
|                     | no-go area                                     |
|                     | wastewater                                     |

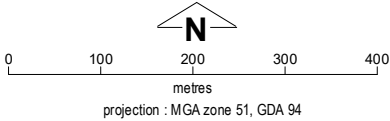


## Joy Springs Layout Plan 1 - Land Tenure Amendment 5



This Layout Plan does not constitute development approval. It is the responsibility of the developer to ensure that all relevant consents, approvals, licences and clearances are in place prior to commencing physical works on the site. Organisations responsible for such matters may include land owner, local government, incorporated community council, native title representative body, native title prescribed body corporate, Aboriginal Cultural Materials Committee, Environmental Protection Authority, state and federal government departments, and other relevant regulatory authorities. Go to the [PlanWA interactive planning map](#) to view Layout Plans with other spatial layers.

| Layout Plan 1 endorsement |                 |
|---------------------------|-----------------|
| Community                 | 16 October 2008 |
| Local Government          | 5 December 2008 |
| Traditional Owners        | -               |
| WAPC                      | 13 January 2009 |
| Amendment 5 endorsement   |                 |
| WAPC                      | 26 July 2016    |



Base information supplied by the Western Australian Land Information Authority SLIP 1180-2020-1. Extraction date of cadastre 21/12/2020. Settlement layout lots are not derived from calculated dimensions. Positional accuracy of aerial imagery is +/- 2 metres. Map document : Joy Springs LP1 Amd5 - Land Tenure v4.mxd Produced by Land Use Planning, Department of Planning, Lands & Heritage, on behalf of the Western Australian Planning Commission. © Western Australian Planning Commission 2020

### Land Tenure

|  |                          |
|--|--------------------------|
| crown reserve  |                          |
| crown reserve  | - Aboriginal Lands Trust |
| Department of Biodiversity, Conservation & Attractions managed |                          |
| freehold   |                          |
| leasehold  |                          |
| other  |                          |
| pastoral lease   |                          |
| pastoral lease   | - Aboriginal Lands Trust |
| unallocated crown land   |                          |
| water reserve  |                          |

### Geodetic Survey Marks

|   |                             |
|---|-----------------------------|
| ↑ | bench mark & name           |
| © | standard survey mark & name |

### Land Administration

|  |                             |
|--|-----------------------------|
|  | cadastre                    |
|  | lodged cadastre             |
|  | private lease               |
|  | recommended settlement zone |
|  | settlement zone             |
|  | settlement layout (SL) lot  |