

Irrunytju (Wingellina) Layout Plan 1 - Living Area

Draft Version 6



This Layout Plan does not constitute development approval. It is the responsibility of the developer to ensure that all relevant consents, approvals, licences and clearances are in place prior to commencing physical works on the site. Organisations responsible for such matters may include land owner, local government, incorporated community council, native title representative body, native title prescribed body corporate, Aboriginal Cultural Materials Committee, Environmental Protection Authority, state and federal government departments, and other relevant regulatory authorities. Go to the [PlanWA interactive planning map](#) to view Layout Plans with other spatial layers.

Layout Plan 1 endorsement

Community Local

RATIFIED DRAFT

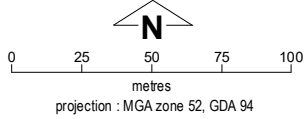
WAPC 24-September 2020

WAPC

Amendment endorsement

WAPC

-



Irrunytju Layout Plan 1 Background Report

Base information and aerial imagery supplied by the Western Australian Land Information Authority SLIP 1096-2018-1. February 2017 aerial image. Extraction date of cadastre 23/09/2020. Drinking water source protection area derived from the Wingellina (Irrunytju) Community Drinking Water Source Assessment July 2009 commissioned by the Department of Communities (Housing). Settlement layout lots are not derived from calculated dimensions. Positional accuracy of aerial imagery is +/- 2 metres. Map document : Irrunytju LP1 DV6 - Living Area E.mxd Produced by Land Use Planning, Department of Planning, Lands & Heritage, on behalf of the Western Australian Planning Commission. © Western Australian Planning Commission 2020

Land Use (see SPP 3.2 Aboriginal Settlements Guideline)	
road reserve	road, essential service distribution network
residential	house, residential quarters
visitor camping	camping ground, traditional law and culture
community	child care premises, civic use, corrective institution, educational establishment, health care centre, worship building
open space	agriculture - extensive, essential service distribution network, traditional law and culture
rural	rural pursuit, agriculture - extensive, animal husbandry - intensive, agriculture - intensive, essential service distribution network
recreation	recreation, essential service distribution network
pedestrian access way	essential service distribution network, pedestrian access way
drinking water source protection area	any use permitted under the Drinking Water Source Protection Plan
waterway	agriculture - extensive, agriculture - intensive, traditional law and culture
commercial	art centre, caravan park, motel, office, service station, shop, tourism accommodation
industrial	fuel depot, industry, motor vehicle repair, storage, vehicle wrecking
public utility	electricity supply, essential service distribution network, drinking water supply, wastewater disposal, telecommunications, rubbish disposal

Features

bore

as-constructed miscellaneous feature

Land Administration

cadastre

lodged cadastre

private lease

recommended settlement zone

settlement zone

63

settlement layout (SL) lot & SL-lot number

Exclusion Boundary (see [SPP 3.2 Aboriginal Settlements Guideline](#))

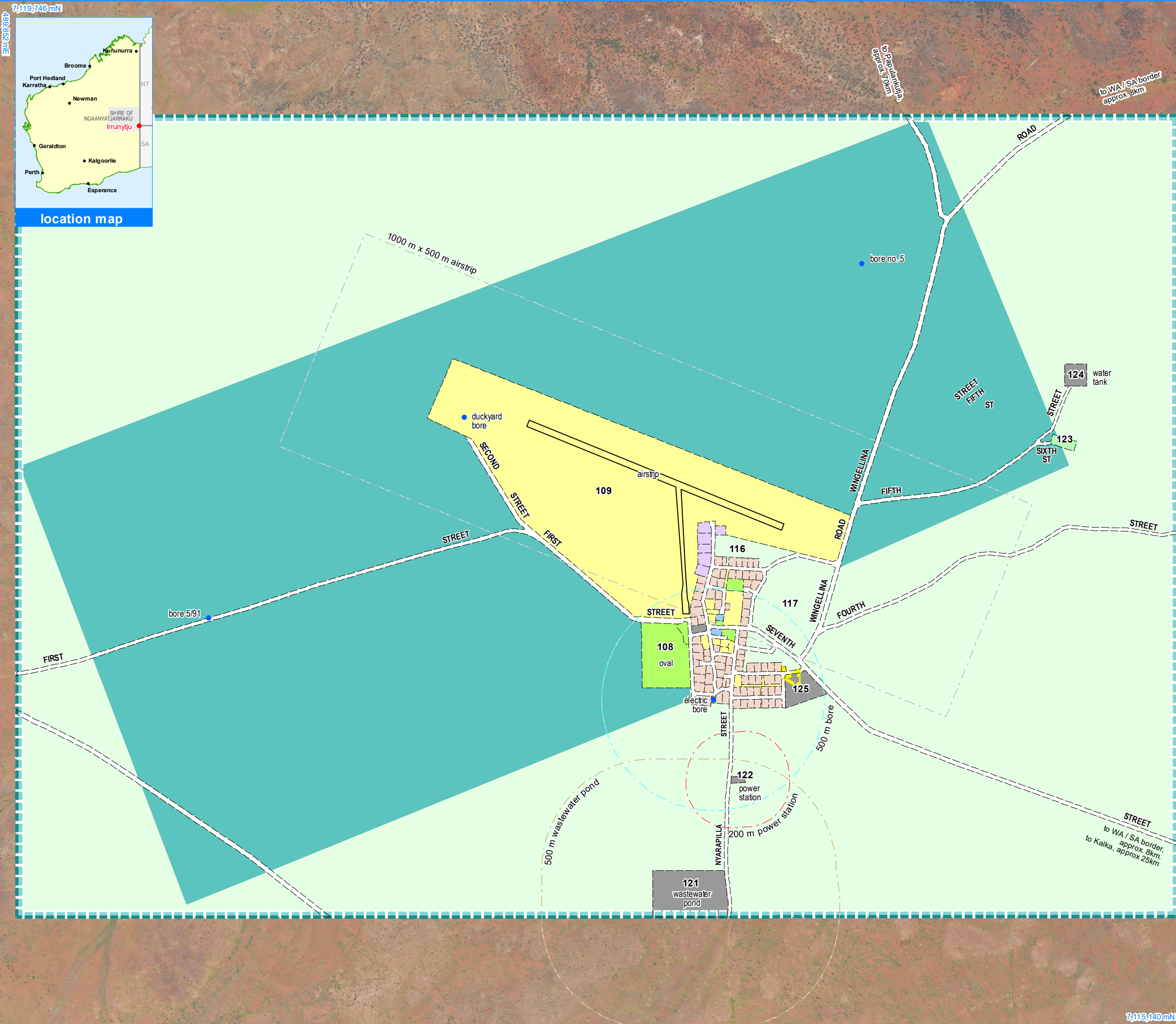
drinking water source wellhead protection zone

fuel storage

industry

utility

493,616 mE



Irrunytju (Wingellina)

Layout Plan 1

- Context

Ratified Draft 6

Features

bore

as-constructed miscellaneous feature

Land Administration

cadastre

lodged cadastre

private lease

recommended settlement zone

settlement zone

settlement layout (SL) lot & SL-lot number

63

Exclusion Boundary

drinking water source wellhead protection zone

power station

utility

wastewater

Land Use

road reserve

road, essential service distribution network

residential

house, residential quarters

visitor camping

camping ground, traditional law and culture

community

child care premises, civic use, corrective institution, educational establishment, health care centre, worship building

open space

agriculture - extensive, essential service distribution network, traditional law and culture

rural

rural pursuit, agriculture - extensive, animal husbandry - intensive, agriculture - intensive, essential service distribution network

recreation

recreation, essential service distribution network

pedestrian access way

essential service distribution network, pedestrian access way

drinking water source protection area

any use permitted under the Drinking Water Source Protection Plan

waterway

agriculture - extensive, agriculture - intensive, traditional law and culture

commercial

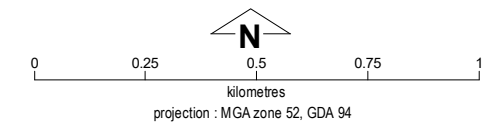
art centre, caravan park, motel, office, service station, shop, tourism accommodation

industrial

fuel depot, industry, motor vehicle repair, storage, vehicle wrecking

public utility

electricity supply, essential service distribution network, drinking water supply, wastewater disposal, telecommunications, rubbish disposal



This Layout Plan does not constitute development approval. It is the responsibility of the developer to ensure that all relevant consents, approvals, licences and clearances are in place prior to commencing physical works on the site. Organisations responsible for such matters may include land owner, local government, incorporated community council, native title representative body, native title prescribed body corporate, Aboriginal Cultural Materials Committee, Environmental Protection Authority, state and federal government departments, and other relevant regulatory authorities. Go to the [PlanWA interactive planning map](#) to view Layout Plans with other spatial layers.

Base information and aerial imagery supplied by the Western Australian Land Information Authority SLIP 1096-2018-1. Cadastre date 21/09/2020. February 2017 aerial image. Drinking water source protection area derived from the Wingellina (Irrunytju) Community Drinking Water Assessment July 2009, commissioned by the Department of Communities. **Settlement layout lots are not derived from calculated dimensions.** **Positional accuracy of aerial imagery is +/- 2 metres.** Map document: Irrunytju LP1 DV6 - Context E.mxd Produced by Land Use Planning, Department of Planning, Lands & Heritage on behalf of the Western Australian Planning Commission. © Western Australian Planning Commission 2020



Layout Plan 1 endorsement

Community Local Government

RATIFIED DRAFT

WAPC dd September 2020

WAPC

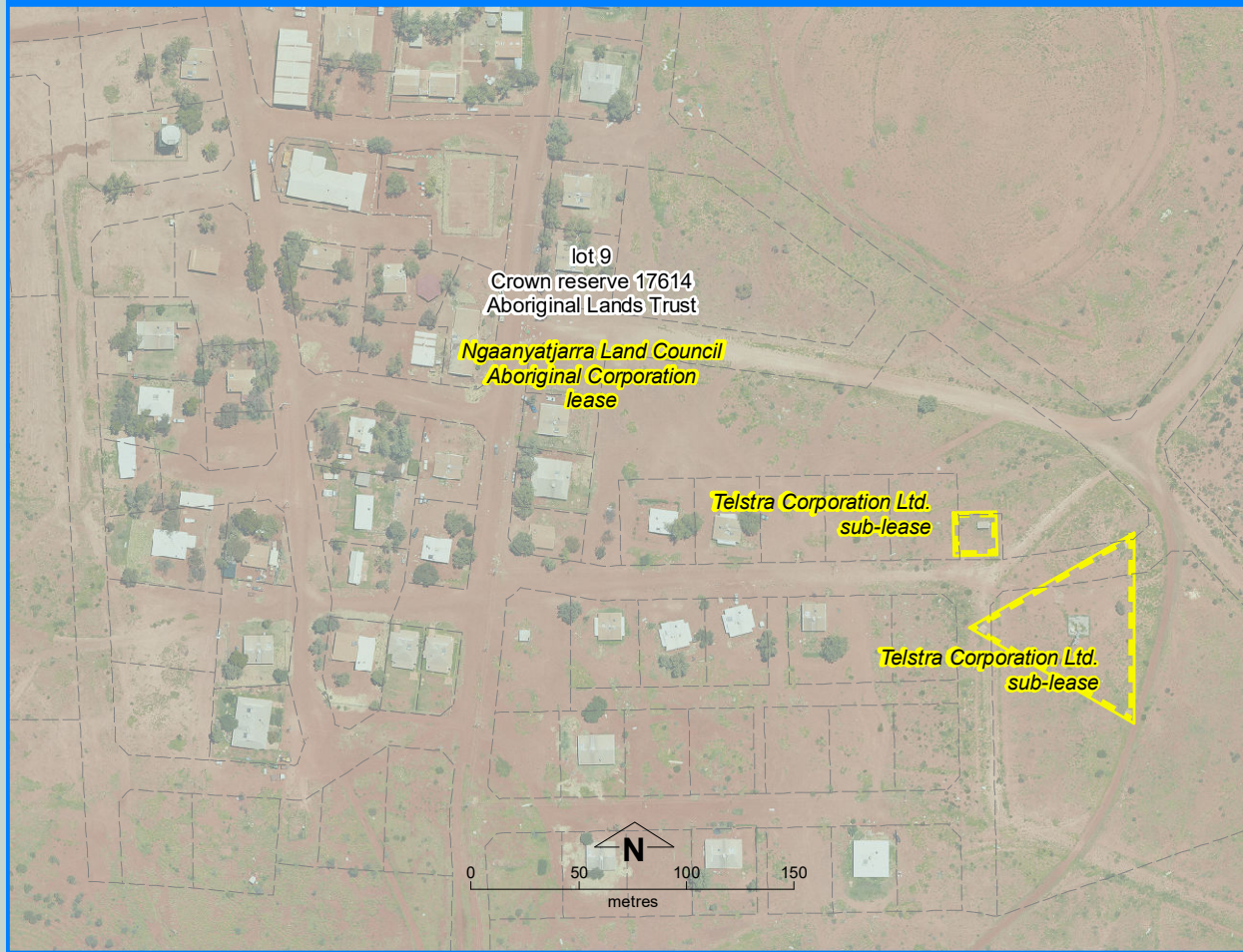
Amendment endorsement

WAPC

393,007 mE

7,190,422 mN

Irrunytju Land Tenure - closeup



Irrunytju

Road

Road

Irrunytju

Western Australia

Northern Territory

South Australia



Irrunytju (Wingellina) Layout Plan 1 - Land Tenure Ratified Draft 6

Land Tenure

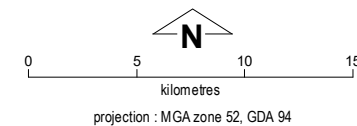
crown reserve	
crown reserve	- Aboriginal Lands Trust
Department of Biodiversity, Conservation & Attractions managed	
freehold	
leasehold	
other	
pastoral lease	
pastoral lease	- Aboriginal Lands Trust
unallocated crown land	
water reserve	

Land Administration

state/territory border	
cadastre	
lodged cadastre	
private lease	
recommended settlement zone	
settlement zone	
settlement layout (SL) lot	

Roads

national highway	
state highway	
major road	
minor road	



This Layout Plan does not constitute development approval. It is the responsibility of the developer to ensure that all relevant consents, approvals, licences and clearances are in place prior to commencing physical works on the site. Organisations responsible for such matters may include land owner, local government, incorporated community council, native title representative body, native title prescribed body corporate, Aboriginal Cultural Materials Committee, Environmental Protection Authority, state and federal government departments, and other relevant regulatory authorities. Go to the [PlanWA interactive planning map](#) to view Layout Plans with other spatial layers.

Base information & aerial image supplied by the Western Australian Land Information Authority SLIP 1096-2018-1. Cadastre date 23/09/2020. Aerial image February 2017.

Settlement layout lots are not derived from calculated dimensions.

Positional accuracy of aerial imagery is +/- 2 metres.

Map document : Irrunytju LP1 DV6 - Land Tenure E.mxd

Produced by Land Use Planning, Department of Planning, Lands & Heritage on behalf of the Western Australian Planning Commission.

© Western Australian Planning Commission 2020



Layout Plan 1 endorsement

Community

Local

WAPC

Amendment endorsement

WAPC

-

refer to
closeup
map



7,095,663 mN

503,862 mE