



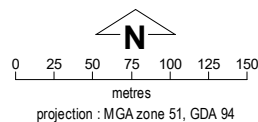
Bidyadanga Layout Plan 3 - Living Area

Amendment 11



This Layout Plan does not constitute development approval. It is the responsibility of the developer to ensure that all relevant consents, approvals, licences and clearances are in place prior to commencing physical works on the site. Organisations responsible for such matters may include land owner, local government, incorporated community council, native title representative body, native title prescribed body corporate, Aboriginal Cultural Materials Committee, Environmental Protection Authority, state and federal government departments, and other relevant regulatory authorities. Go to the [PlanWA interactive planning map](#) to view Layout Plans with other spatial layers.

Layout Plan 3 endorsement	
Community	15 November 2012
Local Government	2 June 2015
Traditional Owners	18 February 2013
WAPC	28 May 2013
Amendment 11 endorsement	
WAPC	17 July 2020



Bidyadanga Layout Plan 3 Background Report

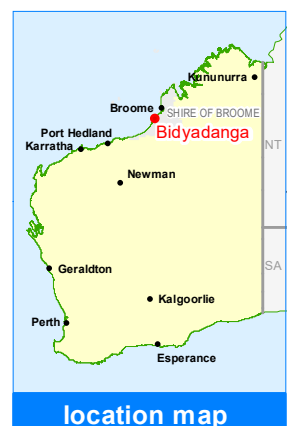
Base information and aerial imagery supplied by the Western Australian Land Information Authority SLIP 1096-2018-1. April 2019 aerial image. Extraction date of cadastre 17/07/2020. Drinking water source protection area derived from the Bidyadanga Drinking Water Source Protection Plan January 2010, commissioned by the Department of Communities (Housing). All construction and developer proponents to refer to the 'Coastal Vulnerability Assessments for Localities in the Shire of Broome - Bidyadanga Final Report. Settlement layout lots are not derived from calculated dimensions. Map document: Bidyadanga LP3 Amd11 - Living Area E.mxd Produced by Land Use Planning, Department of Planning, Lands & Heritage, on behalf of the Western Australian Planning Commission. © Western Australian Planning Commission 2020

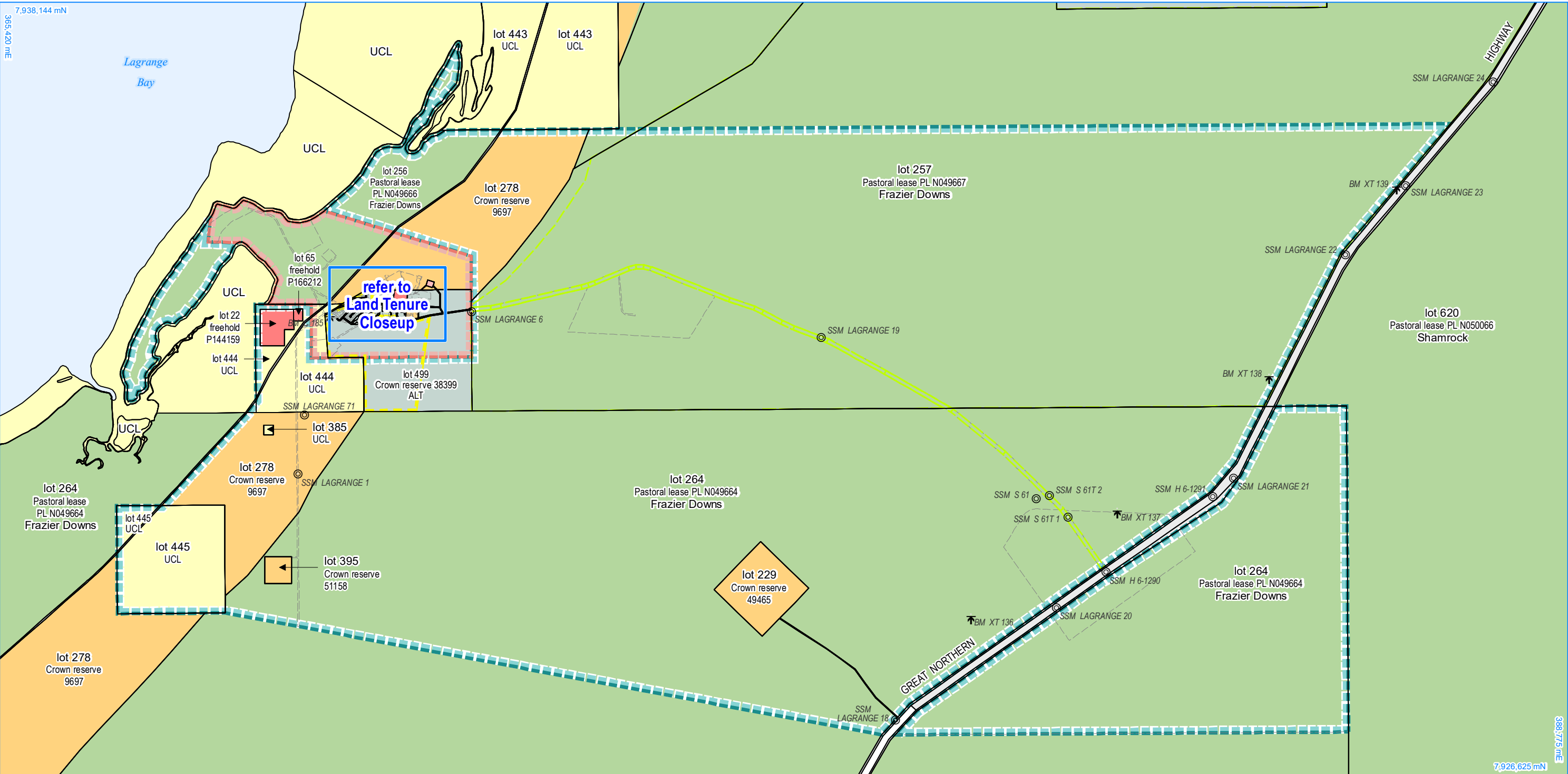
Land Use (see [Aboriginal Settlements Guideline 1](#))

road reserve	road, essential service distribution network
residential	house, residential quarters
visitor camping	camping ground, traditional law and culture
community	child care premises, civic use, corrective institution, educational establishment, health care centre, worship building
open space	agriculture - extensive, essential service distribution network, traditional law and culture
rural	rural pursuit, agriculture - extensive, animal husbandry - intensive, agriculture - intensive, essential service distribution network
recreation	recreation, essential service distribution network
pedestrian access way	essential service distribution network, pedestrian access way
drinking water source protection area	any use permitted under the Drinking Water Source Protection Plan
waterway	agriculture - extensive, agriculture - intensive, traditional law and culture
commercial	art centre, caravan park, motel, office, service station, shop, tourism accommodation
industrial	fuel depot, industry, motor vehicle repair, storage, vehicle wrecking
public utility	electricity supply, essential service distribution network, drinking water supply, wastewater disposal, telecommunications, rubbish disposal

Features

●	production bore
Land Administration	
	cadastre
	lodged cadastral
	private lease
	recommended settlement zone
	settlement zone
	settlement layout (SL) lot & SL-lot number
	63
Exclusion Boundary (see Aboriginal Settlements Guideline 3)	
	chlorine gas storage
	drinking water source wellhead protection zone
	fuel storage
	industry
	no-go area
	power station
	wastewater





Bidyadanga Layout Plan 3 - Land Tenure

Amendment 11

This Layout Plan does not constitute development approval. It is the responsibility of the developer to ensure that all relevant consents, approvals, licences and clearances are in place prior to commencing physical works on the site. Organisations responsible for such matters may include land owner, local government, incorporated community council, native title representative body, native title prescribed body corporate, Aboriginal Cultural Materials Committee, Environmental Protection Authority, state and federal government departments, and other relevant regulatory authorities. Go to the [PlanWA interactive planning map](#) to view Layout Plans with other spatial layers.

Layout Plan 3 endorsement	
Community	15 November 2012
Local Government	2 June 2015
Traditional Owners	18 February 2013
WAPC	28 May 2013
Amendment 11 endorsement	
WAPC	17 July 2020

projection : MGA zone 51, GDA 94

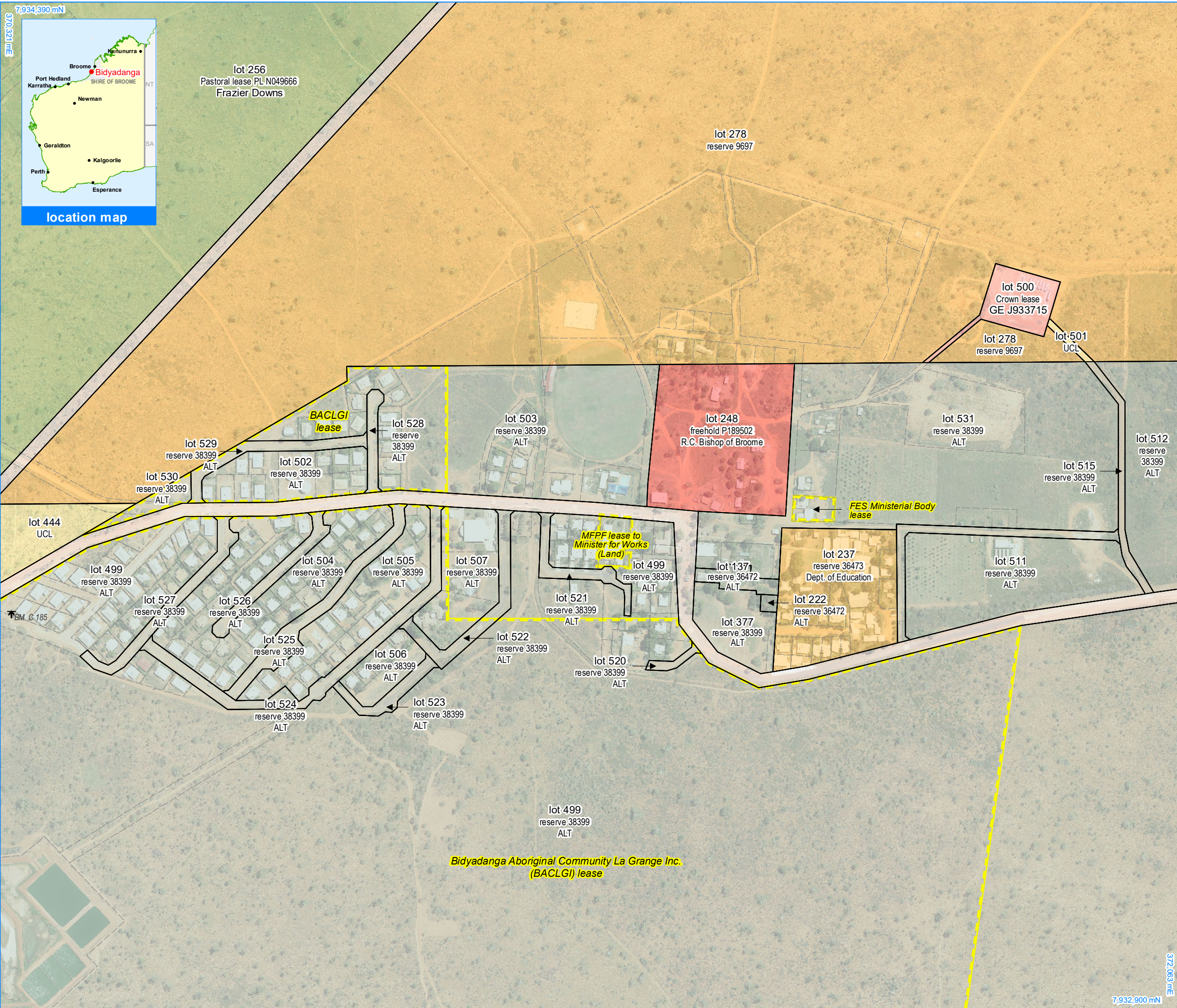
Base information supplied by the Western Australian Land Information Authority
SLIP 1096-2018-1. Cadastre date 17/07/2020
Settlement layout lots are not derived from calculated dimensions.
Map document : Bidyadanga LP3 Amd11 - Land Tenure E.mxd
Produced by Land Use Planning, Department of Planning, Lands & Heritage,
on behalf of the Western Australian Planning Commission.
© Western Australian Planning Commission 2020

Land Tenure	
crown reserve	
crown reserve	- Aboriginal Lands Trust
Department of Biodiversity, Conservation & Attractions managed	
freehold	
leasehold	
other	
pastoral lease	
pastoral lease	- Aboriginal Lands Trust
unallocated crown land	

Land Administration	
	cadastre
	lodged cadastre
	private lease
	recommended settlement zone
	settlement zone
	settlement layout (SL) lot

Geodetic Survey Marks	
	bench mark & name
	standard survey mark & name
Features	
	water body





Bidyadanga

Layout Plan 3

- Land Tenure Closeup

Amendment 11

Land Tenure

crown reserve	
crown reserve	- Aboriginal Lands Trust
Department of Biodiversity, Conservation & Attractions managed	
freehold	
leasehold	
other	
pastoral lease	
pastoral lease	- Aboriginal Lands Trust
unallocated crown land	
water reserve	

Geodetic Survey Marks

⚓	bench mark & name
⊙	standard survey mark & name

Land Administration

	cadastre
	lodged cadastre
	private lease
	recommended settlement zone
	settlement zone
	settlement layout (SL) lot

0 50 100 150 200 250 metres

projection : MGA zone 51, GDA 94

This Layout Plan does not constitute development approval. It is the responsibility of the developer to ensure that all relevant consents, approvals, licences and clearances are in place prior to commencing physical works on the site. Organisations responsible for such matters may include land owner, local government, incorporated community council, native title representative body, native title prescribed body corporate, Aboriginal Cultural Materials Committee, Environmental Protection Authority, state and federal government departments, and other relevant regulatory authorities. Go to the [PlanWA interactive planning map](#) to view Layout Plans with other spatial layers.

Base information & aerial image supplied by the Western Australian Land Information Authority SLIP 1096-2018-1. Cadastre date 17/07/2020. April 2019 aerial image. Settlement layout lots are not derived from calculated dimensions. Map document : Bidyadanga LP3 Amd11 - Land Tenure Closeup E.mxd Produced by Land Use Planning, Department of Planning, Lands & Heritage on behalf of the Western Australian Planning Commission. © Western Australian Planning Commission 2020

Layout Plan 3 endorsement	
Community	15 November 2012
Local Government	2 June 2015
Traditional Owners	18 February 2013
WAPC	28 May 2013
Amendment 11 endorsement	
WAPC	17 July 2020