



# All Paths Lead to a Home

Western Australia's 10-Year Strategy on Homelessness 2020–2030

## Where we will focus our efforts

### Vision

Everyone has a safe place to call home and is supported to achieve stable and independent lives.



### 1 Improving Aboriginal wellbeing

#### Outcomes

- Aboriginal people have safe, secure and stable housing that is culturally appropriate.
- Aboriginal communities and organisations design and deliver services primarily affecting Aboriginal people.
- Social housing policies and practices are flexible and culturally responsive.

### 2 Providing safe, secure and stable homes

#### Outcomes

- Chronic homelessness is ended.
- Diverse and appropriate housing options are available and accessible.
- Access to safe and permanent housing is the first priority for people experiencing homelessness.
- Individualised support services are available to help people maintain long term housing and achieve their goals.

### 3 Preventing homelessness

#### Outcomes

- People at risk of homelessness are supported to continue living in their homes.
- Young people at risk are identified early and connected to appropriate supports.
- People exit government services with stable housing and support.

### 4 Strengthening and coordinating our responses and impact

#### Outcomes

- Responses are flexible to accommodate individual need.
- Services are coordinated and easy to access.
- Responsibility for preventing and responding to homelessness is shared across all levels of government and the community sector.

## What are the priorities?

These priorities will guide the implementation of the strategy across all four focus areas.



### Housing First

Providing people with safe and stable housing without preconditions or judgement, including increasing low-barrier accommodation options.



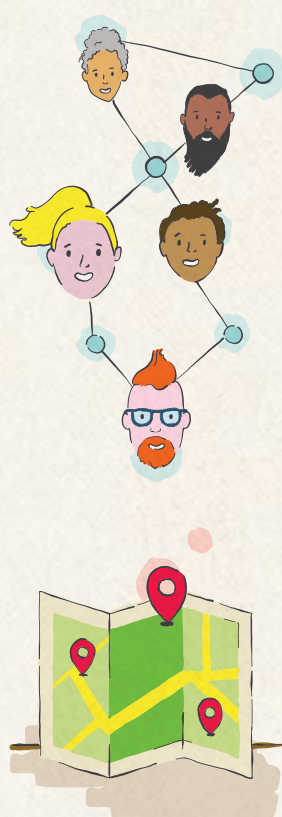
### No Wrong Door

An approach where people can get help regardless of which service or agency they connect with.



### Rough Sleeping

An immediate targeting of those who are most vulnerable – people sleeping rough.



### Whole-of-community approach

Collaborating with people with lived experience, the community services sector, business, philanthropy and government to deliver appropriate and flexible housing options and services.

### Place-based response

Developing place-based responses that are informed by local needs, context and capacity and enable local decision making.

## How we will get there

The Strategy will be implemented through two Action Plans that will move us towards our ten-year vision. These Action Plans will outline implementation and provide detail on how we will progress our priorities, including who is responsible for delivering what and by when.

### Action Plan 1 | 2020–2025

- Ending rough sleeping
- Building a No Wrong Door system
- Low barrier crisis responses
- Innovation

### Action Plan 2 | 2026–2030

- Sustaining effort
- Strong preventative responses
- Intervening earlier
- Measuring success

### Ongoing

- Evaluation and review
- Commissioning

