

Connecting 150,000 WA households to a home by 2030

Choice of homes

Western Australia is a large state, with some of the most remote communities in the world. Whatever our circumstances, a safe, stable, sustainable home is fundamental to our wellbeing.

We know that creating sustainable communities requires more than urban planning. We need to focus on social integration, inclusion and participation.

Implementation

This strategy is the way forward, delivering diverse housing solutions for WA, and committing to the broad scope of responses needed.

It will be delivered through three implementation plans:

- Affordable Housing
- Regional and Remote Housing, and
- Social Housing Framework.

The strategy will:

- ✓ Connect people to safe, stable, sustainable homes
- ✓ Improve housing choice and outcomes for WA households and communities
- ✓ Create an agile, future-oriented housing system that can respond to social and economic changes

www.communities.wa.gov.au/wahousingstrategy



Government of Western Australia
Department of Communities

Working together to improve outcomes

Housing is much more than a place to live. A well-connected home enables access to services, links to work and provides spaces for us to recreate.

Connecting more people to the right homes requires strong leadership. However, it's not a problem the WA Government alone can solve. It requires all sectors and all levels of government to make it happen.

In addition to broad outcomes under each focus area, the strategy recognises there are some groups of people that require tailored housing responses. The outcomes we are seeking for these groups include:

- **families with children** – children live in healthy, stable homes that support their development
- **young people (ages 18-25)** – young people are supported in their housing choices
- **Aboriginal people** – Aboriginal people have secure homes that enable their wellbeing
- **people with disability** – people with disability have a choice of homes to meet a range of needs, and
- **older Western Australians** – older people can age with choice in their communities.

Overview of alignment with the Outcomes Measurement Framework WA



Government of Western Australia
Department of Communities

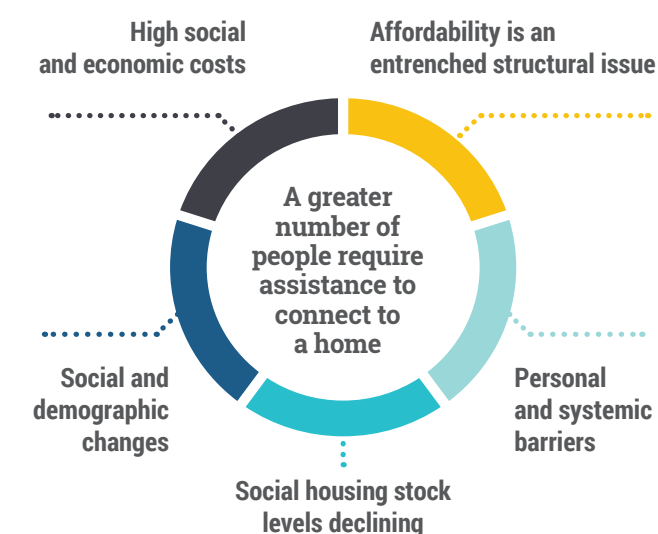
WA Housing Strategy 2020-2030



We are at a defining point

Safe, secure and stable housing is a simple human need, however accessing and maintaining a home in WA can be far from simple.

Despite significant investment in housing across all sectors, many households are unable to access a home that meets their needs. This is driven by a range of systemic and structural issues, which impact housing affordability and reduce choice. Looking forward, a greater number of people in WA will require assistance to connect to a home.



A housing system is complex and requires mutual obligation from all sectors to make it work

As our lives and our society becomes more complex, a business as usual approach will no longer support WA's housing system. The strategy acknowledges this complexity and seeks to provide a new approach.

WA Housing Strategy 2020-2030

Targets

To deliver the outcomes, we need measurable targets to track our progress and ensure we are making a positive impact in our communities. The strategy sets out key targets for each focus area.

Connecting 150,000 WA households to a home by 2030

Focus areas, outcomes and levers

The strategy focuses on five areas with an outcome for each. A number of levers will be applied to activate these outcomes.

Strategic principles

- A housing system that provides choice for every Western Australian.
- Support equity and accessibility to create an inclusive WA.
- Maintain and grow the social housing safety net.
- Person-centred, place-based and community focused.

Focus area 1: Supply

Outcome:

We have a choice of homes for people of all cultures, ages, incomes and circumstances.

Targets:

- Six per cent net increase in social housing by 2030.
 - Ensure a minimum of 20 per cent social and affordable homes in Government residential developments.
- By 2025, develop a framework and baseline standards to make approval systems consistent and efficient.
 - Deliver 70 per cent of residential land lots sold below the median price and 30 per cent in the lowest quartile in Government residential developments.

Focus area 5: Housing pathways

Outcome:

We can move homes easily when we choose or when our needs change.

Targets:

- By 2030, provide a minimum of 500 supported private rental opportunities as an alternative to social housing.
- By 2030, establish pathways and mechanisms for people to improve housing outcomes without having to change homes.



Strategically unlock and optimise land



Build capacity, capability and collaboration across our sectors



Connect people to housing information

Access

Focus area 4: Access

Outcome:

We can access homes that meet our needs.

Targets:

- By 2030, provide a minimum of 20,000 low-deposit home loans through Keystart to enable access to home ownership.
- Develop a more diverse rental sector and support 130,000 households to access a private rental home.
- In line with the national target by 2025, no people in residential aged care under the age of 65, or the age of 50 for Aboriginal people, except by choice.

Focus area 2: Design

Outcome:

Our communities and homes are designed for now and the future.

Targets:

- Grow the number of transit-oriented homes by 45 per cent, providing 150,000 new homes close to public transport.
- Catalyse 40 per cent of new homes built to liveable design standards by 2030.
- Inform consumers and incentivise industry to support 30 per cent of new WA homes built from non-conventional building materials by 2030.

METRONET

Focus area 3: Housing literacy

Outcome:

We are empowered to make housing decisions.

Targets:

- By 2025, develop a system to enable planners, developers, local government authorities and consumers to easily access housing information.
- By 2025, create a more responsive system to allow people in need to apply for housing assistance.
- By 2023, expand tenant support programs to social housing clients and people living in the private market who are eligible for social housing.

