

## Community Disability Housing Program

The Community Disability Housing Program (CDHP) is a program for people with a disability that require significant and ongoing support to live safely within the community. CDHP does not provide crisis or emergency accommodation.

Applications are generally completed and submitted by disability support providers and/or a WA government authority, such as the Department of Communities or Department of Health.

For further information on the eligibility criteria and submitting an application, please contact the CDHP team at [CDHPapplications@communities.wa.gov.au](mailto:CDHPapplications@communities.wa.gov.au)

Translating and Interpreting Service (TIS) – Telephone: 13 14 50

If you are deaf, or have a hearing or speech impairment, contact us through the National Relay Service.

For more information visit [Communications.gov.au/accesshub/nrs](http://Communications.gov.au/accesshub/nrs)

This publication is available in other formats that can be requested at any time.



Government of **Western Australia**  
Department of **Communities**

### Department of Communities offices\*

**Head office**  
5 Newman Court  
Fremantle 6160  
Tel: 1800 176 888

#### Metropolitan offices

**Armadale**  
151 Jull Street  
Armadale 6112  
Tel: (08) 6215 1212

**Cannington**  
17 Manning Road  
Cannington 6107  
Tel: (08) 6414 3111

**Fremantle**  
42 Queen Street  
Fremantle 6160  
Tel: (08) 6414 3222

**Joondalup**  
Unit 4, 7 Wise Street  
Joondalup 6027  
Tel: (08) 6215 1414

**Kwinana**  
2 Stidworthy Way  
Kwinana 6167  
Tel: (08) 6277 3877

**Mandurah**  
Unit 1, 17 Sholl Street  
Mandurah 6210  
Tel: (08) 6277 3883

**Midland**  
21 Old Great  
Northern Highway  
Midland 6056  
Tel: (08) 6277 4343

**Mirrabooka**  
5 Milldale Way  
Mirrabooka 6061  
Tel: (08) 6414 3000

**Perth City**  
605 Wellington Street  
Perth 6000  
Tel: (08) 6215 1500

**Victoria Park**  
269 Albany Highway  
Victoria Park 6100  
Tel: (08) 6414 2115

**Great Southern Albany**  
131 Aberdeen Street  
Albany 6330  
Tel: (08) 6277 4177

**Katanning**  
6 Daping Street  
Katanning 6317  
Tel: (08) 6277 4188

**South West Bunbury**  
22 Forrest Avenue  
Bunbury 6230  
Tel: (08) 6414 3204

**Busselton**  
88 Kent Street  
Busselton 6280  
Tel: (08) 6277 3666

**Manjimup**  
Unit 10,  
30-32 Rose Street  
Manjimup 6258  
Tel: (08) 6277 5008

**Goldfields Esperance**  
86B Windich Street  
Esperance 6450  
Tel: (08) 6277 3844

**Kalgoorlie**  
Unit 1-2,  
84-96 Brookman Street  
Kalgoorlie 6430  
Tel: (08) 6277 5233

**Mid West Carnarvon**  
6 Robinson Street  
Carnarvon 6701  
Tel: (08) 6414 3312

**Geraldton**  
201 Marine Terrace  
Geraldton 6530  
Tel: (08) 6414 3320

**Meekatharra**  
31 Main Street  
Meekatharra 6642  
Tel: (08) 6277 3988

**Pilbara Karratha**  
The Quarter HQ  
Level 2,  
20 Sharpe Avenue  
Karratha 6714  
Tel: (08) 6414 3333

**South Hedland**  
Cnr Brand and  
Tonkin Streets  
South Hedland 6722  
Tel: (08) 6277 5044

**West Kimberley Broome**  
30 Frederick Street  
Broome 6725  
Tel: (08) 6277 3833

**Derby**  
West Kimberley House  
16-22 Loch Street  
Derby 6728  
Tel: (08) 6277 3880

**East Kimberley Halls Creek**  
14A Terone Street  
Halls Creek 6770  
Tel: (08) 6277 3811

**Kununurra**  
16 Coolibah Drive  
Kununurra 6743  
Tel: (08) 6215 1501

**Wheatbelt Merredin**  
27 Mitchell Street  
Merredin 6415  
Tel: (08) 6414 2981

**Narrogin**  
11-13 Park Street  
Narrogin 6312  
Tel: (08) 6414 2979

**Northam**  
5 Elizabeth Place  
Northam 6401  
Tel: (08) 6414 3230

\* For housing related matters

[communities.wa.gov.au](http://communities.wa.gov.au)

# Housing options for people with disability



SD110 0623



## Who is eligible

The Department of Communities defines a disability as being:

- a) attributable to an intellectual, psychiatric, cognitive, neurological, sensory or physical impairment or combination of those impairments; and
- b) is permanent or likely to be permanent; and
- c) may or may not be of a chronic or episodic nature; and
- d) results in (i) substantially reduced capacity of the person for communication, social interaction, learning or mobility; and (ii) a need for continuing support.

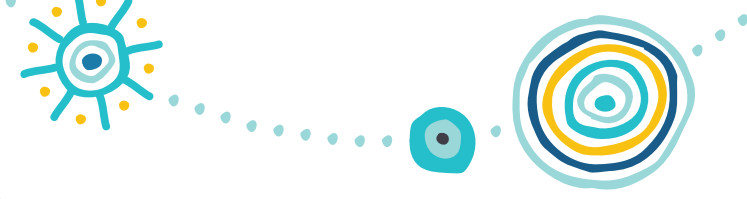
The supporting evidence you provide will assist us in determining your housing requirements. In recognition of the additional costs that people with disabilities face, we will assess you based on our income limits for people with disabilities.

## Rental accommodation

We can assist with accommodation by allocating or modifying an existing public housing property. In some instances, where the modifications are extensive, we may allocate a purpose-built property.

Applicants can also apply for a bond assistance loan to assist with private rental accommodation. If you are already a tenant of ours, please contact your Housing Services Officer to discuss your housing needs.

If required we can arrange for an Occupational Therapist to determine what modifications are needed in your home.



## Home ownership

We have a home loan scheme aimed at assisting people with disabilities to buy or build their own home, or modify an existing home to cater for their needs.

People on disability support benefits and their carers who are in receipt of a Centrelink payment can apply for this loan. This loan program can also assist people with disabilities to refinance mortgages where income has been reduced permanently because of a disability.

For further information please contact Keystart on **1300 578 278** or visit the website at **keystart.com.au**.



The Department of Communities offers a range of housing options to help people with disabilities access appropriate and affordable housing.

This includes singles, couples, families, people who wish to share and people who need to live with a carer.

Options include:

- mainstream rental housing:
  - modifications to make housing more accessible
  - purpose-built accommodation
- community housing
- home loans to purchase, build or modify private homes
- bond assistance loans to access private rental accommodation.

